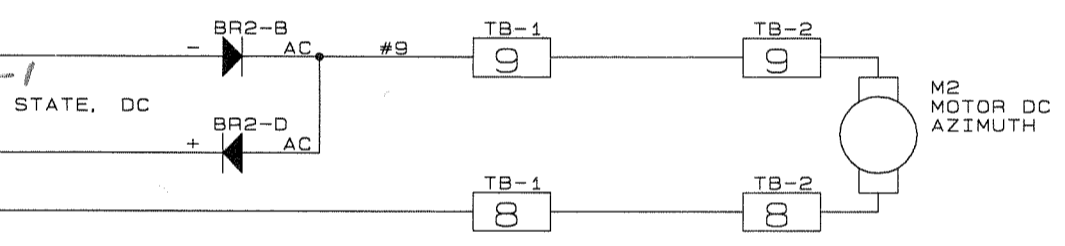
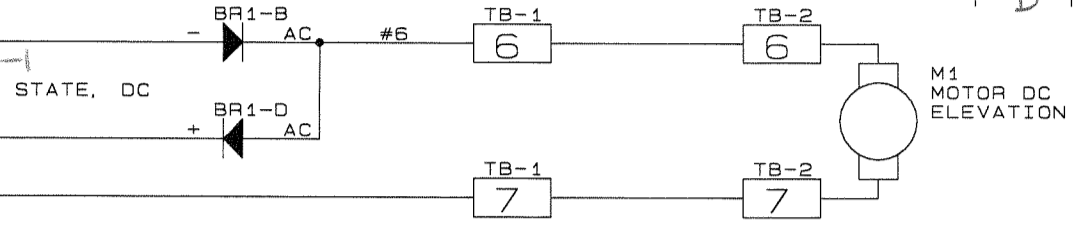


REV	DATE	ZONE	DESCRIPTION	BY	APPROVED
A	6/11/90	ALL	Created sheet.	PK	
B	7/19/90	A7	Corrected fog nozzle wire numbers.	PK	
B	7/19/90	A7	Added 12 tap to terminal #13	PK	
C	11/19/93	ALL	Increased to "C" size.	PK	
C	11/19/93	B-C4	Swapped wires 8 and 9.	PK	
C	11/19/93	D6	Added POWER ON lamp.	PK	
D	5-12-1999		ADDED OVERCURRENT PROTECTORS, CHANGED SSR-1 & SSR-2	RW	



NOTES

- 1 Input power can be 12 or 24 volts. ~~Change POWER ON lamp and motors when changing voltages.~~
- 2 TB1 is located on circuit board. TB2 is located in monitor J-box (at base of monitor).

FOG NOZZLE OPTION

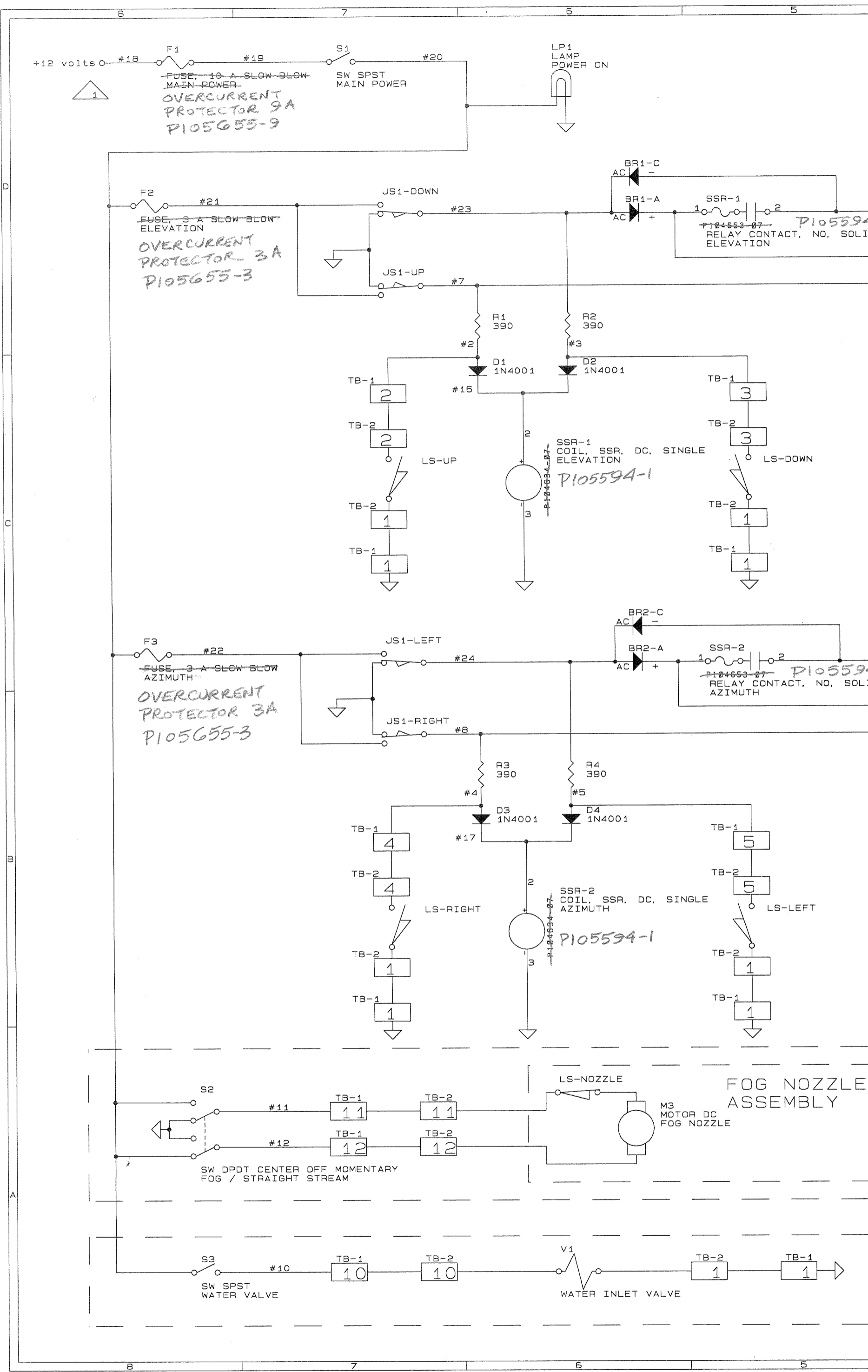
WATER VALVE OPTION

NEW ISSUE  
5-12-1999  
 DATE  
 DESTROY ALL  
 OBSOLETE PRINTS

The information and design disclosed herein is the property of GST Industries Inc. All proprietary, use and sales rights thereto are reserved. This disclosure is confidential and must not be copied in whole or part.

© GST INDUSTRIES, INC. 1993

Stang Industrial Products 3601 W. Central Ave. Santa Ana, Ca. 92704 Voice: (714) 556-0222 FAX : (714) 546-8017	
Title	Electrical Schematic -- 2-1/2" DC 12V
Size	Document Number C104628-2
Date:	November 19, 1993 Sheet 1 of 1



**FOG NOZZLE ASSEMBLY**

M3 MOTOR DC FOG NOZZLE

SW DPDT CENTER OFF MOMENTARY FOG / STRAIGHT STREAM

SW SPST WATER VALVE

WATER INLET VALVE