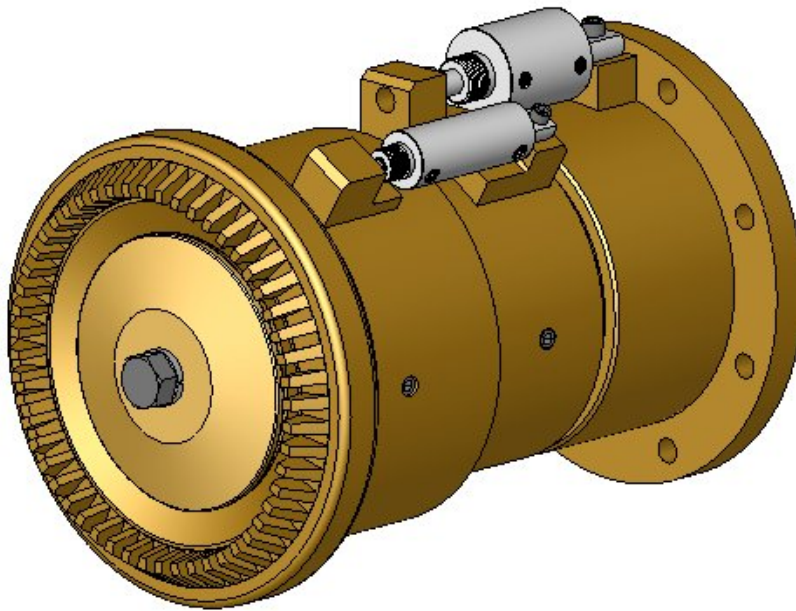




Stang Industrial Products

Operation and Maintenance & Installation Manual



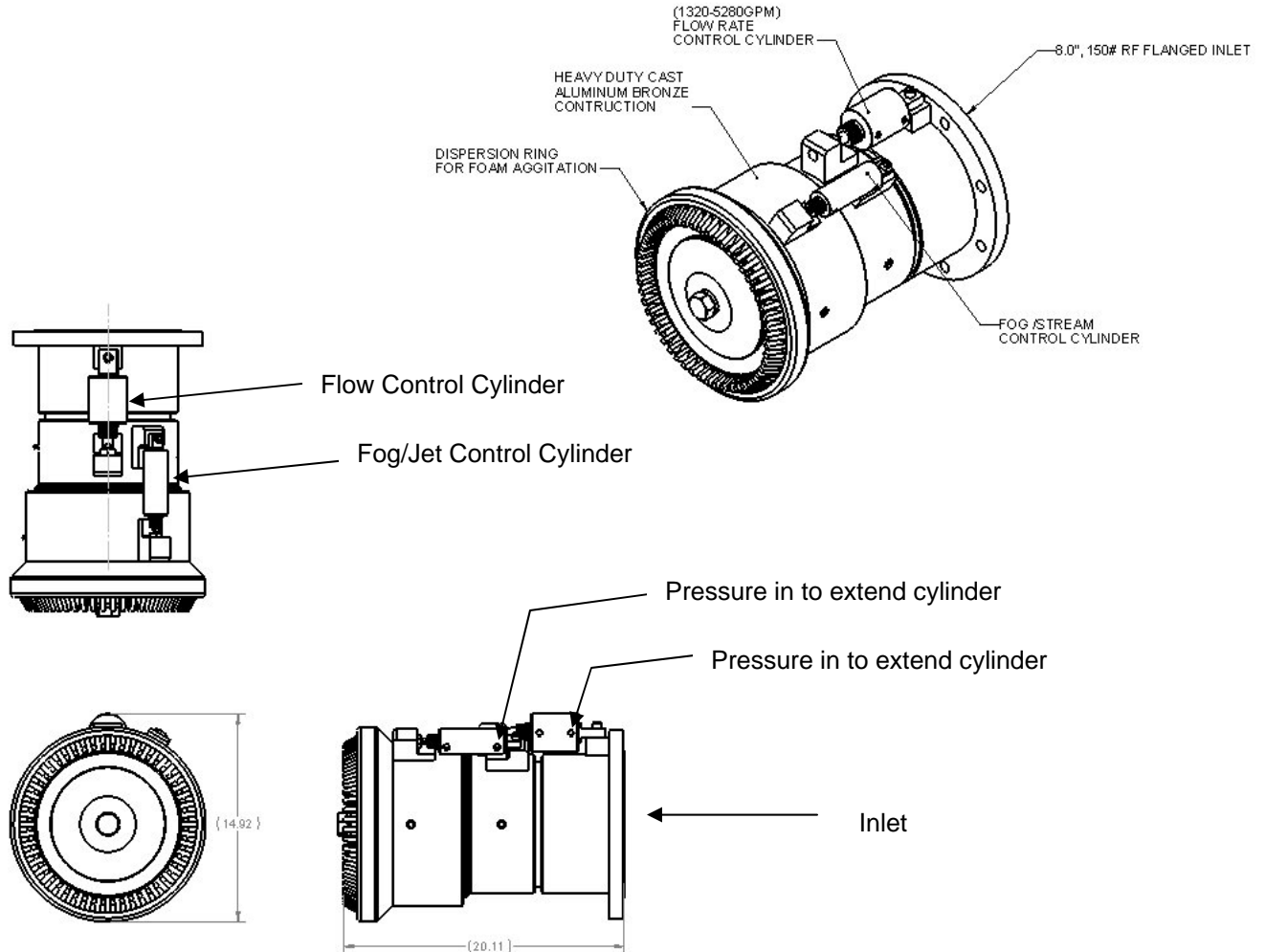
Stang 8.00" Variable Flow Hydraulic Fog Nozzle Model # 260415-11

1250 Railroad St.
Corona, Ca 92882 USA
www.stangindustrial.com

05/2006

1. Introduction

The Stang 8.00" Variable Flow Fog Nozzle is capable of a fog spray or straight stream. The flow is also adjustable from 1320-5280gpm, 300-1200m³/hr. The nozzle inlet is an 8.00" 150# ANSI flange.



2. Specifications

Water:

Flow Rate:	1320-5280gpm. (variable) 300m ³ /hr. – 1200m ³ /hr.
Pressure Range:	150-200psi
Optimum Pressure:	175psi
Max fog angle:	120°

Materials:

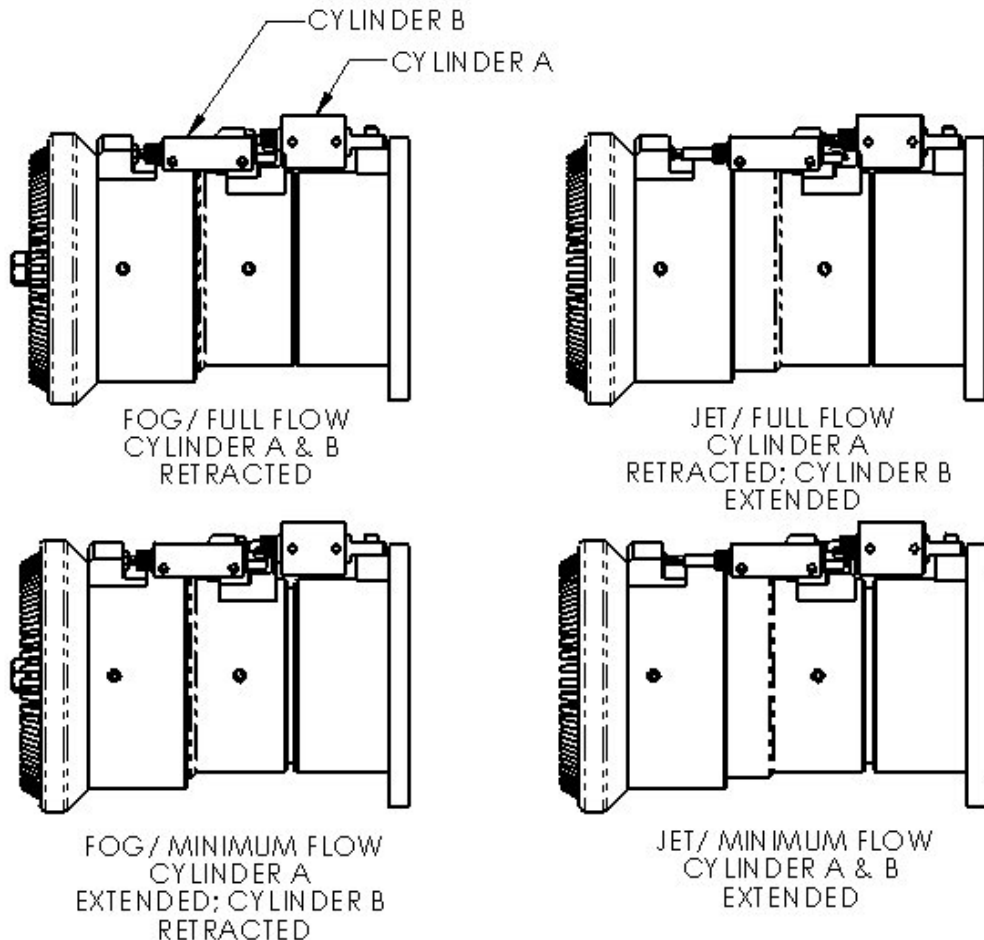
Inlet/Body/Outer: Al-Brz(C95400)
Swivel: Al-Brz(C95400)
Poppet: Al-Brz(C95400)
Hydraulic Cylinders: 316 SS

Unit Weight: 280lbs. (127Kg)

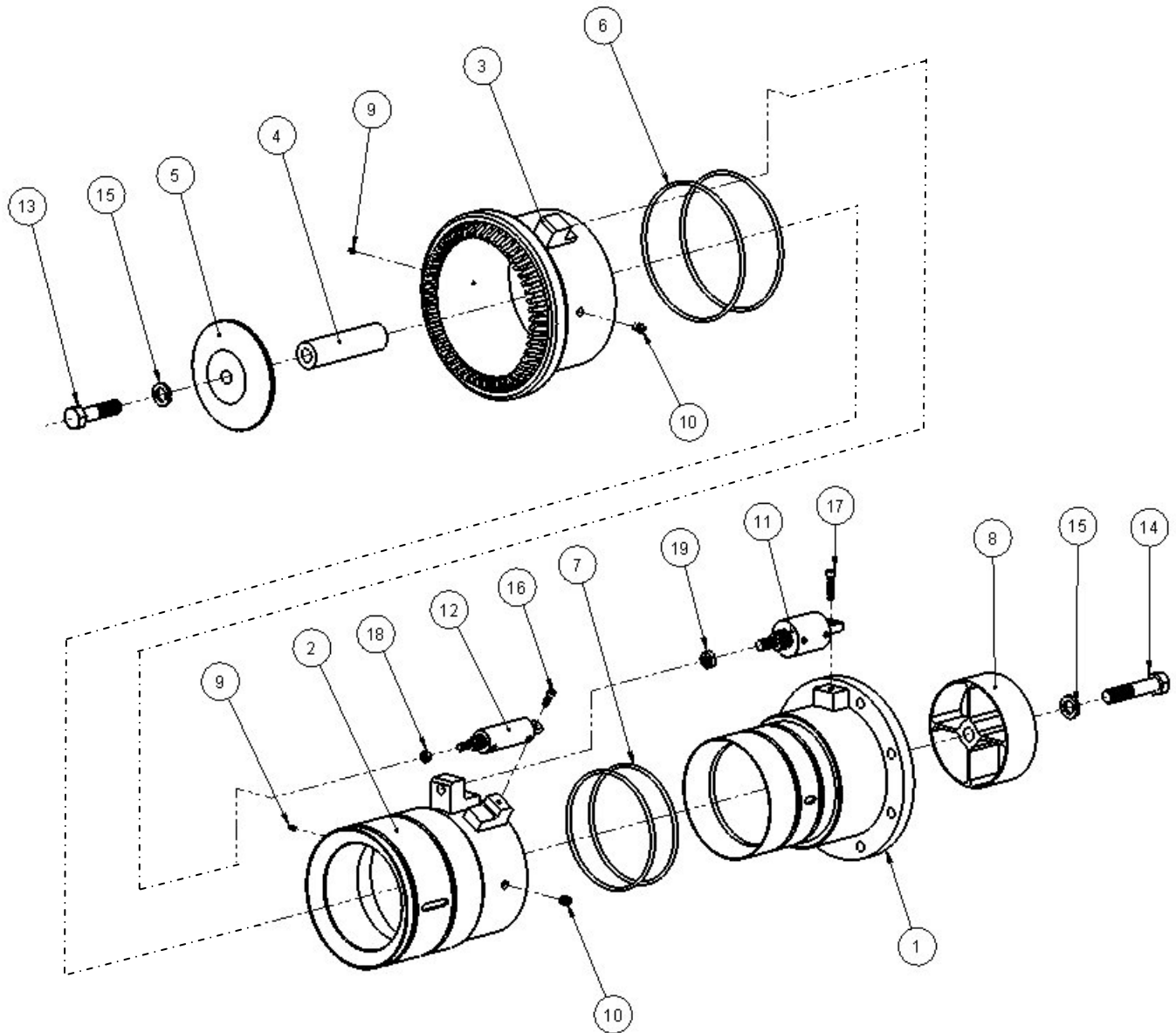
3. Hydraulics.

Each Hydraulic Cylinder is operated by an independent Hydraulic Power Unit Reversible Auto pack; Stang Model No.777200-1. Both units are mounted inside a control box fixed to the fire monitor. Please refer to manual No.777200-1 for details on electrical connections, hydraulic oil, start up procedures, priming and pressure setting.

Nozzles are tested with Hydraulic Power Unit before leaving the factory.



4. Exploded Drawing



1	19	102980-8C	NUT, JAM, 3/4-10UNC, 18-8
1	18	102980-5C	NUT, JAM, 1/2-13UNC, 18-8
1	17	104039-175C	SCREW, SHC, 7/16-14UNC X 1.75L, 18-8
1	16	104036-100C	SCREW, SHC, 3/8-16UNC X 1.00L, 18-8
2	15	103109-2C	WASHER, LOCK, SPLIT, 1.00" NOM, 18-8
1	14	102480-500C	BOLT, HH, 1/8UNC X 5.00L, 18-8
1	13	102480-400C	BOLT, HH, 1/8UNC X 4.00L, 18-8
1	12	100432-29	CYLINDER, 1.50BX2.00S DOUBLE ACT, SS
1	11	100432-28	CYLINDER, 2.50BX.450S DOUBLE ACT, SS
2	10	260420-7	GUIDE SCREW, 5/8-18UNF
2	9	100112-8	FITTING, ZERK, STR, 1/4-28UNF, CRES
1	8	260421-1	CROSS SUPPORT, 8.00" VF FOG NOZZLE-AB
2	7	100128-446	O-RING, 8.500ID X .275Cs, BUNA-N
2	6	100128-449	O-RING, 9.975ID X .275Cs, BUNA-N
1	5	260420-4	POPPET, 8.00" VF NOZZLE-AB
1	4	260420-5	SPACER, POPPET, 8.00" VF NOZZLE-AB
1	3	260420-23	BODY, 8.00" VF NOZZLE OUTER W/MOUNTS-AB
1	2	260420-22	BODY, 8.00" VF NOZZLE CENTER W/MOUNTS-AB
1	1	260424-1	BODY, 8.00" VF NOZZLE INLET W/MOUNTS-AB
QTY	ITEM NO.	PART NUMBER	DESCRIPTION

5. Installation

Nozzle is mounted to Fire Monitor using 8- 3/4" -10 UNC Bolts X 3.5" long with plain washer(8) and lock washer(8); SS 304 Grade 5. 8" ANSI gasket is fitted between raised faces. All items supplied.

Connect Hydraulic Hoses to Cylinders, two hoses from each Auto pack to each cylinder. Follow 'start up' procedures as out-lined in manual no.777200-1.

6. Maintenance

Routine Flange Bolts for tightness.

Grease once every three months using quality lithium or molybdenum grease, once a month during heavy use.

Check for any obstruction inside nozzle.

We recommend that when Fire Monitor is in "Park" and not in service that the Nozzle Cylinders are retracted i.e. in 'Fog-Minimum Flow" position for Foam.