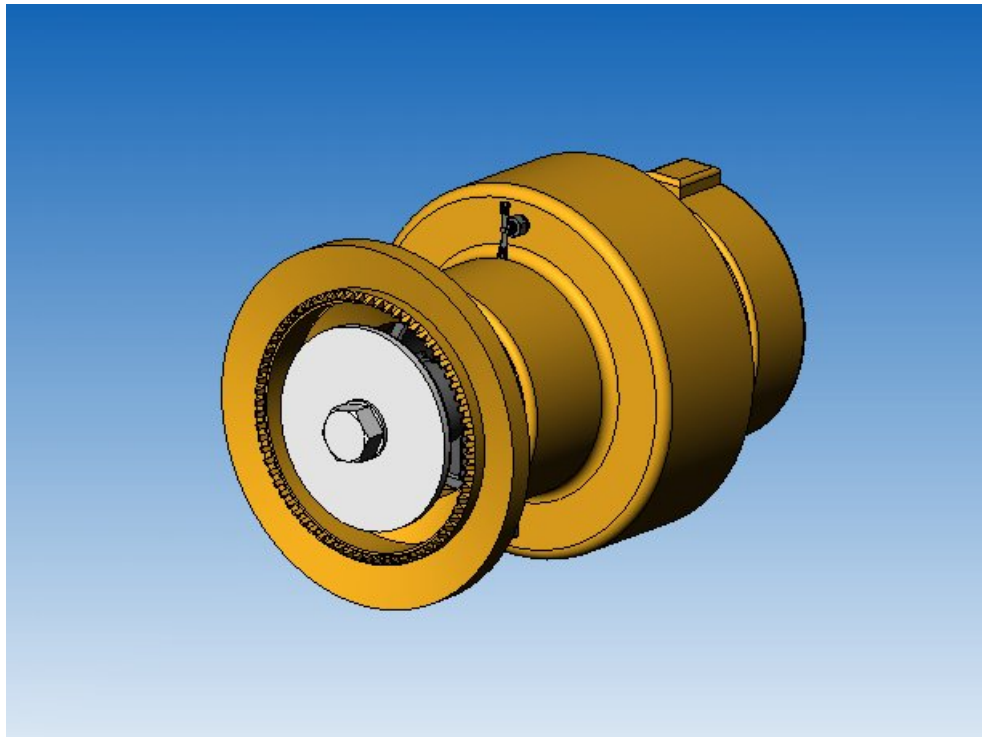




Stang Industrial Products

Operation and Maintenance & Installation Manual



Stang 4.00" Hydraulic Fog Nozzle Model # 101176

1250 Railroad St.
Corona, Ca 92882 USA
www.stangindustrial.com

04/2006

1. Introduction

The Stang 4.00" Fog Nozzle comes in various different configurations. There are three different finishes available which include "As Cast", "Polished", & "Chromed". The nozzle is also available with various flow rates from 1000gpm to 3000gpm all @ 100psi. The nozzle inlet is always 4.00-NH thread.

2. Hydraulic Oil Information

Use oil such as Shell Tellus plus 32

3. Hydraulic Technical

Hydraulic fluid required for full stroke is 32.913 cubic inches. .14 gal/stroke reference volume will vary with the addition of part # 103201

Hydraulic operation: recommended working pressure-250-400psi, max pressure is 500psi

4. Hydraulic Connections

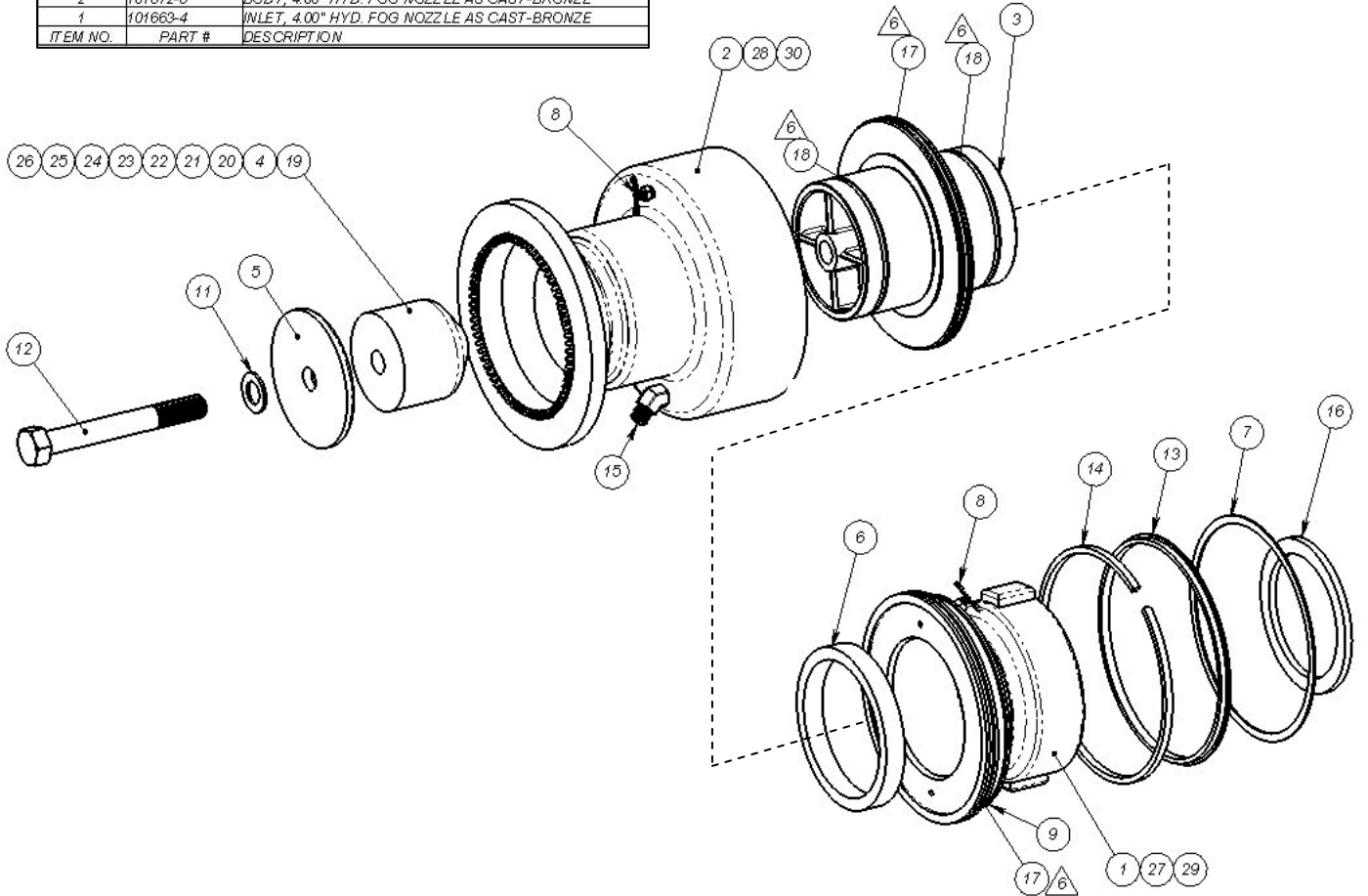
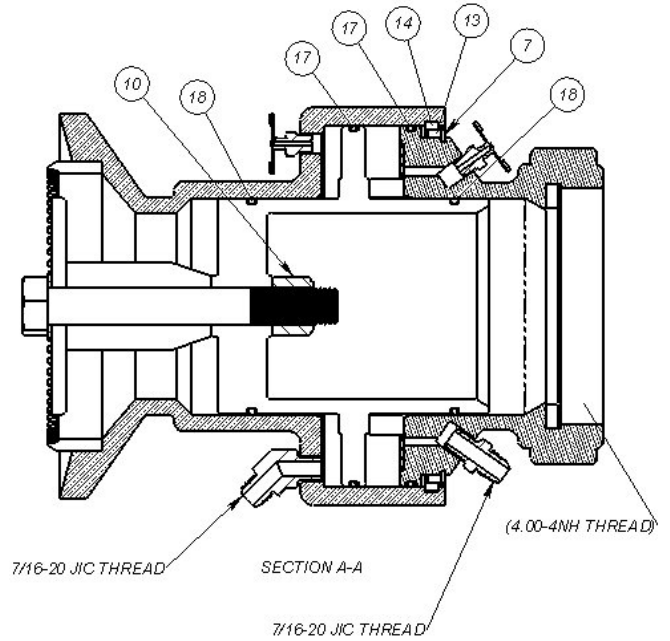
Incoming hydraulic connections are 7/16 male JIC fittings.

5. Nozzle Bleeding

- Make sure control valve is operational and the system has fluid
- Make sure that the nozzle is installed such that the petcock valves are upward.
- Open both petcock valves.
- Slowly apply fluid to the nozzle by moving the joystick/control lever. Fluid should start coming out of one petcock. As soon as it comes out of that petcock close it.
- Now do the same in reverse and as soon as the fluid comes out of the other petcock close it.
- Nozzle should now be bled. Repeat if required.

6. Exploded Drawing

30	101672-5	BODY, 4.00" HYD. FOG NOZZLE CHROMED-BRONZE
29	101663-3	INLET, 4.00" HYD. FOG NOZZLE CHROMED-BRONZE
28	101672-4	BODY, 4.00" HYD. FOG NOZZLE POLISHED-BRONZE
27	101663-2	INLET, 4.00" HYD. FOG NOZZLE POLISHED-BRONZE
26	101673-1	SLEEVE, FLOW, 3000 GPM @100PSI
25	101673-2	SLEEVE, FLOW, 2750 GPM @100PSI
24	101673-3	SLEEVE, FLOW, 2500 GPM @100PSI
23	101673-4	SLEEVE, FLOW, 2250 GPM @100PSI
22	101673-5	SLEEVE, FLOW, 2000 GPM @100PSI
21	101673-6	SLEEVE, FLOW, 1750 GPM @100PSI
20	101673-7	SLEEVE, FLOW, 1500 GPM @100PSI
19	101673-9	SLEEVE, FLOW, 1200 GPM @100PSI
18	100128-244	O-RING, AS568A-244, 4.250ID X .139Cs, BUNA-N
17	100128-263	O-RING, AS568A-263, 7.250ID X .139Cs, BUNA-N
16	100275-10	GASKET, 4.0" NOM., NEOP A60-70,MFN G22
15	101746-2	FITTING, 45°, 1/4-18(M)NPT - 7/16-20JIC(M) BRASS
14	104292-1	RING, RETAINING, .188SQ 4.00" FOG NOZZLE
13	104291-1	RING, KEEPER/RETAINER, 4.00" FOG NOZZLE
12	102478-600C	BOLT, HH, 3/4-10UNC X 6.00L, 18-8
11	101715-75C	WASHER, FLAT, .765ID X 1.31OD X .063T, 18-8
10	100249-13C	NUT, NYLOCK, 3/4-10UNC, 18-8
9	101816-7	FITTING, STR, 1/4-18(M)NPT - 7/16-20JIC(M) BRASS
8	100235-4	VALVE, PETCOCK, .125-27NPT, MFN, #135
7	100452-8	RING, INT. RETAINING, 7.00 DIA SPIROLOX, SS
6	103201-4	SPACER, FOG NOZZLE SHIM, 5.32OD X 4.52ID X .70L-STL
5	101670-1	POPPET, NSO, 4.00" FOG NOZZLE
4	101673-11	SLEEVE, FLOW, 1000 GPM @100PSI
3	101664-2	PISTON, 4.00" FOG NOZZLE-BRONZE
2	101672-6	BODY, 4.00" HYD. FOG NOZZLE AS CAST-BRONZE
1	101663-4	INLET, 4.00" HYD. FOG NOZZLE AS CAST-BRONZE
ITEM NO.	PART #	DESCRIPTION



Disclaimer: This advice is given in good faith but not without liability