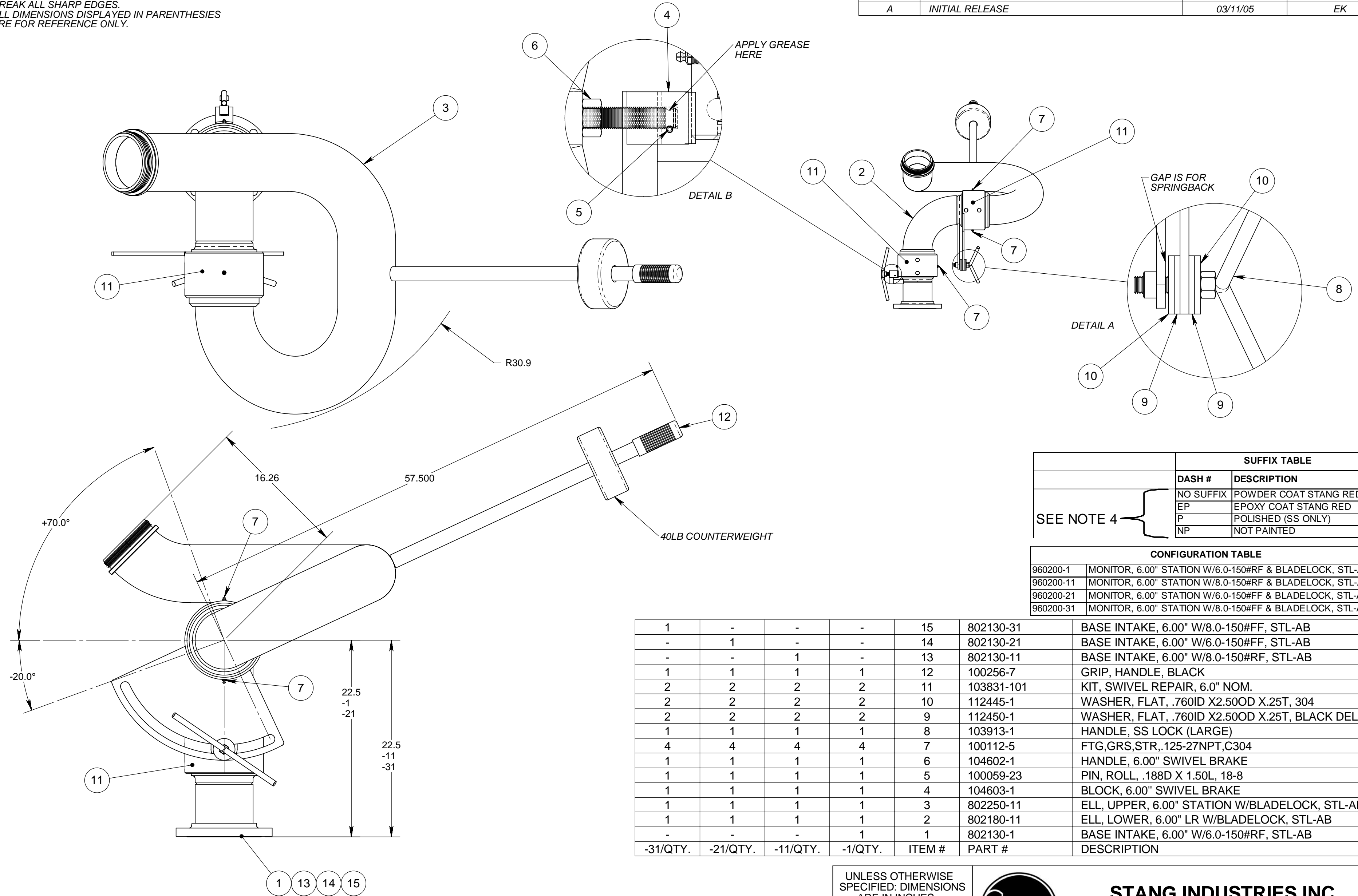


- NOTES:
 1. DO NOT SCALE THIS DRAWING.
 2. BREAK ALL SHARP EDGES.
 3. ALL DIMENSIONS DISPLAYED IN PARENTHESES ARE FOR REFERENCE ONLY.

REVISIONS			
REV.	DESCRIPTION	DATE	BY
A	INITIAL RELEASE	03/11/05	EK



SUFFIX TABLE	
DASH #	DESCRIPTION
NO SUFFIX	POWDER COAT STANG RED
EP	EPOXY COAT STANG RED
P	POLISHED (SS ONLY)
NP	NOT PAINTED

CONFIGURATION TABLE	
960200-1	MONITOR, 6.00" STATION W/6.0-150#RF & BLADELOCK, STL-AB
960200-11	MONITOR, 6.00" STATION W/8.0-150#RF & BLADELOCK, STL-AB
960200-21	MONITOR, 6.00" STATION W/6.0-150#FF & BLADELOCK, STL-AB
960200-31	MONITOR, 6.00" STATION W/8.0-150#FF & BLADELOCK, STL-AB

ITEM #	PART #	DESCRIPTION
1	802130-31	BASE INTAKE, 6.00" W/8.0-150#FF, STL-AB
-	802130-21	BASE INTAKE, 6.00" W/6.0-150#FF, STL-AB
-	802130-11	BASE INTAKE, 6.00" W/8.0-150#RF, STL-AB
1	100256-7	GRIP, HANDLE, BLACK
2	103831-101	KIT, SWIVEL REPAIR, 6.0" NOM.
2	112445-1	WASHER, FLAT, .760ID X2.50OD X.25T, 304
2	112450-1	WASHER, FLAT, .760ID X2.50OD X.25T, BLACK DELRIN
1	103913-1	HANDLE, SS LOCK (LARGE)
4	100112-5	FTG,GRS,STR,.125-27NPT,C304
1	104602-1	HANDLE, 6.00" SWIVEL BRAKE
1	100059-23	PIN, ROLL, .188D X 1.50L, 18-8
1	104603-1	BLOCK, 6.00" SWIVEL BRAKE
1	802250-11	ELL, UPPER, 6.00" STATION W/BLADELOCK, STL-AB
1	802180-11	ELL, LOWER, 6.00" LR W/BLADELOCK, STL-AB
-	802130-1	BASE INTAKE, 6.00" W/6.0-150#RF, STL-AB
-31/QTY.	-21/QTY.	-11/QTY.
-1/QTY.	ITEM #	PART #
		DESCRIPTION

UNLESS OTHERWISE SPECIFIED: DIMENSIONS ARE IN INCHES TOLERANCES DECIMALS ANGULAR .XX ±.03 ±1° .XXX ±.010 DO NOT SCALE DRAWING

TREATMENT N/A

FINISH SEE SUFFIX TABLE

SHEET SIZE SUPP. #

STANG INDUSTRIES INC.
 1250 RAILROAD ST.
 CORONA, CA 92882

MONITOR, 6.00" STATION W/BLADELOCK, STL-AB

NEW PART NUMBER **960200**

CAGE# 55822 DRAWN EK CHECK REVISION A

DATE 03.11.05 DESIGN SCALE NTS SHEET 1 OF 1

The information and design disclosed herein is the property of Stang Industries Inc. All proprietary use and sales rights thereto are reserved. This disclosure is confidential and must not be copied in whole or part.