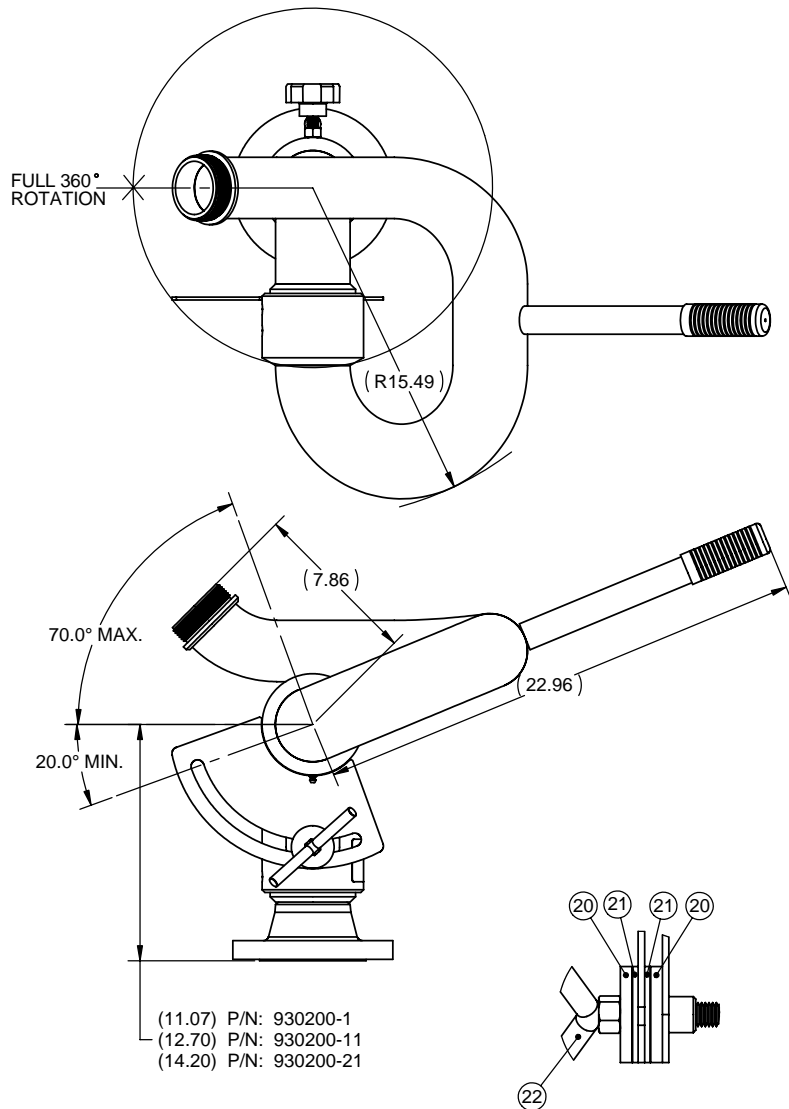
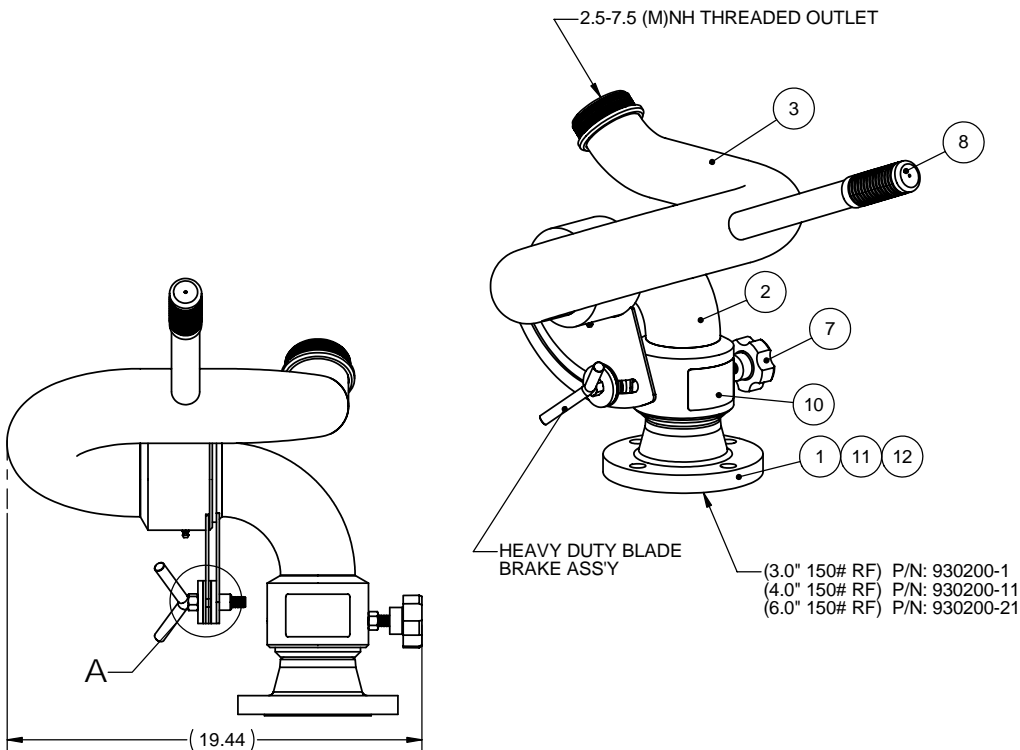


- NOTES:
 1) DO NOT SCALE THIS DRAWING
 2) BREAK ALL SHARP EDGES
 3) ALL DIMENSIONS DISPLAYED IN PARENTHESES ARE FOR REFERENCE ONLY
 4) FINISH IS "STANG RED" POLYESTER POWDERCOAT

ITEM NO.	-1 QTY	-11 QTY	-21 QTY	PART NUMBER	DESCRIPTION
1	1	-	-	100698-51	BASE INTAKE, 3.0" W/3.0-150# WN RF, STL-AB
2	1	1	1	801205-11	ELL, LOWER, 3.00" NOM., STL-AB
3	1	1	1	801215-11	ELL, 3.0" UPPER W/BLADE BRAKE, STL-AB
4	2	2	2	103817-11	WASHER, FLAT, 2.00OD X .56ID X .25T, 304
5	2	2	2	105448-11	WASHER, FLAT, .50ID X 2.00OD X .120T, DELRIN
6	1	1	1	103815-11	LOCK HANDLE WELDMENT
7	1	1	1	102537-1	LOCK KNOB, 50-20UNF-2A THD
8	1	1	1	100256-8	GRIP,HAND,BLK PLSTC,#RG28055
9	2	2	2	103830-1	SWIVEL KIT, 3.0 NOM.
10	1	1	1	100853-1	PLATE, ALUM ID
11	-	1	-	100698-61	BASE INTAKE, 3.0" W/4.0-150# SO RF, STL-AB
12	-	-	1	100698-231	BASE INTAKE, 3.0" W/6.0-150# SO RF, STL-AB



DETAIL A
SCALE 1 : 2



UNLESS OTHERWISE SPECIFIED: DIMENSIONS ARE IN INCHES
 TOLERANCES
 DECIMALS ANGULAR
 .XX ±.03 ±1°
 .XXX ±.010
 DO NOT SCALE DRAWING

STANG INDUSTRIAL PRODUCTS
 DIV. OF GST INDUSTRIES
 16692 BURKE LN.
 HUNTINGTON BEACH, CA 92647

MONITOR, 3.0" STATION W/BLADE BRAKE

NEW PART NUMBER **930200**

CAGE# **55822** DRAWN **RBS** CHECK REVISION

DATE **12/20/03** DESIGN SCALE **1:4.5** SHEET **1 OF 1**

LTR	REVISIONS	DATE	BY

The information and design disclosed herein is the property of GST Industries Inc. All proprietary use and sales rights thereto are reserved. This disclosure is confidential and must not be copied in whole or part.

C