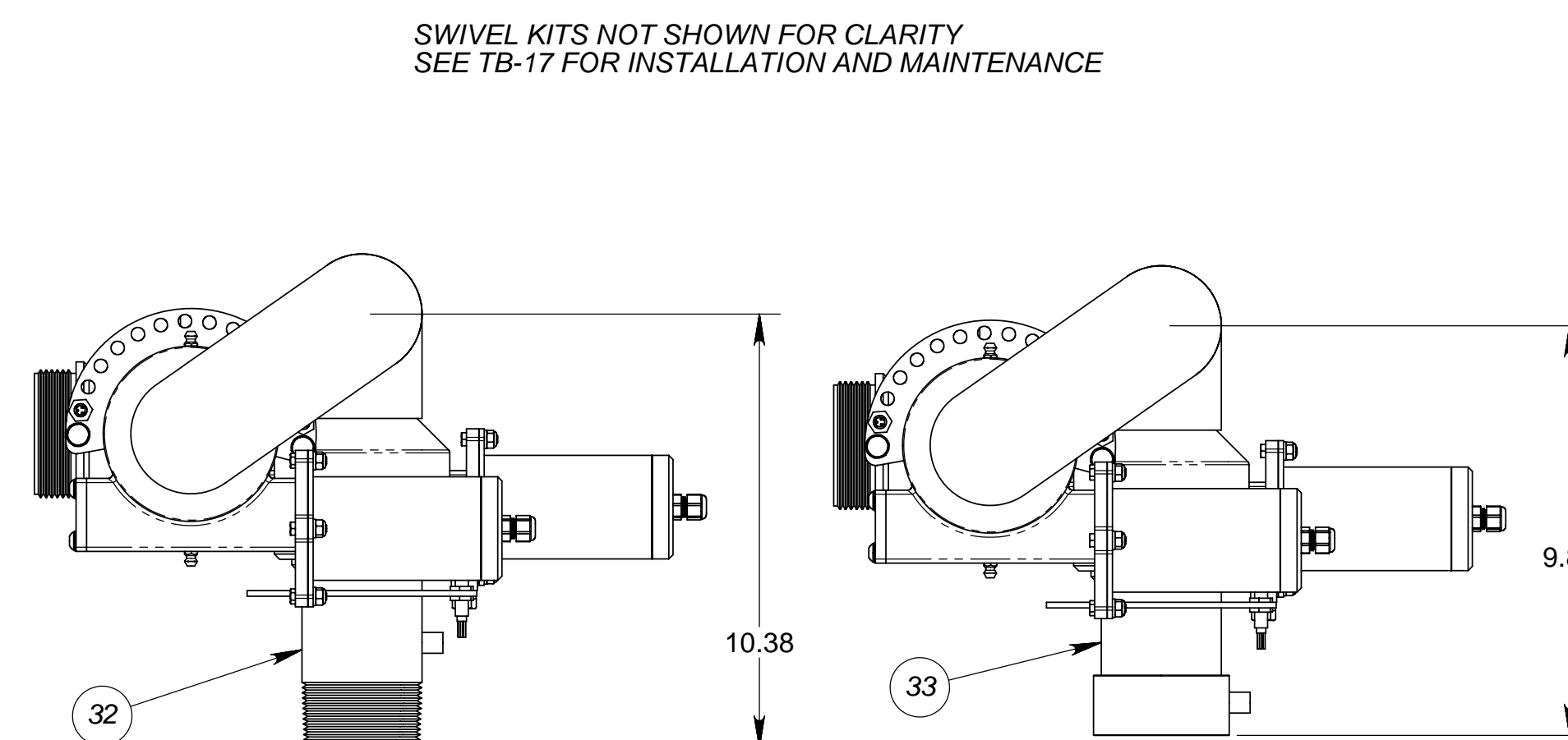
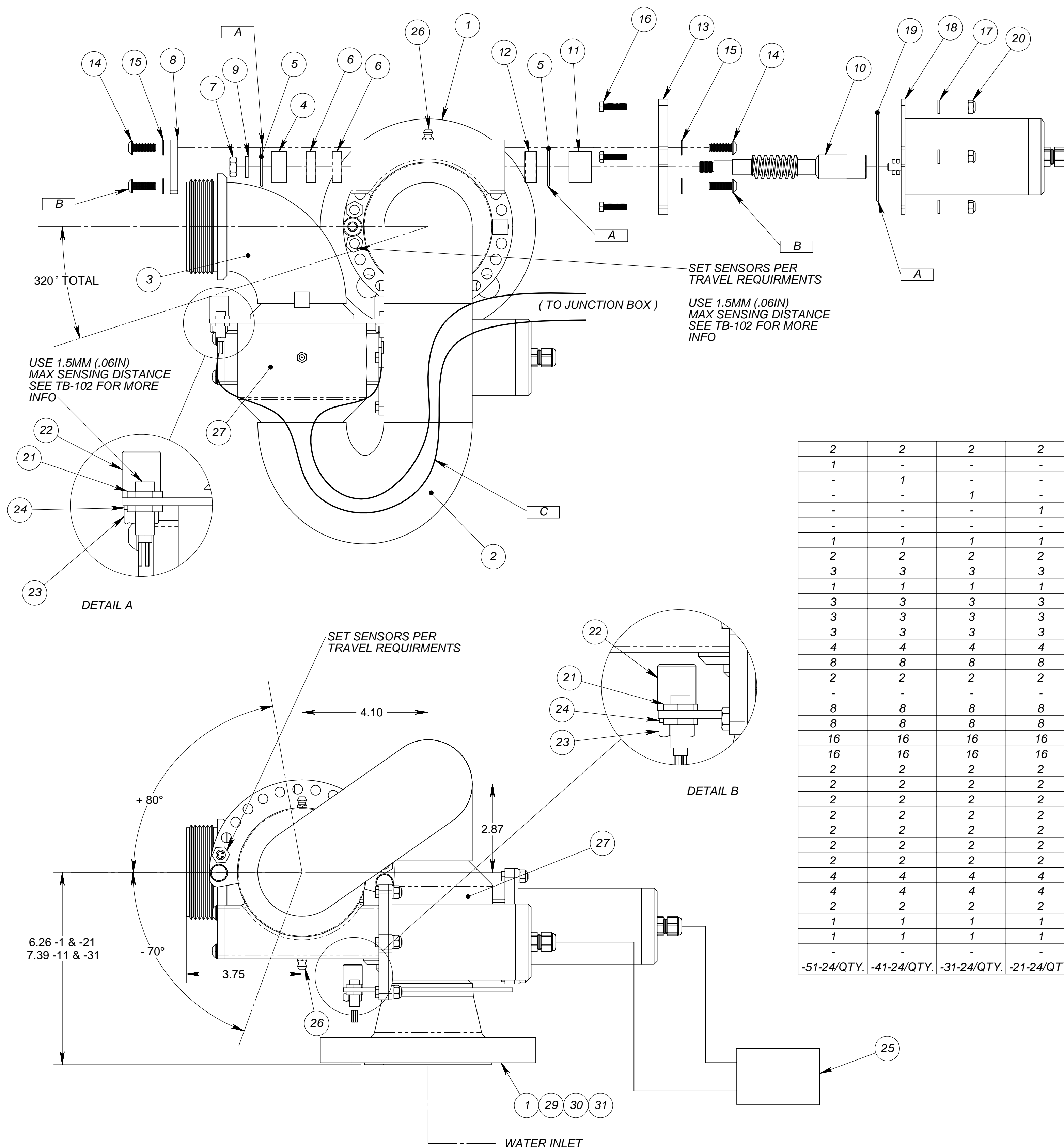


- NOTES:
 1. DO NOT SCALE THIS DRAWING.
 2. BREAK ALL SHARP EDGES.
 3. ALL DIMENSIONS DISPLAYED IN PARENTHESES ARE FOR REFERENCE ONLY.
 4. MONITOR IS POWDER COATED OR PAINTED STANG RED. ADD "EP" SUFFIX FOR EPOXY COAT.
 5. SEE DRAWING NUMBER 105208-491 FOR WIRING.
 6. SEE DOCUMENT # 925585om FOR ASSY & MAINTANCE.
 7. APPLY A GENEROUS AMOUNT OF GREASE TO WORM & DRIVE MECHANISM DURING ASSY.

ASSEMBLY NOTES	
A	APPLY GREASE ON O-RING TO HOLD IN PLACE
B	APPLY NON-PERMANANT LOCTITE ON THREADS
C	USE CABLE TIES TO FASTEN SENSOR WIRES TO WATERWAY; BUNDLE MOTOR WIRES WITH VERTICAL SENSOR WIRES & COVER WITH FLEXIBLE WIRE SLEEVE; MAKE SURE THERE IS SUFFICIENT LENGTH FOR ALL POSSIBLE EQUIPMENT MOTION; WIRE INTO JUNCTION POINT PER DRAWING 105208-491

REVISIONS			
LTR	REVISION	DATE	BY
A	INITIAL RELEASE	09/06/07	EK



MALE 2.50" NPT

FEMALE 2.50" NPT

GENERAL INFORMATION

MONITOR (WATER CANNON) HAS A WATERWAY SIZE OF 2.50" (60MM). UNIT IS CONTROLLED VIA TWO MOTORS, ONE FOR HORIZONTAL AND ONE FOR VERTICAL ROTATIONS. INDUCTIVE PROXIMITY SWITCHES LIMIT THE ROTATIONAL TRAVEL AND ARE SET AT ANGULAR INCREMENTS.

FLOW: UP TO 1000GPM (227M³/H)
 PRESSURE: 50-150PSI (3.45-10.35BAR)
 OPTIMUM PRESSURE: 100PSI (6.9 BAR)
 OUTLET THREAD: 2.50NH
 MATERIALS:
 WATERWAY: STEEL
 SWIVELS: ALUMINUM BRONZE

CONFIGURATION TABLE

THE LAST DASH NUMBER IN THE PART NUMBER IS THE VOLTAGE, 12 OR 24 VDC

FIRST DASH #	INTLET TYPE
925585-1-XX	2.5-150#RF
925585-11-XX	3.0-150#RF
925585-21-XX	2.5-150#FF
925585-31-XX	3.0-150#FF
925585-41-XX	W/2.5NPT(M)
925585-51-XX	W/2.5NPT(F)

2	2	2	2	2	2	-	-	-	-	-	-	-	-	34	385120-11	HOUSING ASS'Y W/24VDC MOTOR
1	-	-	-	-	-	1	-	-	-	-	-	-	-	33	800410-51	BASE INTAKE, 2.50" SLP W/2.5NPT(F), SS-AB
-	1	-	-	-	-	-	1	-	-	-	-	-	-	32	800410-41	BASE INTAKE, 2.50" SLP W/2.5NPT(M), SS-AB
-	-	1	-	-	-	-	-	1	-	-	-	-	-	31	800415-31	BASE INTAKE, 2.50" SLP W/3.0-150#FF, STL-AB
-	-	-	1	-	-	-	-	-	-	1	-	-	-	30	800415-21	BASE INTAKE, 2.50" SLP W/2.5-150#FF, STL-AB
-	-	-	-	1	-	-	-	-	-	-	1	-	-	29	800415-11	BASE INTAKE, 2.50" SLP W/3.0-150#RF, STL-AB
1	1	1	1	1	1	1	1	1	1	1	1	1	1	28	100112-10	FITTING, ZERK, 90°, 1/4-28NPT, C304
2	2	2	2	2	2	2	2	2	2	2	2	2	2	27	103829-1	SWIVEL KIT, 2.5 NOM.
3	3	3	3	3	3	3	3	3	3	3	3	3	3	26	100112-8	FITTING, ZERK, STR, 1/4-28UNF, CRES
1	1	1	1	1	1	1	1	1	1	1	1	1	1	25	784200-XX	MODULE, DC MONITOR JUNCTION BOX
3	3	3	3	3	3	3	3	3	3	3	3	3	3	24	101715-31C	WASHER, FLAT, .325ID X.562OD X.063T, 18-8
3	3	3	3	3	3	3	3	3	3	3	3	3	3	23	102472-50C	BOLT, HH, 5/16-18UNC X .50L, 18-8
3	3	3	3	3	3	3	3	3	3	3	3	3	3	22	331499-2	STOP, DC MONITOR SCREW-ON HARD-SS
4	4	4	4	4	4	4	4	4	4	4	4	4	4	21	162415-6	PROXIMITY SWITCH, 8mm BODY, 3 WIRE NC INDUCTIVE, 10-30VDC
8	8	8	8	8	8	8	8	8	8	8	8	8	8	20	100249-42C	NUT, NYLOCK, 10-32UNF, 18-8
2	2	2	2	2	2	2	2	2	2	2	2	2	2	19	100128-039	O-RING, AS568A-039, 2.750ID X .070CS, BUNA-N
-	-	-	-	-	-	-	-	-	-	-	-	-	-	18	385120-1	HOUSING ASS'Y W/12VDC MOTOR
8	8	8	8	8	8	8	8	8	8	8	8	8	8	17	101715-10C	WASHER, FLAT, .203ID X.440OD X.063T, 18-8
8	8	8	8	8	8	8	8	8	8	8	8	8	8	16	115155-103275C	SCREW, HHFT, 10-32UNF X .75L, 18-8
16	16	16	16	16	16	16	16	16	16	16	16	16	16	15	100037-11C	WASHER, LOCK, INTERNAL, 1/4", 410
16	16	16	16	16	16	16	16	16	16	16	16	16	16	14	100258-42075C	SCREW, BHC, 1/4-20UNC X .75L, 18-8
2	2	2	2	2	2	2	2	2	2	2	2	2	2	13	301612-1	PLATE, SLP ADAPTER, MOTOR MTG.
2	2	2	2	2	2	2	2	2	2	2	2	2	2	12	131300-1	BEARING, NEEDLE, 26mm OD X 20mm ID X 10mm WD
2	2	2	2	2	2	2	2	2	2	2	2	2	2	11	760618-11	SPACER, BEARING, ALUM
2	2	2	2	2	2	2	2	2	2	2	2	2	2	10	706518-1	WORM, .750" DIA. 304L
2	2	2	2	2	2	2	2	2	2	2	2	2	2	9	103109-8C	WASHER, LOCK, SPLIT, 3/8" NOM, 18-8
2	2	2	2	2	2	2	2	2	2	2	2	2	2	8	301581-11	COVER, END, 2.5" CROSSTUBE, 6061
2	2	2	2	2	2	2	2	2	2	2	2	2	2	7	102981-3C	NUT, JAM, 3/8-24UNF, 18-8
4	4	4	4	4	4	4	4	4	4	4	4	4	4	6	131400-5	BEARING, ROLLER DG, 26mm OD X 10mm ID X 8mm WD
4	4	4	4	4	4	4	4	4	4	4	4	4	4	5	100128-024	O-RING, 1.125ID X .070CS, BUNA-N
2	2	2	2	2	2	2	2	2	2	2	2	2	2	4	760618-1	SPACER, BEARING, ALUM
1	1	1	1	1	1	1	1	1	1	1	1	1	1	3	801393-1	ELL, UPPER, 2.50" ELECTRIC SLP, STL-AB
1	1	1	1	1	1	1	1	1	1	1	1	1	1	2	801387-1	ELL, LOWER, 2.50" ELECTRIC SLP, STL-AB
-	-	-	-	-	-	1	-	-	-	-	-	-	-	1	800415-1	BASE INTAKE, 2.50" SLP W/2.5-150#RF, STL-AB
-51-24/QTY.	-41-24/QTY.	-31-24/QTY.	-21-24/QTY.	-11-24/QTY.	-1-24/QTY.	-51-12/QTY.	-41-12/QTY.	-31-12/QTY.	-21-12/QTY.	-11-12/QTY.	-1-12/QTY.	ITEM NO.	P/N	DESCRIPTION		

UNLESS OTHERWISE SPECIFIED: DIMENSIONS ARE IN INCHES TOLERANCES DECIMALS ANGULAR XX ±.03 .XXX ±.010

DO NOT SCALE DRAWING

TREATMENT SEE NOTES

FINISH SEE NOTES

SIZE SUPP.# N/A

STANG INDUSTRIAL PRODUCTS
 1250 RAILROAD ST.
 CORONA, CA 92882

MONITOR, 2.50" SLP DC RELAY STYLE, STL-AB

P/N	925585	MATL.	
CAGE#	55822	DRAWN	EK
DATE	09/05/07	DESIGN	
SCALE	NTS	SHEET	1 OF 1
REVISION	A		

The information and design disclosed herein is the property of Stang Industries Inc. All proprietary use and sales rights thereto are reserved. This disclosure is confidential and must not be copied in whole or part.