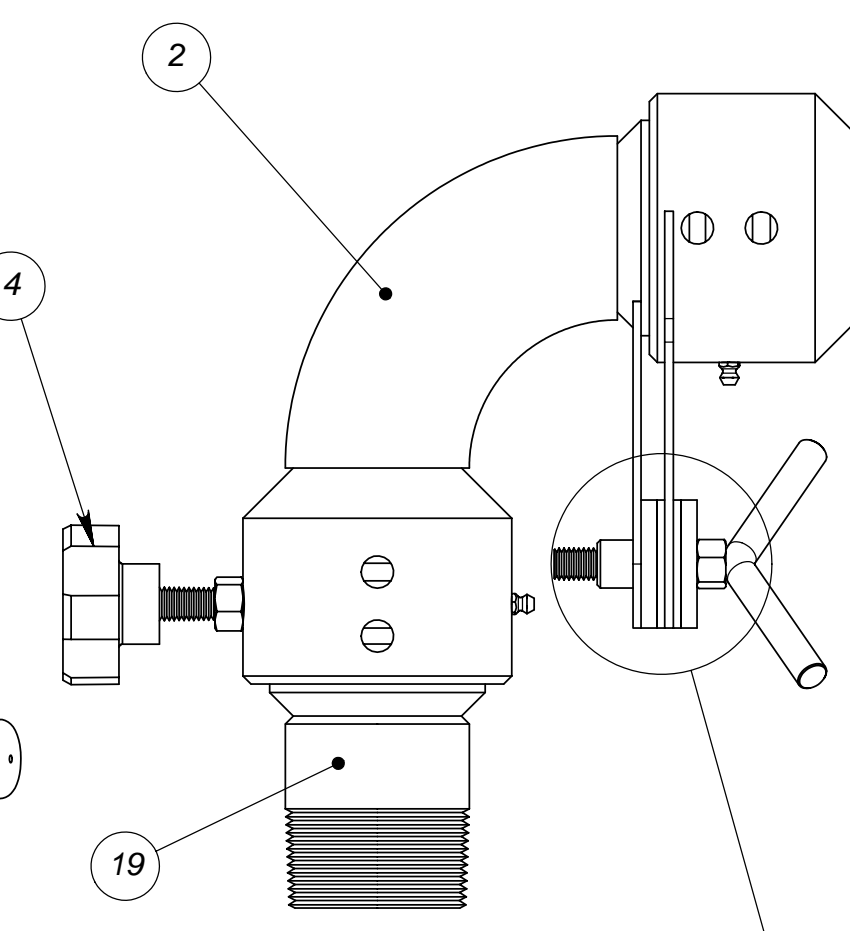
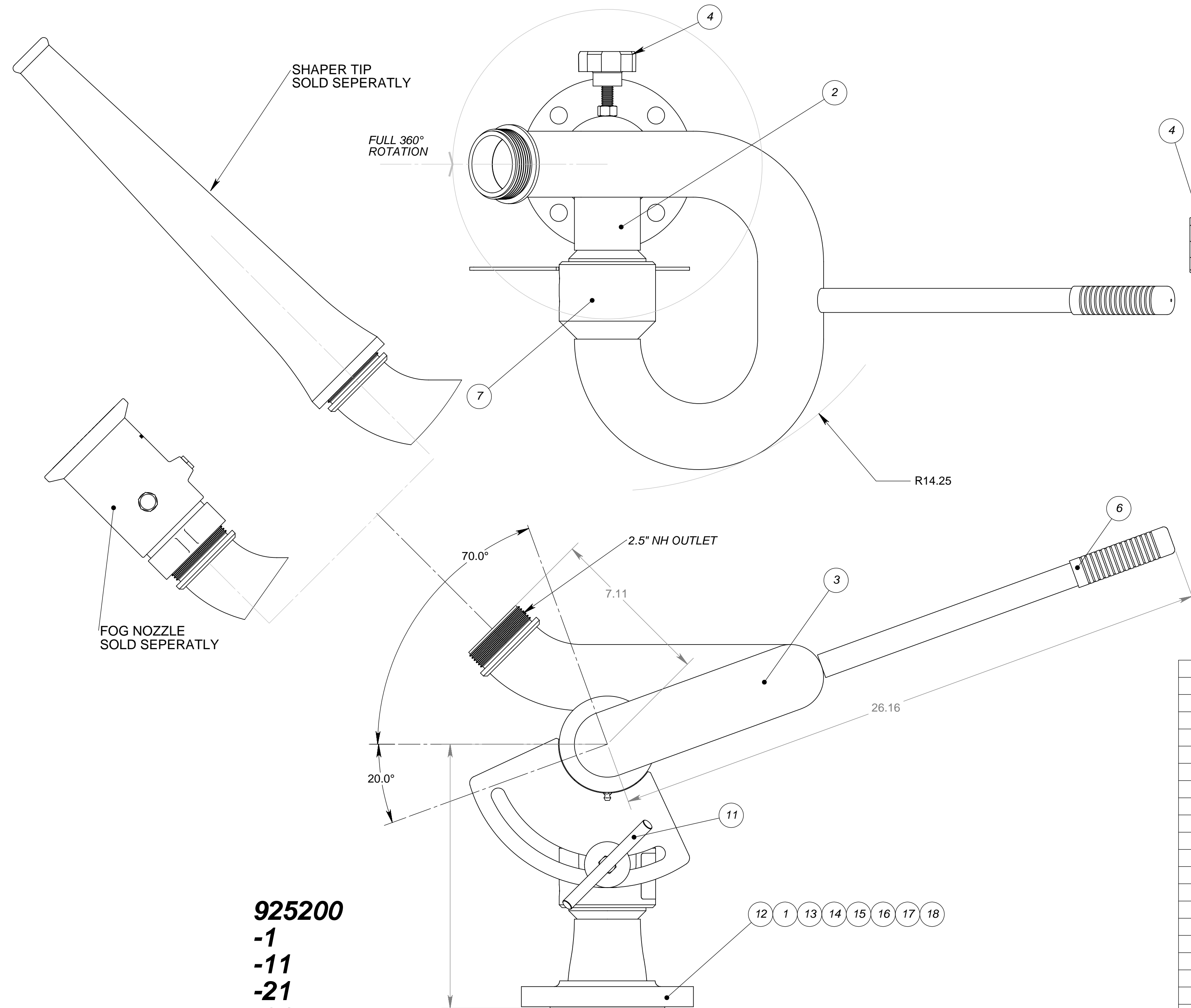
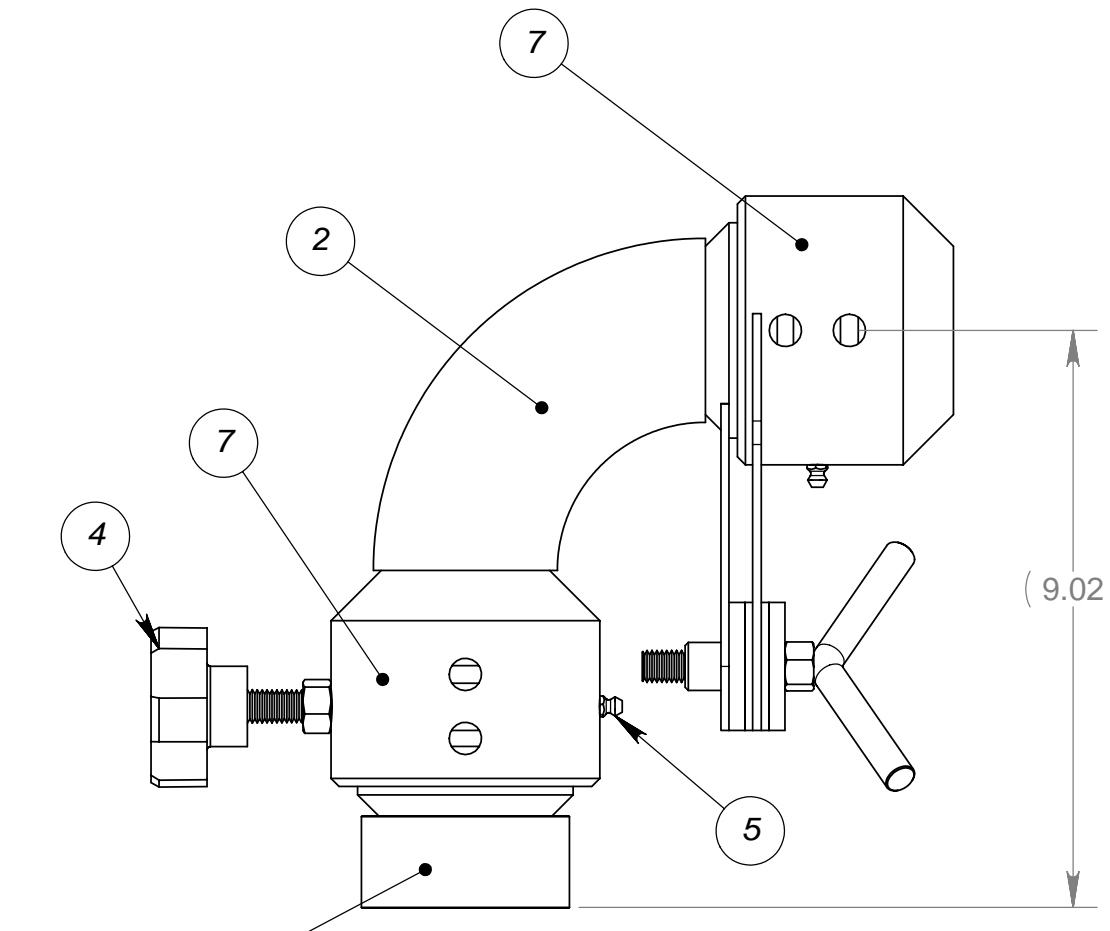


NOTES:  
 1) DO NOT SCALE THIS DRAWING  
 2) BREAK ALL SHARP EDGES  
 3) ALL DIMENSIONS DISPLAYED IN PARENTHESES ARE FOR REFERENCE ONLY  
 4) IF MONITOR DASH NUMBER HAS A SUFFIX SUCH AS EP MAKE SURE THAT THE MAJOR SUB-ASSEMBLIES HAVE THE SAME SUFFIX.

REVISIONS			
LTR	REVISION	DATE	BY
A	ADDED -41	05/06/04	EK
B	PART # 100682-241 WAS PART # 103568-1; ADDED "EP" NOTE; ADDED -51, -61 & -71	07/21/04	EK
C	ADDED -81 & -91 AND CORRESPONDING BOM ITEMS	10/15/04	EK
D	CHANGED THE INTAKE BASES FROM 100682 SERIES TO 802085 & 802090 SERIES; REDRAW ON D-SIZE SHEET	8/23/2006	EK

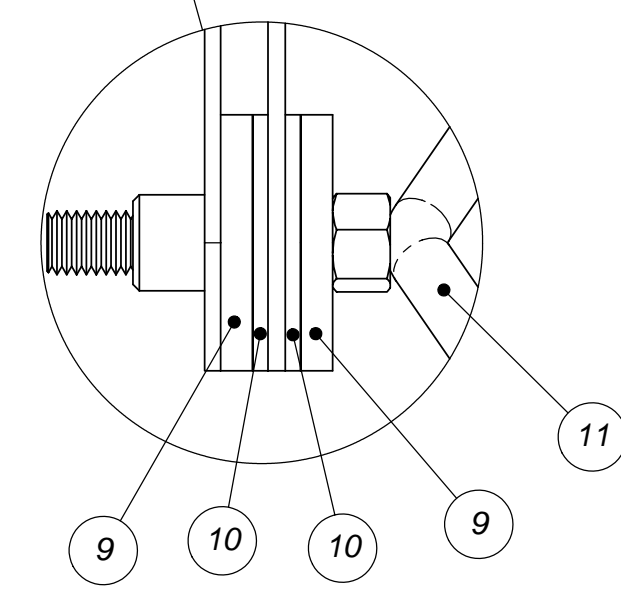


**925200-81**



**925200-91**

TYPICAL  
DETAIL A



SUFFIX TABLE	
DASH #	DESCRIPTION
NO SUFFIX	POWDER COAT STANG RED
EP	EPOXY COAT STANG RED
P	POLISHED (SS ONLY)
NP	NOT PAINTED

SEE NOTE 4

CONFIGURATION TABLE	
925200-1	MONITOR, 2.50" STATION W/2.5-150#RF & BL, STL-AB
925200-11	MONITOR, 2.50" STATION W/3.0-150#RF & BL, STL-AB
925200-21	MONITOR, 2.50" STATION W/4.0-150#RF & BL, STL-AB
925200-31	MONITOR, 2.50" STATION W/6.0-150#RF & BL, STL-AB
925200-41	MONITOR, 2.50" STATION W/4.0-150#FF & BL, STL-AB
925200-51	MONITOR, 2.50" STATION W/2.5-150#FF & BL, STL-AB
925200-61	MONITOR, 2.50" STATION W/3.0-150#FF & BL, STL-AB
925200-71	MONITOR, 2.50" STATION W/6.0-150#FF & BL, STL-AB
925200-81	MONITOR, 2.50" STATION W/2.5NPT(M) & BL, STL-AB
925200-91	MONITOR, 2.50" STATION W/2.5NPT(F) & BL, STL-AB

**925200**  
**-1**  
**-11**  
**-21**  
**-31**  
**-41**  
**-51**  
**-61**  
**-71**

10.38: -1 & -51  
 11.51: -11 & -61  
 12.00: -21 & -41  
 13.51: -31 & -71

1	-	-	-	-	-	-	-	-	-	-	20	802090-91	BASE INTAKE, 2.50" W/2.5NPT(F), SS-AB
-	1	-	-	-	-	-	-	-	-	-	19	802090-81	BASE INTAKE, 2.50" W/2.5NPT(M), SS-AB
-	-	1	-	-	-	-	-	-	-	-	18	802085-71	BASE INTAKE, 2.50" W/6.0-150#FF FLG, STL-AB
-	-	-	1	-	-	-	-	-	-	-	17	802085-51	BASE INTAKE, 2.50" W/3.0-150#FF FLG, STL-AB
-	-	-	-	1	-	-	-	-	-	-	16	802085-41	BASE INTAKE, 2.50" W/2.5-150#FF FLG, STL-AB
-	-	-	-	-	1	-	-	-	-	-	15	802085-61	BASE INTAKE, 2.50" W/4.0-150#FF FLG, STL-AB
-	-	-	-	-	-	1	-	-	-	-	14	802085-31	BASE INTAKE, 2.50" W/6.0-150#RF FLG, STL-AB
-	-	-	-	-	-	-	1	-	-	-	13	802085-21	BASE INTAKE, 2.50" W/4.0-150#RF FLG, STL-AB
-	-	-	-	-	-	-	-	1	-	-	12	802085-11	BASE INTAKE, 2.50" W/3.0-150#RF FLG, STL-AB
1	1	1	1	1	1	1	1	1	1	1	11	103815-11	LOCK HANDLE WELDMENT
2	2	2	2	2	2	2	2	2	2	2	10	105448-11	WASHER, FLAT, .50ID X 2.00OD X .120T, DELRIN
2	2	2	2	2	2	2	2	2	2	2	9	103817-11	WASHER, FLAT, 2.00OD X .56ID X .25T, 304
1	1	1	1	1	1	1	1	1	1	1	8	100853-1	PLATE, ALUM ID
2	2	2	2	2	2	2	2	2	2	2	7	103829-1	SWIVEL KIT, 2.5 NOM.
1	1	1	1	1	1	1	1	1	1	1	6	100256-2	GRIP,HAND,BLK PLSTC,#RG14055
2	2	2	2	2	2	2	2	2	2	2	5	100112-8	FITTING, ZERK, STR, 1/4-28UNF, CRES
1	1	1	1	1	1	1	1	1	1	1	4	102537-1	LOCK KNOB, 50-20UNF-2A THD
1	1	1	1	1	1	1	1	1	1	1	3	801200-11	ELL, UPPER, 2.50" W/BLADE BRAKE, STL-AB
1	1	1	1	1	1	1	1	1	1	1	2	801210-11	ELL, LOWER, 2.50" W/BLADE BRAKE, STL-AB
-	-	-	-	-	-	-	-	-	-	1	1	802085-1	BASE INTAKE, 2.50" W/2.5-150#RF FLG, STL-AB
-91/QTY.	-81/QTY.	-71/QTY.	-61/QTY.	-51/QTY.	-41/QTY.	-31/QTY.	-21/QTY.	-11/QTY.	-1/QTY.	ITEM NO.	PART NUMBER	DESCRIPTION	

UNLESS OTHERWISE SPECIFIED: DIMENSIONS ARE IN INCHES  
 TOLERANCES  
 DECIMALS ANGULAR  
 .XX ±.03 ±2°  
 .XXX ±.010

DO NOT SCALE DRAWING  
 TREATMENT SEE NOTES  
 FINISH SEE NOTES

**STANG INDUSTRIAL PRODUCTS**  
 1250 RAILROAD ST.  
 CORONA, CA 92882

**MONITOR, 2.50" STATION W/BLADELOCK**

PIN	<b>925200</b>	MATL	STL-AB
CAGE#	55822	DRAWN	EK
DATE	08/23/06	CHECK	REVISION
SCALE	NTS	SHEET	D
ORIGINAL DRAWING DATE:	10/16/03	SCALE	1 OF 1

The information and design disclosed herein is the property of Stang Industries Inc. All proprietary use and sales rights thereto are reserved. This disclosure is confidential and must not be copied in whole or part.