

- NOTES:
- DO NOT SCALE THIS DRAWING.
 - BREAK ALL SHARP EDGES.
 - ALL DIMENSIONS DISPLAYED IN PARENTHESES ARE FOR REFERENCE ONLY.
 - MONITOR IS POWDER COATED OR PAINTED STANG RED. ADD "EP" SUFFIX FOR EPOXY COAT.
 - SEE DRAWING NUMBER 105208-491 FOR WIRING.
 - SEE DOCUMENT # 915585om FOR ASSY & MAINTANCE.

ASSEMBLY NOTES	
A	APPLY GREASE ON O-RING TO HOLD IN PLACE
B	PLACE O-RING ON WORM & GREASE PRIOR TO ASSY
C	APPLY NON-PERMANANT LOCTITE ON THREADS
D	USE CABLE TIES TO FASTEN SENSOR WIRES TO WATERWAY; BUNDLE MOTOR WIRES WITH VERTICAL SENSOR WIRES & COVER WITH FLEXIBLE WIRE SLEEVE; MAKE SURE THERE IS SUFFICIENT LENGTH FOR ALL POSSIBLE EQUIPMENT MOTION; WIRE INTO JUNCTION POINT PER DRAWING 105208-491

REVISIONS			
LTR	REVISION	DATE	BY
A	INITIAL RELEASE	08/21/07	DB

GENERAL INFORMATION

MONITOR (WATER CANNON) HAS A WATERWAY SIZE OF 1.50" (40MM). UNIT IS CONTROLLED VIA TWO MOTORS, ONE FOR HORIZONTAL AND ONE FOR VERTICAL ROTATIONS. INDUCTIVE PROXIMITY SWITCHES LIMIT THE ROTATIONAL TRAVEL AND ARE SET AT ANGULAR INCREMENTS.

FLOW: UP TO 350GPM (79.50M³/H)

PRESSURE: 50-150PSI (3.45-10.35BAR)

OPTIMUM PRESSURE: 100PSI (6.9 BAR)

OUTLET THREAD: 1.50NH

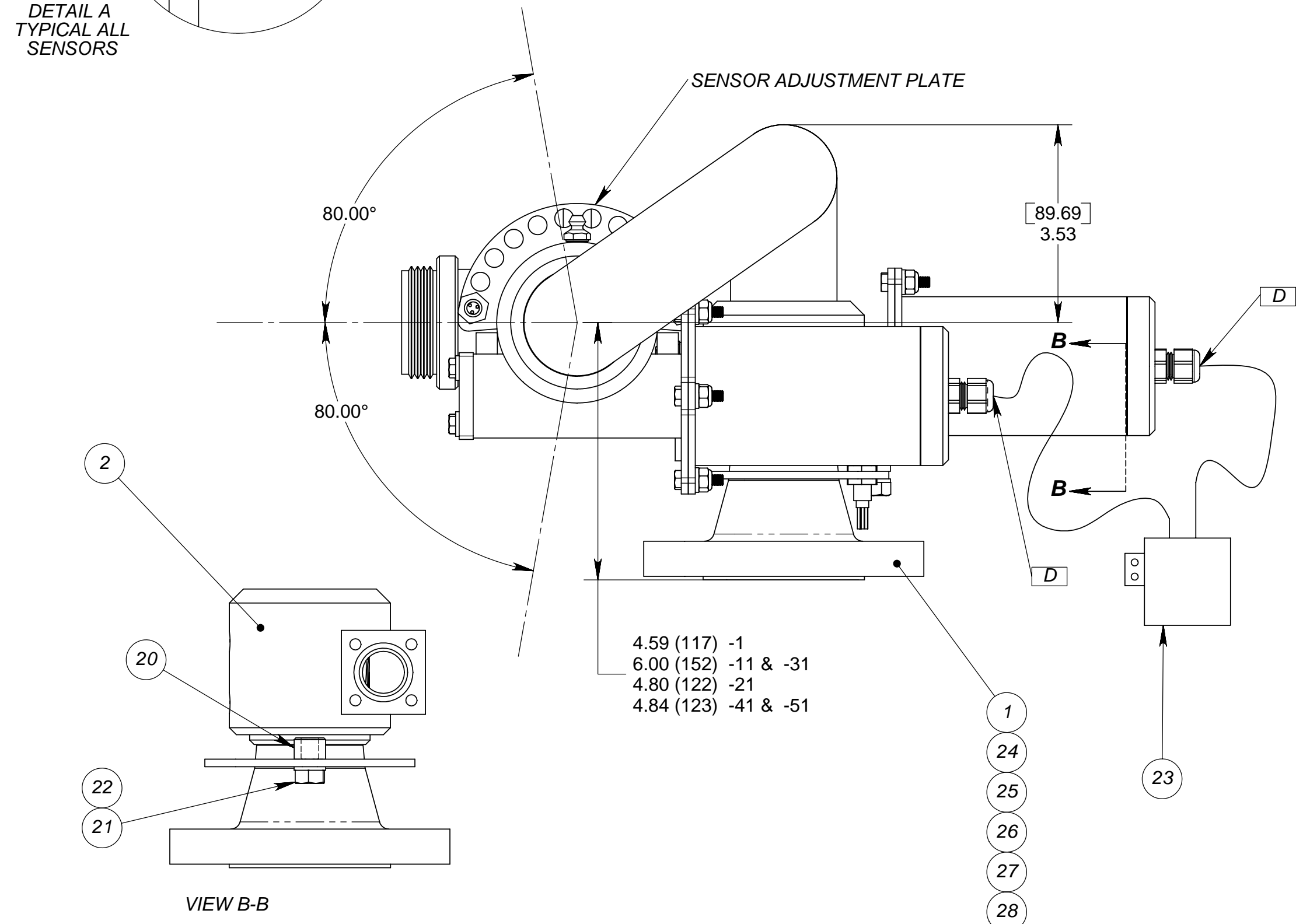
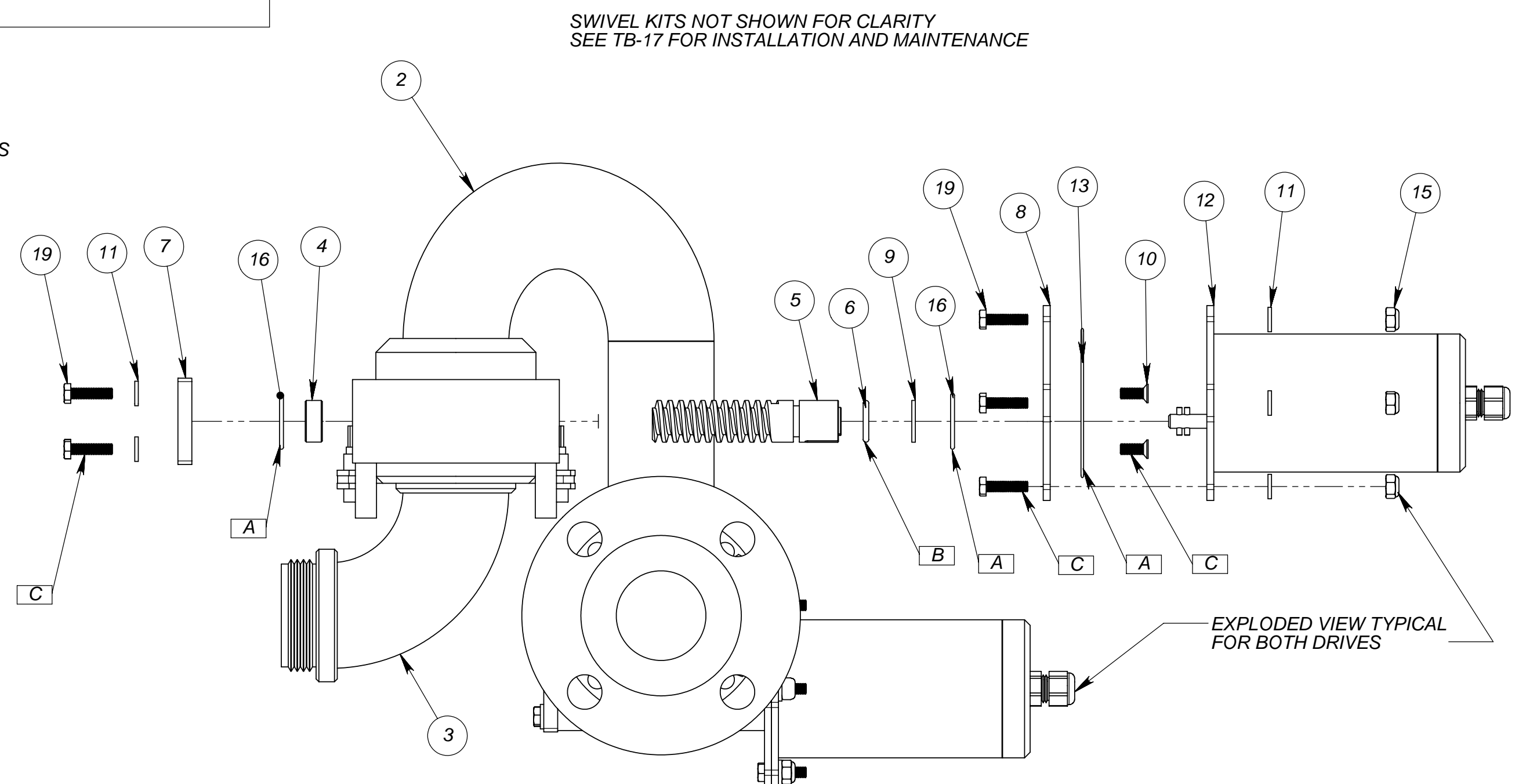
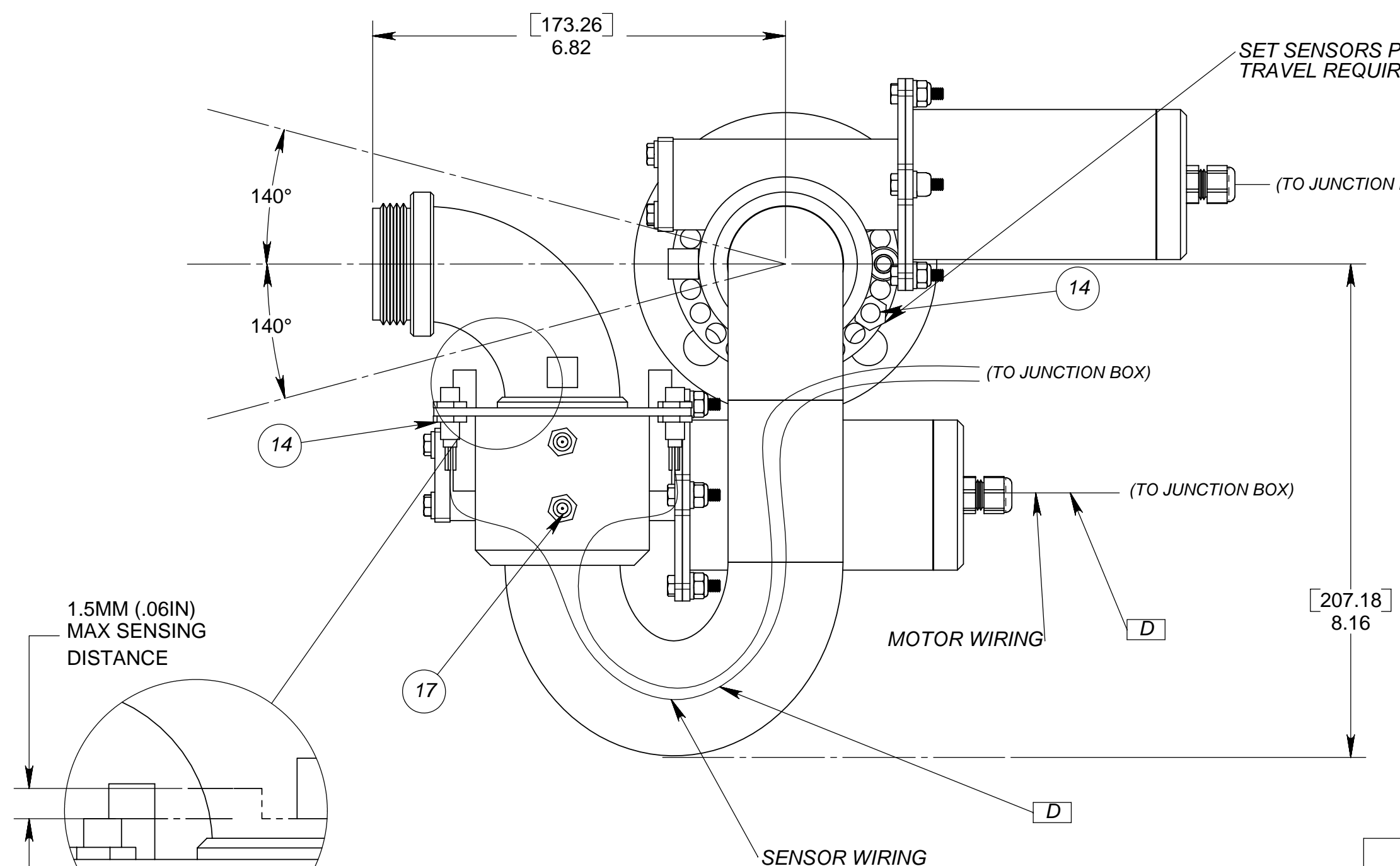
MATERIALS:

WATERWAY: STEEL
SWIVELS: ALUMINUM BRONZE

CONFIGURATION TABLE

THE LAST DASH NUMBER IN THE PART NUMBER IS THE VOLTAGE, 12 OR 24 VDC

FIRST DASH #	INLET TYPE
915585-1-XX	1.5-150#RF
915585-11-XX	2.5-150#RF
915585-21-XX	1.5-150#FF
915585-31-XX	2.5-150#FF
915585-41-XX	W/1.5NPT(M)
915585-51-XX	W/1.5NPT(F)



2	2	2	2	2	2	-	-	-	-	-	-	29	385112-11	HOUSING ASS'Y W/24VDC MOTOR
1	-	-	-	-	-	1	-	-	-	-	-	28	800205-51	BASE INTAKE, 1.50" SLP W/1.5NPT(F), SS-AB
-	1	-	-	-	-	-	1	-	-	-	-	27	800205-41	BASE INTAKE, 1.50" SLP W/1.5NPT(M), SS-AB
-	-	1	-	-	-	-	-	1	-	-	-	26	800204-31	BASE INTAKE, 1.50" SLP W/2.5-150#FF, STL-AB
-	-	-	1	-	-	-	-	-	1	-	-	25	800204-21	BASE INTAKE, 1.50" SLP W/1.5-150#FF, STL-AB
-	-	-	-	1	-	-	-	-	-	1	-	24	800204-11	BASE INTAKE, 1.50" SLP W/2.5-150#RF, STL-AB
1	1	1	1	1	1	1	1	1	1	1	1	23	784200-XX	MODULE, DC MONITOR JUNCTION BOX
1	1	1	1	1	1	1	1	1	1	1	1	22	101715-31C	WASHER, FLAT, .325ID X.562OD X.063T, 18-8
1	1	1	1	1	1	1	1	1	1	1	1	21	102472-50C	BOLT, HH, 5/16-18UNC X .50L, 18-8
1	1	1	1	1	1	1	1	1	1	1	1	20	331499-1	STOP, DC MONITOR SCREW-ON HARD-SS
16	16	16	16	16	16	16	16	16	16	16	16	19	115155-103275C	SCREW, HHFT, 10-32UNF X .75L, 18-8
1	1	1	1	1	1	1	1	1	1	1	1	18	103828-21	SWIVEL KIT, 1.5 NOM.
1	1	1	1	1	1	1	1	1	1	1	1	17	103828-1	SWIVEL KIT, 1.5 NOM.
4	4	4	4	4	4	4	4	4	4	4	4	16	100128-020	O-RING, AS568A-020, .864ID X .070Cs, BUNA-N
8	8	8	8	8	8	8	8	8	8	8	8	15	100249-42C	NUT, NYLOCK, 10-32UNF, 18-8
4	4	4	4	4	4	4	4	4	4	4	4	14	162415-6	PROXIMITY SWITCH, 8mm BODY, 3 WIRE NC INDUCTIVE, 10-30VDC
2	2	2	2	2	2	2	2	2	2	2	2	13	100128-037	O-RING, AS568A-037, 2.500ID X .070Cs, BUNA-N
-	-	-	-	-	-	2	2	2	2	2	2	12	385112-1	HOUSING ASS'Y W/12VDC MOTOR
16	16	16	16	16	16	16	16	16	16	16	16	11	101715-10C	WASHER, FLAT, .203ID X.44OD X.063T, 18-8
8	8	8	8	8	8	8	8	8	8	8	8	10	101512-103250C	SCREW, FH, 100°, CROSS, 10-32UNC X .50L, 18-8
2	2	2	2	2	2	2	2	2	2	2	2	9	110500	WASHER, THRST, BRZ, .50x.75 (5906K512)
2	2	2	2	2	2	2	2	2	2	2	2	8	301565-1	PLATE, 12-24V MOTOR MOUNTING
2	2	2	2	2	2	2	2	2	2	2	2	7	301574-1	PLATE, WORM CROSS TUBE END-ALUM
2	2	2	2	2	2	2	2	2	2	2	2	6	100128-113	O-RING, AS568A-113, .563ID X .103Cs, BUNA-N
2	2	2	2	2	2	2	2	2	2	2	2	5	706503-1	WORM, .750" NOM. DIA., 304L
2	2	2	2	2	2	2	2	2	2	2	2	4	110510-2	BEARING, .75 BRZ. FOR OVERRIDE THRUST
1	1	1	1	1	1	1	1	1	1	1	1	3	801378-1	ELL, UPPER, 1.50" SLP, STL-AB
1	1	1	1	1	1	1	1	1	1	1	1	2	801516-1	ELL, LOWER, 1.50" SLP, STL-AB
-	-	-	-	-	-	1	-	-	-	-	-	1	800204-1	BASE INTAKE, 1.50" SLP W/1.5-150#RF, STL-AB

UNLESS OTHERWISE SPECIFIED: DIMENSIONS ARE IN INCHES
TOLERANCES
DECIMALS ANGULAR
.XX ±.03 ±2°
.XXX ±.010

DO NOT SCALE DRAWING
TREATMENT SEE NOTES
FINISH SEE NOTES

STANG INDUSTRIAL PRODUCTS
1250 RAILROAD ST.
CORONA, CA 92882

MONITOR, 1.50" SLP DC RELAY STYLE, STL-AB

PIN: 915585
MATERIAL: N/A

CAGE#: 55822
DRAWN: DB
CHECK: N/A
REVISION: A

DATE: 08/21/07
DESIGN: N/A
SCALE: NTS
SHEET: 1 OF 1

The information and design disclosed herein is the property of Stang Industries Inc. All proprietary use and sales rights thereto are reserved. This disclosure is confidential and must not be copied in whole or part.