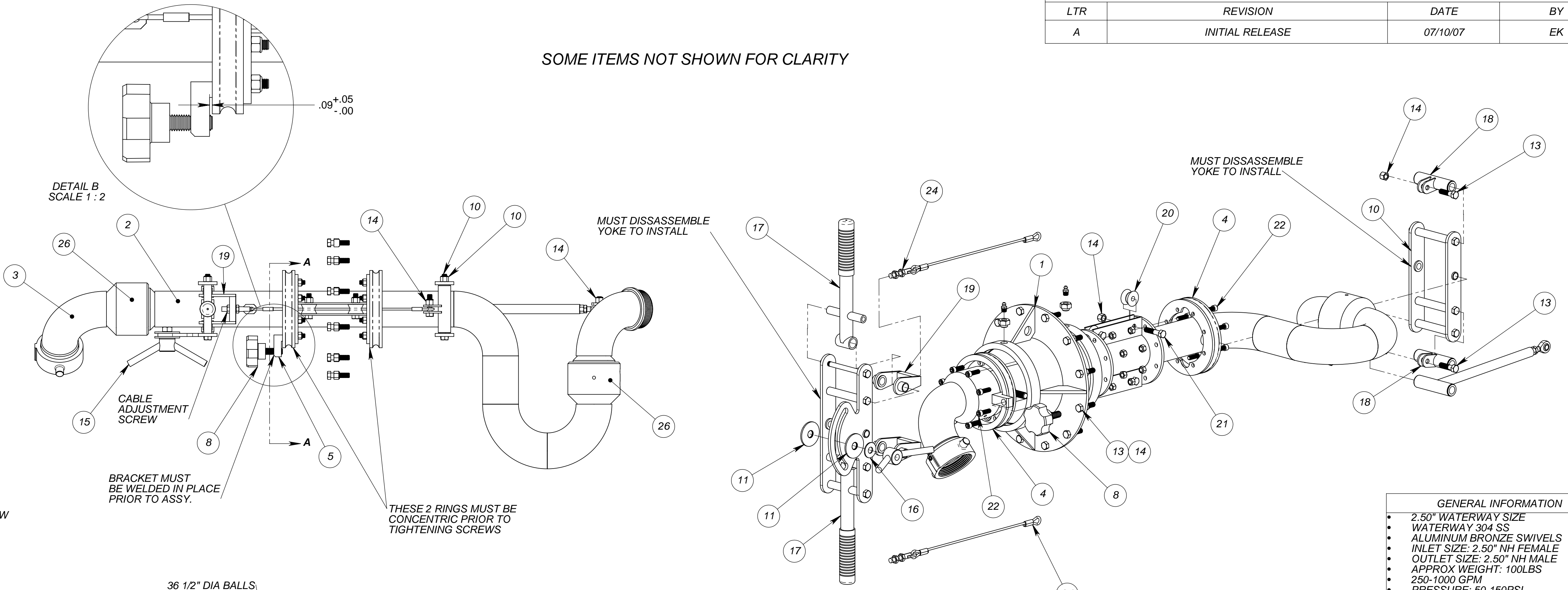


- NOTES:
- DO NOT SCALE THIS DRAWING
  - BREAK ALL SHARP EDGES
  - ALL DIMENSIONS DISPLAYED IN PARENTHESES ARE FOR REFERENCE ONLY
  - REFER TO INSTALLATION, OPERATION & MAINTENANCE MANUAL FOR EQUIPMENT USE.
  - PAINTED OR POWDER COATED STANG RED- ADD "EP" TO DASH NUMBER FOR RED EPOXY COAT.
  - APPLY A SMALL AMOUNT OF DRY GREASE TO ALL YOKE & CABLE PIVOT POINTS INCLUDING ROLLERS.
  - USE ANTI-SIEZE LUBRICANT ON ALL SS HARDWARE

- ASSEMBLY:
- FIRST INSTALL INNER ROTATER RINGS ON INNER ROTATER BODY. MAKE SURE THESE ARE CONCENTRIC-USE A FIXTURE TO HOLD IN PLACE WHILE TIGHTENING THE SCREWS.
  - INSTALL ROLLERS.
  - WELD ON LOCK KNOB BRACKET.
  - INSTALL ROTATER HOUSING WITH BALLS & BALL ACCESS PLUG.
  - ASSEMBLE INTAKE, BODY & UPPER ELL.
  - INSTALL CABLES BY FISHING THEM THROUGH ACCESS HOLES AND UNDER THE ROLLERS.
  - DISASSEMBLE YOKES TO INSTALL- ATTACH BRACKETS, HANDLES AND PUSHROD PRIOR TO YOKE REASSEMBLY.
  - CONNECT CABLES TO CABLE BRACKETS.
  - INSTALL PUSHROD.
  - MAKE ADJUSTMENTS TO CABLING & PUSHROD.
  - GREASE WHERE REQUIRED.

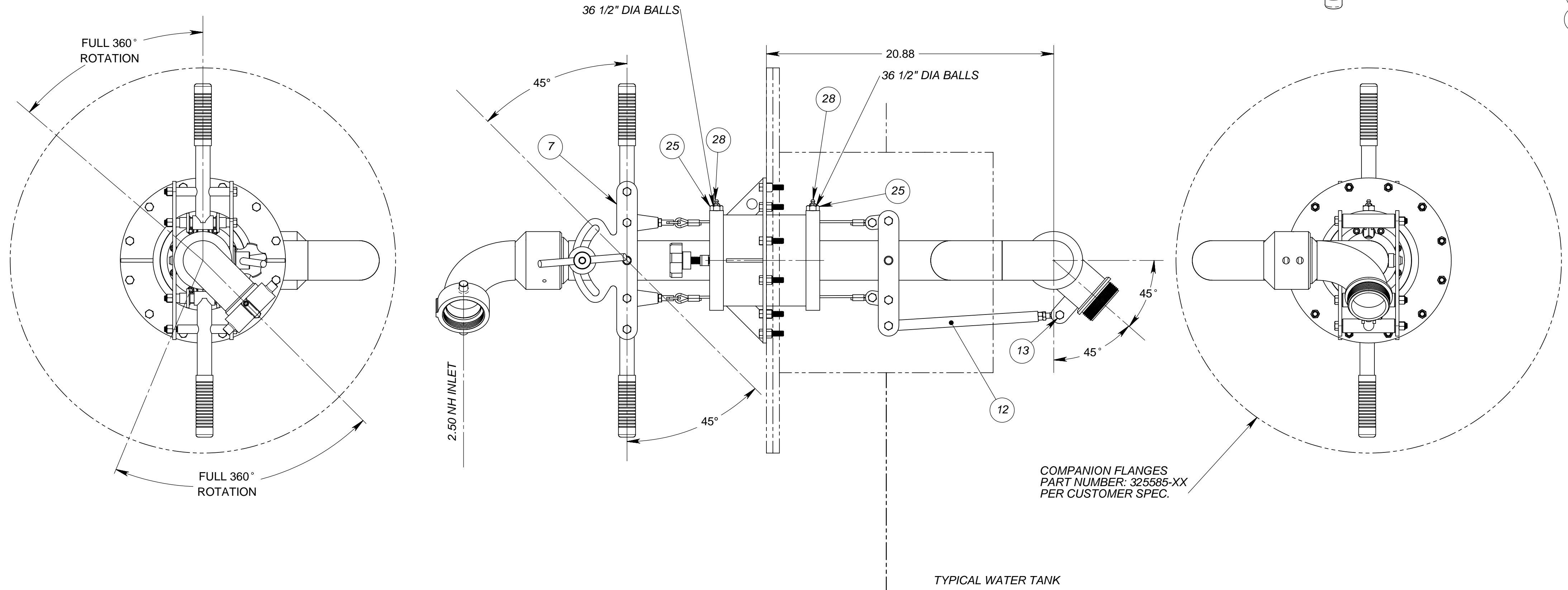
REVISIONS			
LTR	REVISION	DATE	BY
A	INITIAL RELEASE	07/10/07	EK

SOME ITEMS NOT SHOWN FOR CLARITY



GENERAL INFORMATION

- 2.50" WATERWAY SIZE
- WATERWAY 304 SS
- ALUMINUM BRONZE SWIVELS
- INLET SIZE: 2.50" NH FEMALE
- OUTLET SIZE: 2.50" NH MALE
- APPROX WEIGHT: 100LBS
- 250-1000 GPM
- PRESSURE: 50-150PSI



QTY.	ITEM NO.	PART NUMBER	DESCRIPTION
2	28	100112-5	FITTING, ZERK, STR, 1/8-27NPT, C303
72	27	100083-7	BALL, .500D, GR100, 440C
2	26	103829-1	SWIVEL KIT, 2.5 NOM.
2	25	278333-1	PLUG, BALL ACCESS W/ GREASE 9/16-18, 18-8
2	24	652211-14.00	CABLE, 13.75" TANK CLEANER ELEVATION CONTROL
16	23	100249-12C	NUT, NYLOCK, 5/16-18UNC, 18-8
16	22	104034-100C	SCREW, SHC, 5/16-18UNC X 1.00L, 18-8
4	21	102473-175C	BOLT, HH, 3/8-16UNC X 1.75L, 18-8
4	20	661339-1	ROLLER, 1.25D X .75L CABLE-DELTRIN
2	19	261499-1	BRACKET, TANK CLEANER CABLE ATTACH
2	18	800340-1	BRACKET, CABLE-YOKE ROTATER
2	17	800267-1	HANDLE, 10.00L TANK CLEANER CONTROL-SS
1	16	100064-33C	WASHER, FLAT, .515ID X 1.25OD X .062THK, 18-8
1	15	332591-1	HANDLE, TANK CLEANER BLADELOCK
19	14	100249-11C	NUT, NYLOCK, 3/8-16UNC, 18-8
15	13	102473-150C	BOLT, HH, 3/8-16UNC X 1.50L, 18-8
1	12	800278-10.88	PUSHROD, TANK CLEANER UPPER ELL
2	11	105448-11	WASHER, FLAT, .50ID X 2.00OD X .120T, DELTRIN
1	10	800269-1	YOKE, TANK CLEANER PUSHROD-SS
1	9	325585-XX	FLANGE, CUSTOM COMPANION
1	8	102537-1	LOCK KNOB, 50-20UNF-2A THD
1	7	800266-1	YOKE, TANK CLEANER BLADELOCK CONTROL-SS
1	6	801282-11	ELL, UPPER, 2.50" TANK CLEANER-SS-AB
1	5	345599-1	BRACKET, TANK CLEANER LOCK KNOB-SS
2	4	284117-1	RING, TANK CLEANER INNER ROTATOR, 304
1	3	802190-11	INTAKE, 2.50" TANK CLEANER, SS-AB
1	2	801966-1	BODY, 2.50" TANK CLEANER INNER ROTATER -SS
1	1	777699-1	HOUSING, TANK CLEANER ROTATER

UNLESS OTHERWISE SPECIFIED: DIMENSIONS ARE IN INCHES  
TOLERANCES  
DECIMALS ANGULAR  
.XX ±.03 ±2°  
.XXX ±.010

DO NOT SCALE DRAWING  
TREATMENT SEE NOTES

FINISH SEE NOTES

STANG INDUSTRIAL PRODUCTS  
1250 RAILROAD ST.  
CORONA, CA 92882

**TANK CLEANER, 2.50" SS-AB**

P/N 904790-1

SIZE D SUPP.# N/A

CAGE# 55822 DATE 07/10/07

DRAWN EK

CHECK EK

SCALE NTS

REVISION A

SHEET 1 OF 1

The information and design disclosed herein is the property of Stang Industries Inc. All proprietary use and sales rights thereto are reserved. This disclosure is confidential and must not be copied in whole or part.