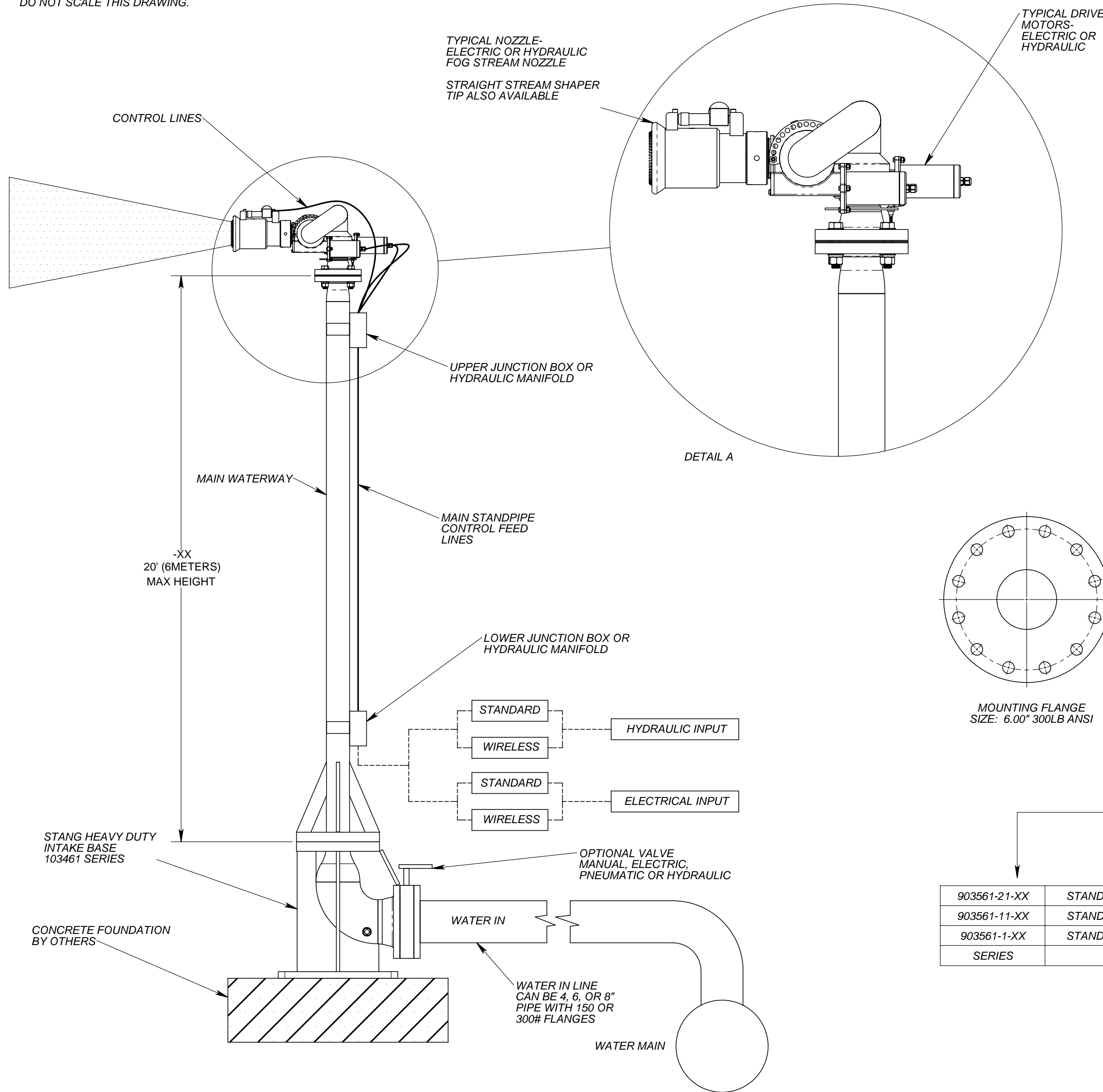


NOTES:
1. DO NOT SCALE THIS DRAWING.



MAX DESIGN NOZZLE THRUST IN LBS			
HEIGHT IN FEET	MODEL		
	103561-1-XX	103561-11-XX	103561-21-XX
10	552	1540	1540
13	480	1190	1190
16	415	960	960
20	353	815	815

GENERAL NOTES & COMMENTS:

THE 903561-XX STANDPIPE SYSTEM IS A FREESTANDING STANDPIPE THAT IS INTENDED FOR REMOTE CONTROL MONITORS. VARIOUS DIFFERENT TYPES OF REMOTE SYSTEMS CAN BE USED ON THESE STAND PIPES.

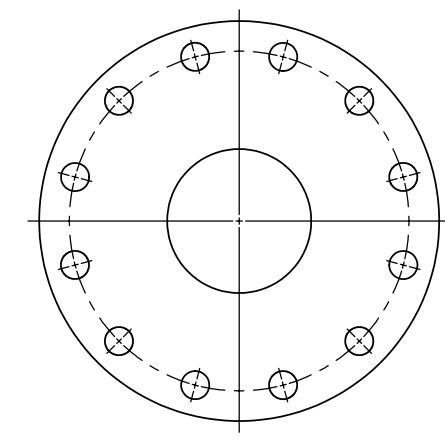
- ELECTRIC AC OR DC
 - STANDARD CONTROL
 - REMOTE WIRELESS
- HYDRAULIC
 - STANDARD CONTROL
 - REMOTE WIRELESS

THE MAXIMUM HEIGHT FOR THIS SERIES IS 20' OR 6 METERS.

THE SERIES COMES IN THREE DIFFERENT WATERWAY SIZES, 2.50", 3.00" & 4.00". THESE SIZES ARE SPECIFIED AS THE SECOND DASH NUMBER.

- 903561-1-XX = 2.50"
- 903561-11-XX = 3.00"
- 903561-21-XX = 4.00"

UNITS ARE SUPPLIED WITH GALVANIZED FINISH AND IS AVAILABLE WITH PAINT OVER GALVANIZED



MOUNTING FLANGE SIZE: 6.00" 300LB ANSI

XX IS THE HEIGHT IN FEET

SERIES	DESCRIPTION	MONITOR SIZE	MAX STANDPIPE HEIGHT
903561-21-XX	STANDPIPE,ELEVATED,4.00 X XX' FREESTANDING	4.00" (100MM)	20' (6METERS)
903561-11-XX	STANDPIPE,ELEVATED,3.00 X XX' FREESTANDING	3.00" (75MM)	20' (6METERS)
903561-1-XX	STANDPIPE,ELEVATED,2.50 X XX' FREESTANDING	2.50" (60MM)	20' (6METERS)

TYPICAL INSTALLATION



STANG INDUSTRIES INC.
1250 RAILROAD ST.
CORONA, CA 92882
WWW.STANGINDUSTRIES.COM

SALES DRAWING

STANDPIPE, ELEVATED
FREESTANDING UP TO 20'

The information and design disclosed herein is the property of Stang industries Inc. All proprietary use and sales rights thereto are reserved. This disclosure is confidential and must not be copied in whole or part.

SHEET SIZE
C

DRAWING/ PART NO. 903561sd		SCALE 1:1		SHEET 1 OF 1	
DATE 08/21/07	DRAWN EK				