

NOTES:  
 1) DO NOT SCALE THIS DRAWING  
 2) BREAK ALL SHARP EDGES

3 ALL ALUMINUM PARTS ARE HARD ANODIZED,  
 TYPE III, CLASS1 PER MIL-A-8625

### SPECIFICATIONS:

**WATER:**

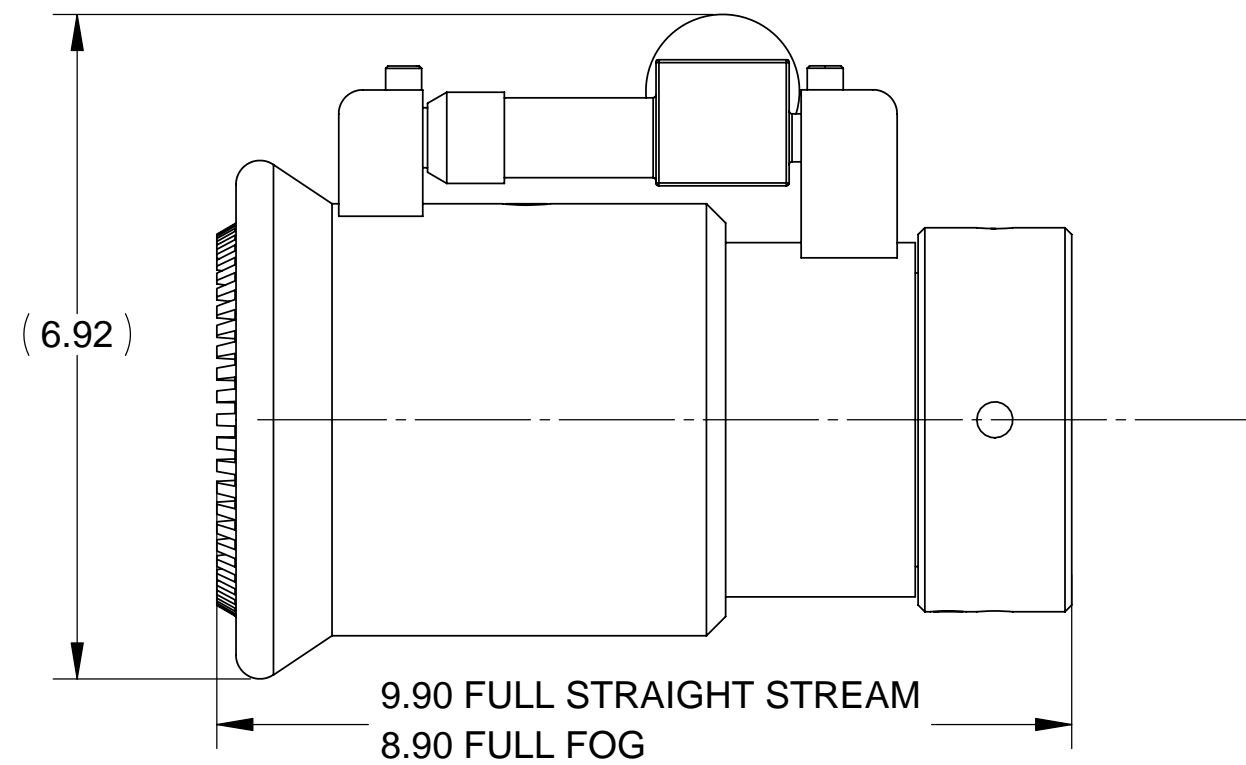
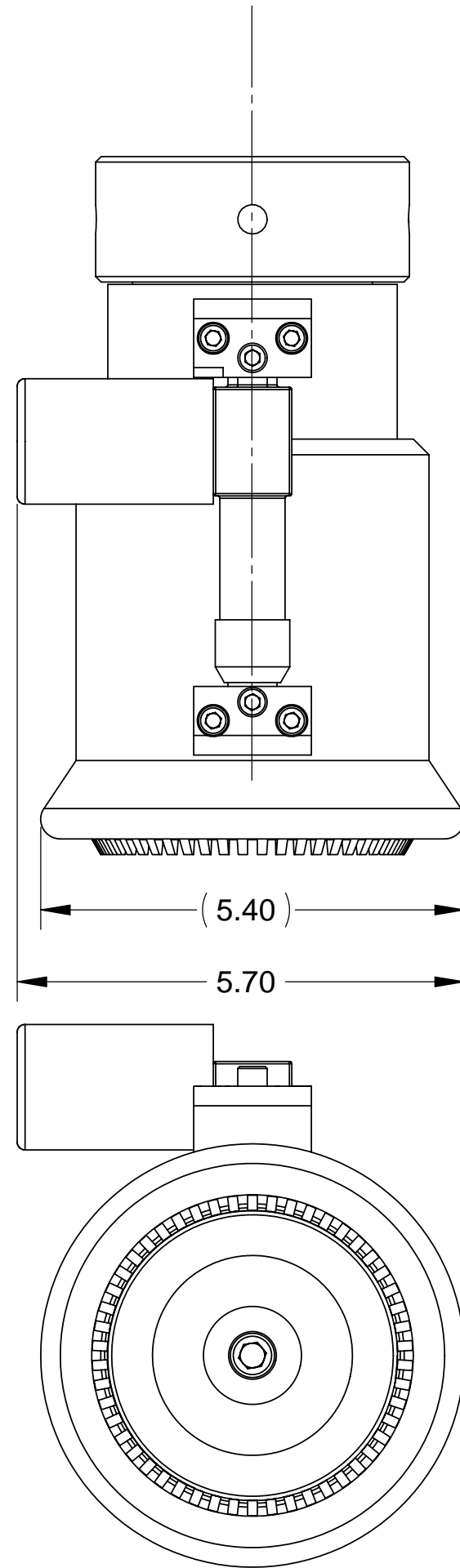
FLOW RATE: 250-1000 USGPM  
 PRESSURE RANGE: 50-150 PSI  
 OPTIMUM PRESSURE: 100PSI (INLET)  
 MAX. FOG ANGLE - 75°

**ELECTRICAL:**

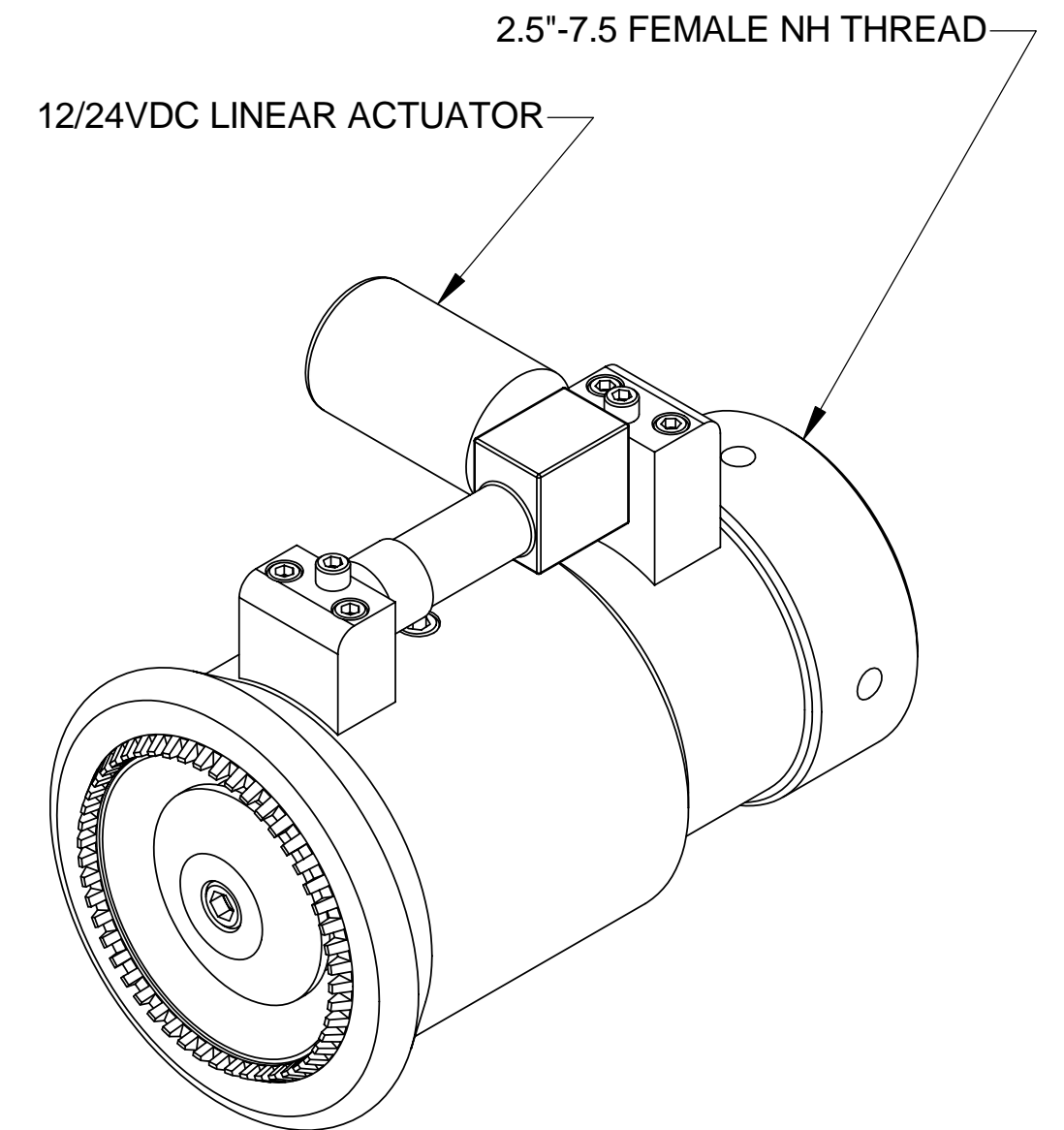
INPUT VOLTAGE: 12/24VDC  
 CONT. CURRENT DRAW @ 12 VDC: .4 AMPS  
 CONT. CURRENT DRAW @ 24 VDC: .2 AMPS  
 MAX CURRENT DRAW @ 12 VDC: 3.4 AMPS  
 MAX CURRENT DRAW @ 24 VDC: 1.7 AMPS

**MOUNTING:**

2.5" (F)NH THREADED INLET  
 UNIT WEIGHT: 26 LBS



LTR	REVISIONS	DATE	BY
A	INITIAL RELEASE	11/10/00	RBS
B	MODIFIED B.O.M.	03/09/05	RBS
C	FIXED BOM	05/08/06	EK



DASH NUMBER DEFINITIONS		
PART #	INPUT VOLTAGE	FLOW @ 100PSI
260220-12-1	12VDC	750 USGPM
260220-12-2	12VDC	500 USGPM
260220-12-3	12VDC	250 USGPM
260220-12-4	12VDC	1000 USGPM
260220-24-1	24VDC	750 USGPM
260220-24-2	24VDC	500 USGPM
260220-24-3	24VDC	250 USGPM
260220-24-4	24VDC	1000 USGPM

UNLESS OTHERWISE SPECIFIED: DIMENSIONS ARE IN INCHES  
 TOLERANCES DECIMALS ANGULAR  
 .XX ±.03 ±1°  
 .XXX ±.010  
 DO NOT SCALE DRAWING

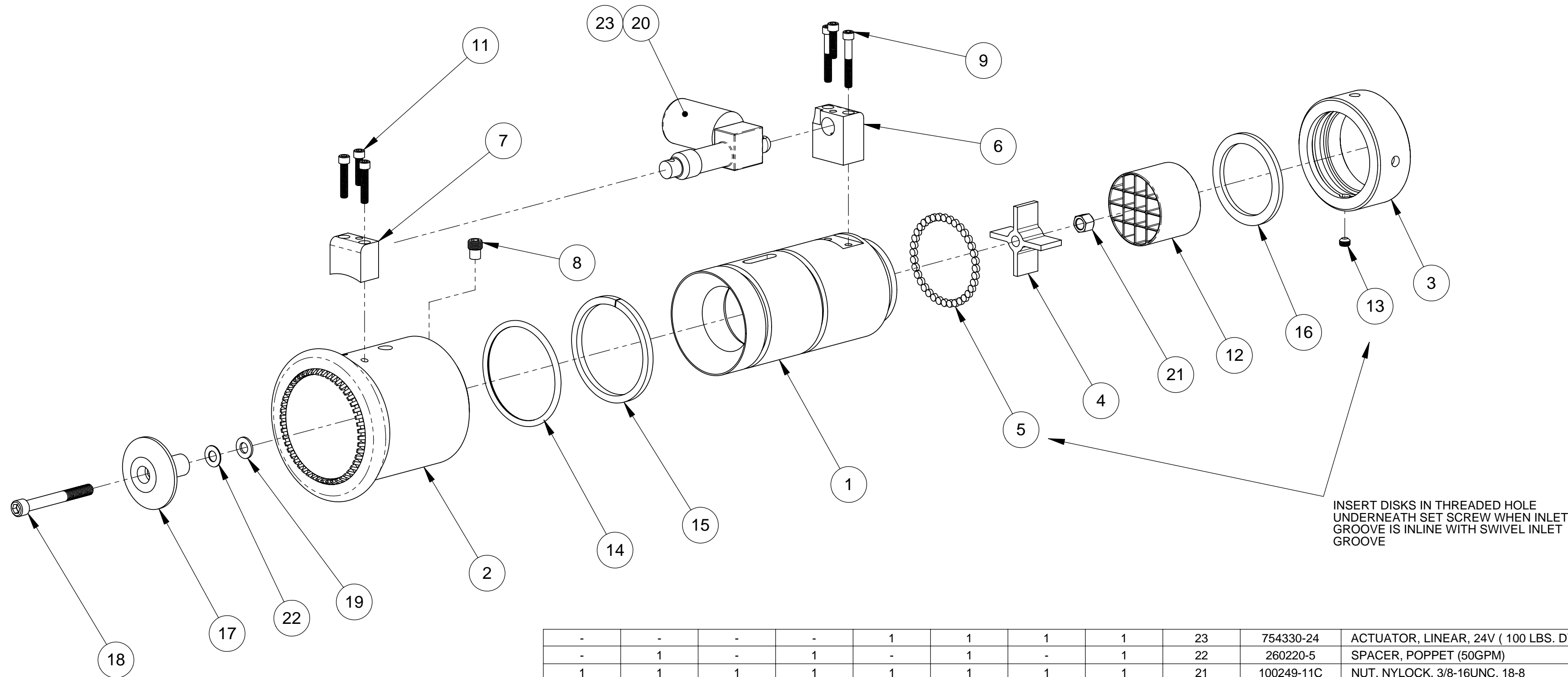


**STANG INDUSTRIES, INC.**  
 1250 RAILROAD ST.  
 CORONA, CA 92882

**NOZZLE, FOG, 12/24VDC ELECT.**  
 (250-1000 USGPM)

TREATMENT	-----		
FINISH	3		
SUPPLIER	-----		
DRAWING NUMBER	260220		
SIZE	SUPP. #	CAGE#	REVISION
C		55822	C
DATE	DESIGN	CHECK	SHEET
11/10/00			1 OF 2

The information and design disclosed herein is the property of GST Industries Inc. All proprietary use and sales rights thereto are reserved. This disclosure is confidential and must not be copied in whole or part.



-	-	-	-	1	1	1	1	23	754330-24	ACTUATOR, LINEAR, 24V ( 100 LBS. DYN.)
-	1	-	1	-	1	-	1	22	260220-5	SPACER, POPPET (50GPM)
1	1	1	1	1	1	1	1	21	100249-11C	NUT, NYLOCK, 3/8-16UNC, 18-8
1	1	1	1	-	-	-	-	20	754330-12	ACTUATOR, LINEAR, 12V ( 100 LBS. DYN.)
5	2	1	7	5	2	1	7	19	260220-6	SPACER, POPPET (100GPM)
1	1	1	1	1	1	1	1	18	104036-325C	SCREW, SHC, 3/8-16UNC X 3.25L, 18-8
1	1	1	1	1	1	1	1	17	260163-11	POPPET, 2.50" ELECTRIC NOZZLE-ALUM
1	1	1	1	1	1	1	1	16	100275-1	GASKET, 2.5", NEOPRENE
1	1	1	1	1	1	1	1	15	100209-1	SEAL, DIRT, .25SQX11.0L,MF#31-F
1	1	1	1	1	1	1	1	14	100128-339	O-RING, AS568A-339, .188W X 3.250ID X 3.625OD, BUNA-N
1	1	1	1	1	1	1	1	13	102194-1	SCREW, SET, FP, 3/8-24UNF X .25LG., BRS
1	1	1	1	1	1	1	1	12	102486-3	RECTIFIER TURB, 2.5"
2	2	2	2	2	2	2	2	11	104032-100C	SCREW, SHC, 1/4-20UNC X 1.00L, 18-8
2	2	2	2	2	2	2	2	10	104032-125C	SCREW, SHC, 1/4-20UNC X 1.25L, 18-8
2	2	2	2	2	2	2	2	9	104032-175C	SCREW, SHC, 1/4-20UNC X 1.75L, 18-8
1	1	1	1	1	1	1	1	8	260162	GUIDE SCREW, 1/2-20 CRES
1	1	1	1	1	1	1	1	7	260220-4	PEDESTAL, FRONT ACT'R MOUNTING
1	1	1	1	1	1	1	1	6	260220-3	PEDESTAL, REAR ACT'R MOUNTING
36	36	36	36	36	36	36	36	5	100349-1	DISC, .25 X .125 LG. AL-BRZ
1	1	1	1	1	1	1	1	4	104378-11	SUPPORT, 2.50" NOZZLE CROSS-ALUM
1	1	1	1	1	1	1	1	3	260151	SWIVEL INLET, 2.50-7.5NH(F)-ALUM
1	1	1	1	1	1	1	1	2	260220-1	BODY, 2.50" ELECTRIC FOG NOZZLE-ALUM
1	1	1	1	1	1	1	1	1	260220-2	INLET, 2.50" ELECTRIC FOG NOZZLE-ALUM
-12-1 QTY	-12-2 QTY	-12-3 QTY	-12-4 QTY	-24-1 QTY	-24-2 QTY	-24-3 QTY	-24-4 QTY	ITEM NO.	PART NUMBER	DESCRIPTION

UNLESS OTHERWISE SPECIFIED: DIMENSIONS ARE IN INCHES TOLERANCES DECIMALS ANGULAR .XX ±.03 ±1° .XXX ±.010 DO NOT SCALE DRAWING



**STANG INDUSTRIES, INC.**

1250 RAILROAD ST.  
CORONA, CA 92882

**NOZZLE, FOG, 12/24VDC ELECT.**  
(250-1000 USGPM)

TREATMENT -----

FINISH **SHEET 1**

SUPPLIER -----

SIZE SUPP. #

**C**

DRAWING NUMBER	<b>260220</b>	CHECK	REVISION	<b>C</b>
CAGE#	<b>55822</b>	DRAWN	<b>RBS</b>	SHEET
DATE	<b>11/10/00</b>	DESIGN	SCALE	<b>1:3</b>
				<b>2 OF 2</b>

The information and design disclosed herein is the property of GST Industries Inc. All proprietary use and sales rights thereto are reserved. This disclosure is confidential and must not be copied in whole or part.