

- NOTES:  
 1) DO NOT SCALE THIS DRAWING  
 2) REMOVE ALL BURRS AND SHARP EDGES  
 3) ALL DIMENSIONS DISPLAYED IN PARENTHESES ARE FOR REFERENCE ONLY

### SPECIFICATIONS

FLOW:  
 FLOW RATE: 250-1250 USGPM  
 PRESSURE LOSS: 8PSI @ 750 USGPM

PELTON WHEEL:  
 FLOW RATE: 8 USGPM  
 SPEED: 1725 RPM

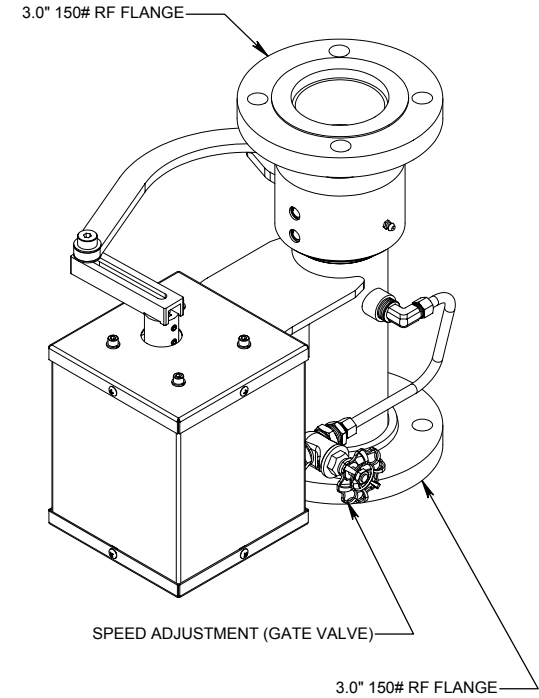
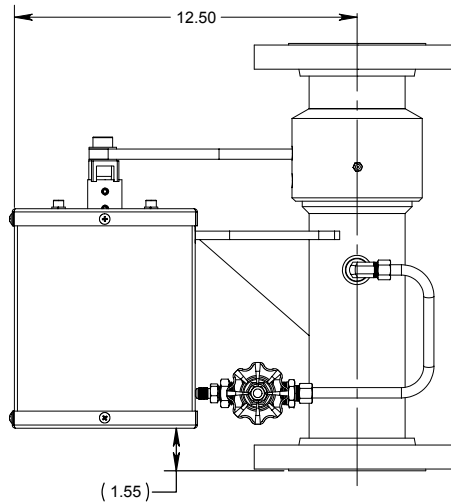
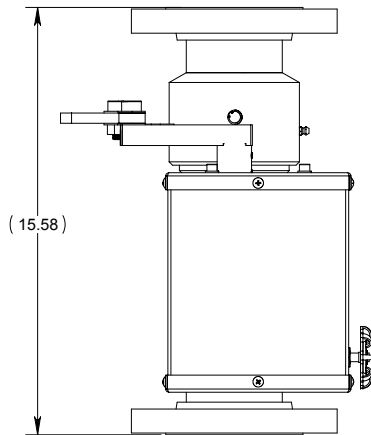
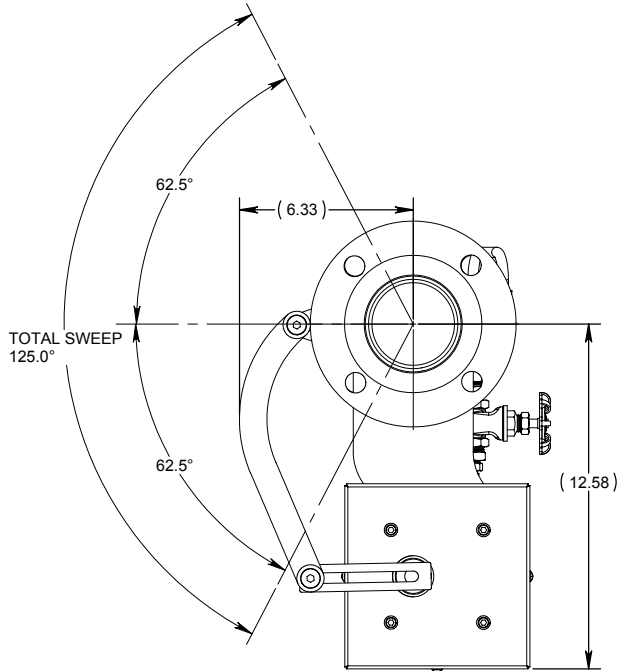
SWEEP:  
 TOTAL SWEEP ANGLE: 125°  
 (ADJUSTABLE)

SPEED:  
 OSCILLATION SPEED: 5.5 CYCLES/MIN.  
 (ADJUSTABLE)

MOUNTING:  
 INLET/OUTLET: 3.0" 150# FF FLANGE

MATERIALS:  
 WATERWAY: 304 STAINLESS STEEL  
 FLANGES: 304 STAINLESS STEEL  
 PELTON WHEEL: BRASS  
 SWIVELS: ALUMINUM BRONZE  
 COVER ASS'Y: 304 STAINLESS STEEL

UNIT WEIGHT: 42 LBS



UNLESS OTHERWISE SPECIFIED: DIMENSIONS ARE IN INCHES  
 TOLERANCES  
 DECIMALS ANGULAR  
 .XX ±.03 ±1°  
 .XXX ±.010  
 DO NOT SCALE DRAWING



**STANG INDUSTRIAL PRODUCTS**  
 DIV. OF GST INDUSTRIES  
 16692 BURKE LN.  
 HUNTINGTON BEACH, CA 92647

### OSCILLATOR, WATER, 3-150#RF X 3-150#RF

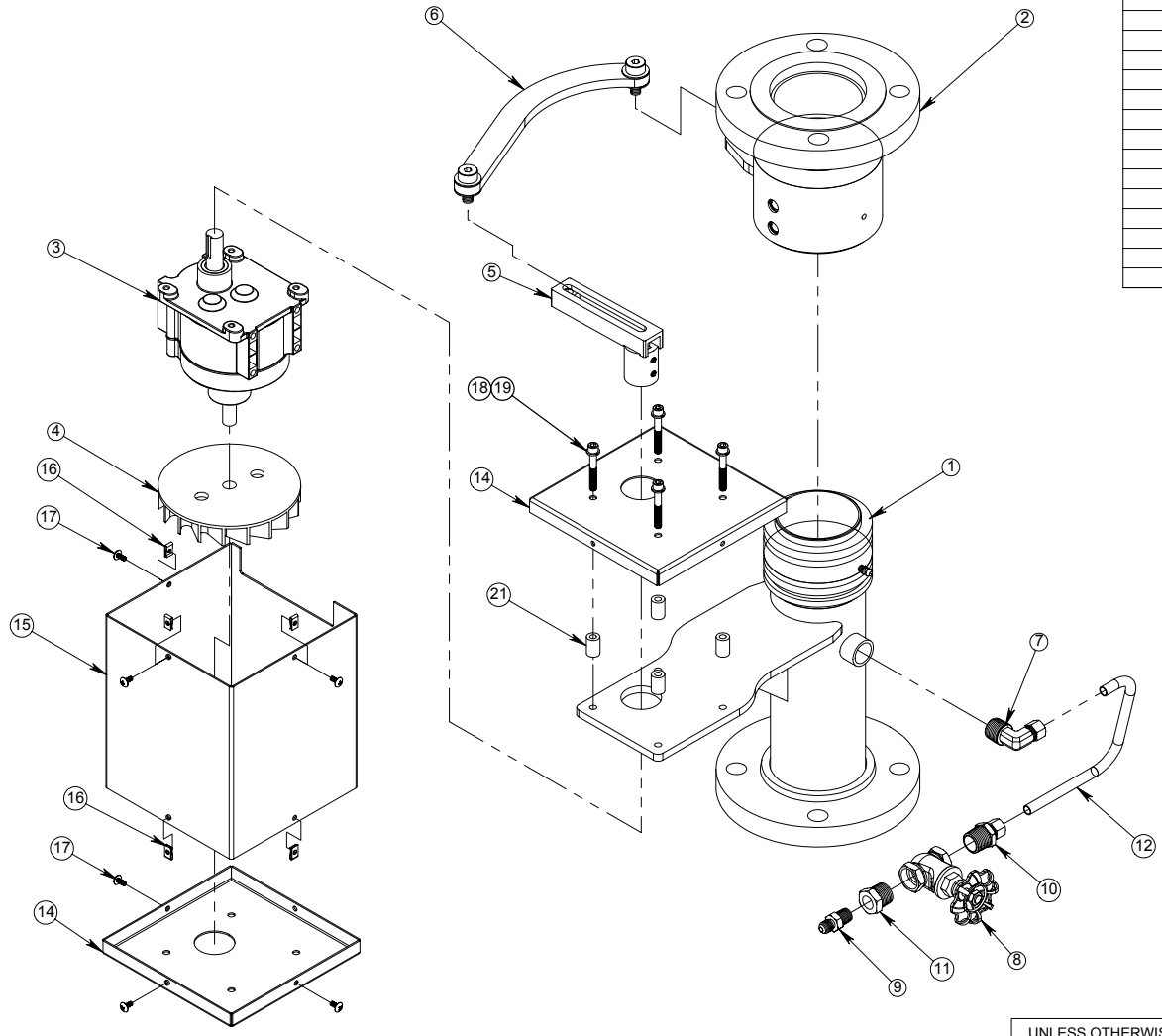
TREATMENT	NEW PART NUMBER <b>105425-151</b>			
FINISH	CAGE# <b>55822</b>	DRAWN <b>RBS</b>	CHECK	REVISION
SUPPLIER	DATE <b>11/8/2002</b>	DESIGN	SCALE <b>1:3.5</b>	SHEET <b>1 OF 2</b>
SIZE	SUPP. #			

LTR	REVISIONS	DATE	BY

The information and design disclosed herein is the property of GST Industries Inc. All proprietary use and sales rights thereto are reserved. This disclosure is confidential and must not be copied in whole or part.

**C**

NOTES:  
 1) DO NOT SCALE THIS DRAWING  
 2) REMOVE ALL BURRS AND SHARP EDGES  
 3) ALL DIMENSIONS DISPLAYED IN PARENTHESES  
 ARE FOR REFERENCE ONLY



ITEM NO	QTY	PART NO.	DESCRIPTION
1	1	105555-201	BASE LWR WELDMENT, 3.0" NOM., CRES-AB
2	1	105555-171	BASE UPR WELDMENT, 3.0" NOM., CRES-AB
3	1	105537-21L	SPEED REDUCER, (329:1 RATIO)
4	1	105726-21	PELTON WHEEL, 5.25" DIA., BRASS
5	1	105502-1	DRIVE ARM ASSY, OSCILLATOR
6	1	105562-101	LINK ASSEMBLY
7	1	50915K725	ADAPTER, 90°, 1/2NPT(M) - 3/8TUBE BRASS
8	1	100239-1	GATE VALVE, .50 NPT (F)
9	1	4-4FTX-B	ADAPTER, 1/4"NPT(MALE) - 7/16"JIC (MALE) BRASS
10	1	50915K325	ADAPTER, STR, 1/2NPT(M) - 3/8 TUBE BRASS
11	1	50785K65	ADAPTER, 1/2NPT(MALE) - 1/4NPT(FEMALE) BRASS
12	1	890900-11	TUBE, WATER DELIVERY
13	1	100112-8	FITTING, ZERK, STR, 1/4-28UNF, CRES
14	2	315009-1	LID, COVER ASS'Y, 304
15	1	315009-2	SIDE, COVER ASS'Y, 304
16	6	105542-1	U-NUT, 8-32UNC CRES
17	6	91770A192	SCREW, TRUSS, #8-32X.375LG. CRES
18	4	92196A330	SCREW, SHC, 1/4-28UNF X 1.75LG., 18-8
19	4	103109-10	WASHER, LOCK, 1/4 NOM.CRES
20	1	103830-1	SWIVEL KIT, 3.0 NOM.
21	4	92510A767	SPACER, .500D X .252ID X .75LG. ALUM

UNLESS OTHERWISE SPECIFIED: DIMENSIONS ARE IN INCHES  
 TOLERANCES  
 DECIMALS ANGULAR  
 .XX ±.03 ±1°  
 .XXX ±.010  
 DO NOT SCALE DRAWING

**STANG INDUSTRIAL PRODUCTS**  
 DIV. OF GST INDUSTRIES  
 16692 BURKE LN.  
 HUNTINGTON BEACH, CA 92647

**OSCILLATOR, WATER, 3-150#FF X 3-150#FF**

NEW PART NUMBER	<b>105425-151</b>		
CAGE#	<b>55822</b>	DRAWN	<b>RBS</b>
DATE	<b>11/8/2002</b>	DESIGN	SCALE <b>1:3.5</b>
CHECK		REVISION	SHEET <b>2 OF 2</b>

LTR	REVISIONS	DATE	BY

The information and design disclosed herein is the property of GST Industries Inc. All proprietary use and sales rights thereto are reserved. This disclosure is confidential and must not be copied in whole or part.

**C**