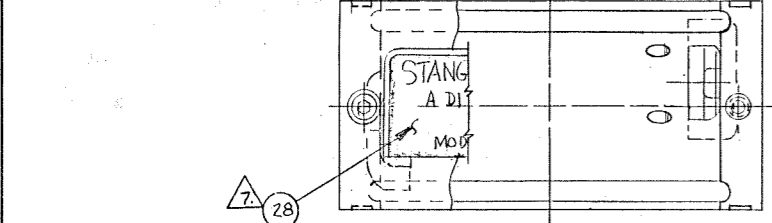
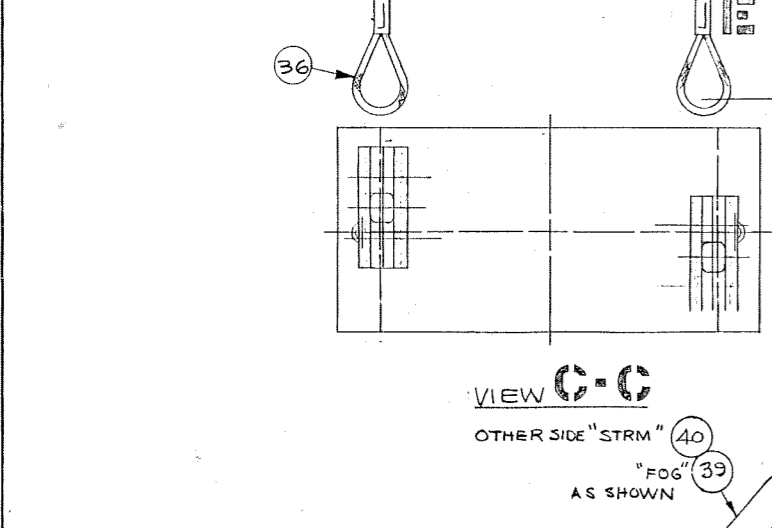
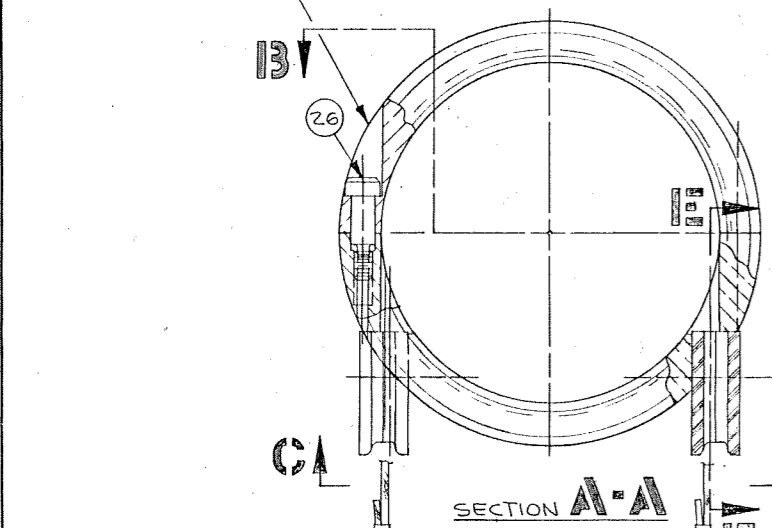


NOTES: (UNLESS OTHERWISE SPECIFIED):
 1. DO NOT SCALE THIS DRAWING.
 2. REMOVE BURRS & SHARP EDGES.
 3. IDENTIFY

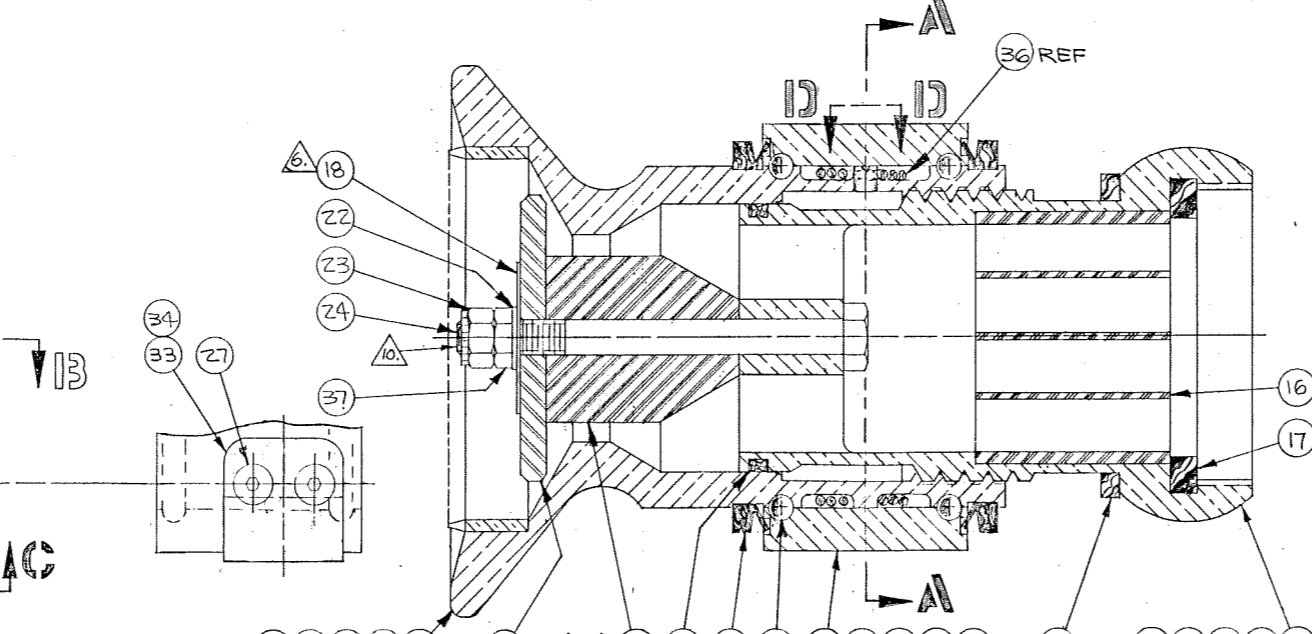
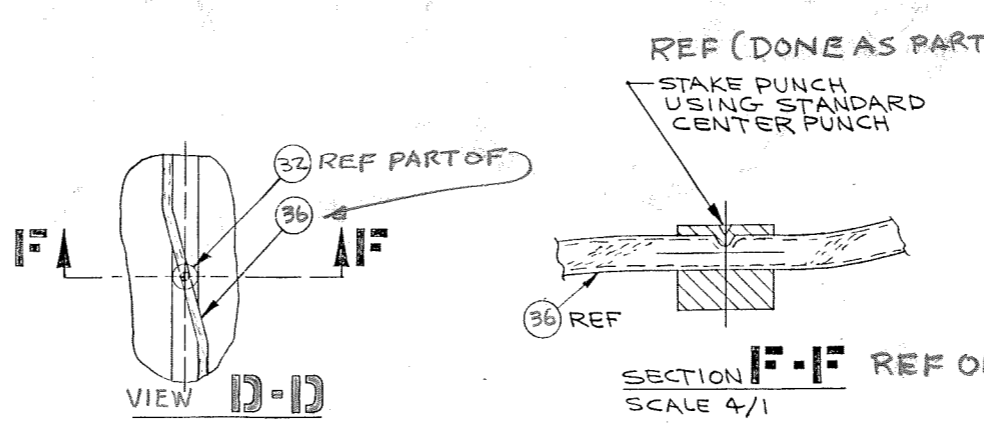
- 4. POPPET/STEM KIT USE D103729-101
- 5. SLEEVE TO BE DETERMINED BY FLOW REQUIREMENTS, SPECIFIED BY CUSTOMER (COMPUTER CODE 100790-GPM).
- 6. DATA PLATE TO BE DETERMINED BY FLOW RATE OF ASSEMBLY, USE 102381-GPM FOR COMPUTER CODE ONLY.
- 7. USE MODEL NO. PER MODEL ID. CHART BELOW OR PER %.
- 8. FOR NON SHUTOFF POPPET USE B100736-11 INSTEAD OF B100736-1.
- 9. OPERATING CABLE (LENGTH PER CUSTOMER) SUPPLIED DOUBLE (-5 FT OFF UNIT HT) LENGTH, ITEM (38) FOR FIELD INSTALLATION. HANDLES ITEMS (39), (40) INCLUDED ALONG WITH CABLE CLAMPS P100839-7, ITEM (41), REF. A104855. REF: A104833-XX REMOTE CABLE OPER. NOZ. FOR ELEV INSTALLATION: CUT CABLE IN HALF. ATTACH HANDLES TO CUT ENDS WITH CLAMP. ATTACH SNAP SWIVEL END TO NOZZLE CABLES.
- 10. DISRUPT END OF THREAD BY STAKING TO PREVENT DISENGAGEMENT.



FILL WITH WHITE SILICONE R.T.V.



SUFFIX	QTY.	NEXT ASSY.	FINAL ASSY.	END ITEM



MODEL IDENTIFICATION 4767XX-X					
MODEL LETTER SUFFIX	DESCRIPTION	FLOW RATE IN G.P.M.	SLEEVE REQ'D	NAMEPLATE REQ'D	
AC	AS CAST	-1	1000	B100790-1	B102381-6
		-2	750	B100790-2	B102381-5
PB	POLISHED BRONZE	-2A	600	B100790-2A	B102381-7
		-3	500	B100790-3	B102381-5
TC	AS CAST AND TEFLON COATED	-3A	400	B100790-3A	B102381-7
		-4	350	B100790-4	B102381-3
NP	AS CAST AND NICKEL PLATED	-5	250	B100790-5	B102381-2
		-6	200	B100790-6	B102381-1
CP	POLISHED AND CHROME PLATED				

PART NO. EXAMPLE: D104767 AC -1
 AS CAST 1000 GPM

PROPRIETARY INFORMATION
 The information and design disclosed herein is the property of Stang Manufacturing Group. All Proprietary, use and sales rights thereto are reserved. This disclosure is confidential and must not be copied in whole or part.

LTR	REVISIONS	DATE	BY
A	ADDED ITEM (38), (39), (40), (41) & NOTE (4)	9-28-90	AWM
B	ADDED ITEM (42) SPARES KIT A104898-1	11-9-90	C.F.S.
C	ITEM (26) WAS P/N P104861-2 STEEL, ITEM (39) WAS P/N -3	4-2-91	GH
D	DELETED NOTE (4) & ITEM (28)	1-10-92	AWM
E	ADDED NOTE (10); REUSED ITEM (29) NO. & NOTE (2)	9-23-92	AWM
F	DELETED ITEM (19) WAS P/N 101809-9. ITEM (24) WAS 4.0LG.	6-17-94	GH
G	ITEM (25) WAS: NITRILE MATL	2-13-95	AWM
H	SEE FULL SIZE	11-29-95	AWM

1	1	1	1	1	B100275-1	42	GASKET, BUMPER, .19 THK
1	1	1	1	1	C104724-2	40	HANDLE, 'STRM'
1	1	1	1	1	C104724-1	39	HANDLE, 'FOG'
1	1	1	1	1	A104855-1	38	CABLE ASSY, OPERATING
1	1	1	1	1	P102980-3	37	JAM NUT, HEX, 3/8-16UNC. REF: CRES
1	1	1	1	1	B104338-1	36	CABLE ASSY COATED CRES, 3/32 Ø X 12' LG
DELETED	2	2	2	2	P100839-4	35	SLEEVE, N-TYPE COMPRESSION, COPPER/ZINC PLATE
2	2	2	2	2	C104771-2	34	CABLE GUIDE W/CSINK REF: NYLATRON
2	2	2	2	2	C104771-1	33	CABLE GUIDE W/O CSINK REF: NYLATRON
						32	
1	1	1	1	1	B100790-GPM	31	SLEEVE
REF	REF	REF	REF	REF	B100736-11	30	POPPET, NON-SHUTOFF (WHEN SPEC'D ONLY)
1	1	1	1	1	B100736-1	29	POPPET, SHUTOFF
1	1	1	1	1	B100853-3	28	NAME PLATE (REF M/F -1 PLATE)
4	4	4	4	4	P104869-16	27	FLAT HEAD SOC. SCREW, 10-24 X 3/4 CRES
2	2	2	2	2	P104868-3	26	SCREW, SKT. SHLD., #10-24 THD. X 1/4 Ø X 1/2' LG. CRES.
2	2	2	2	2	P104866-1	25	V-SEAL A (V-90A) POLYURETHENE
1	1	1	1	1	P102473-425C	24	BOLT, HEX HEAD, 3/8-16UNC X 4.25L REF: CRES
1	1	1	1	1	P100249-11	23	LOCKNUT, 3/8-16 (GREER TYPE) REF: CRES
1	1	1	1	1	P101715-38L	22	WASHER, 3/8" NOM.
1	1	1	1	1	P100128-Q230	21	QUAD RING
88	88	88	88	88	P100083-16	20	BALL, 250 Ø, GRADE 500 OR BETTER REF: CRES
						19	DELETED
1	1	1	1	1	B102381-GPM	18	DATA PLATE
1	1	1	1	1	B100275-1	17	GASKET, 2.5" Ø NOM., .19 THK REF: BUNA-N
1	1	1	1	1	C102486-3	16	GRID, STREAM SHAPER
1	1	1	1	1	D104769-CP	15	OUTER RACE, CHROME PLATED (MATCH HALFS)
1	1	1	1	1	D104769-NP	14	OUTER RACE, NICKEL PLATED (MATCH HALFS)
1	1	1	1	1	D104769-TF	13	OUTER RACE, TEFLON COATED (MATCH HALFS)
1	1	1	1	1	D104769-PB	12	OUTER RACE, POLISHED BRONZE (MATCH HALFS)
1	1	1	1	1	D104769-1	11	OUTER RACE, (MACHINED) (MATCH HALFS)
1	1	1	1	1	D104872-CP	10	INLET, POLISHED, CHROME PLATED
1	1	1	1	1	D104872-NP	9	INLET, AS CAST, NICKEL PLATED
1	1	1	1	1	D104872-TF	8	INLET, AS CAST, TEFLON COATED
1	1	1	1	1	D104872-PB	7	INLET, POLISHED BRONZE
1	1	1	1	1	D104872-AC	6	INLET, AS CAST, MACHINED
1	1	1	1	1	D104768-CP	5	BODY, POLISHED, CHROME PLATED W/RING
1	1	1	1	1	D104768-NP	4	BODY, AS CAST, NICKEL PLATED W/RING
1	1	1	1	1	D104768-TF	3	BODY, AS CAST, TEFLON COATED W/RING
1	1	1	1	1	D104768-PB	2	BODY, POLISHED BRONZE W/RING
1	1	1	1	1	D104768-2	1	BODY, AS CAST (MACHINED) W/RING

MATCHED SETS, 1/2-2

STANG HYDRONICS INC.
MANUFACTURING GROUP
 ORANGE, CALIFORNIA CODE IDENT. 13189

2.5" FOG NOZZLE, CABLE OPERATED
 (D103729 MODIFIED) WT: 15 LBS

HEAT TREAT: _____
 PROTECTIVE FINISH: NOTED

DATE 7/30/90 STANG HYDRONICS INC. PROJ. NO. 0165 SHEET 1 OF 1
 SCALE 1/1 DESIGN D.L.G. CHECKED _____ DRAWING NO. D104767 H

SPARES KIT MARK'D
 * A104898-1
 * D103729-101
 POPPET KIT

0 = A104281-1
 COMP. REPAIR KIT

REDUCED SIZE COPY