

LTR	REVISIONS	DATE	BY

NOTES:

- 1) DO NOT SCALE THIS DRAWING
- 2) ALL DIMENSIONS DISPLAYED IN PARENTHESES ARE FOR REFERENCE ONLY

3) NH ALSO KNOWN AS NST, NSFT, NSFHT.

4) FLOW RATES AS LISTED

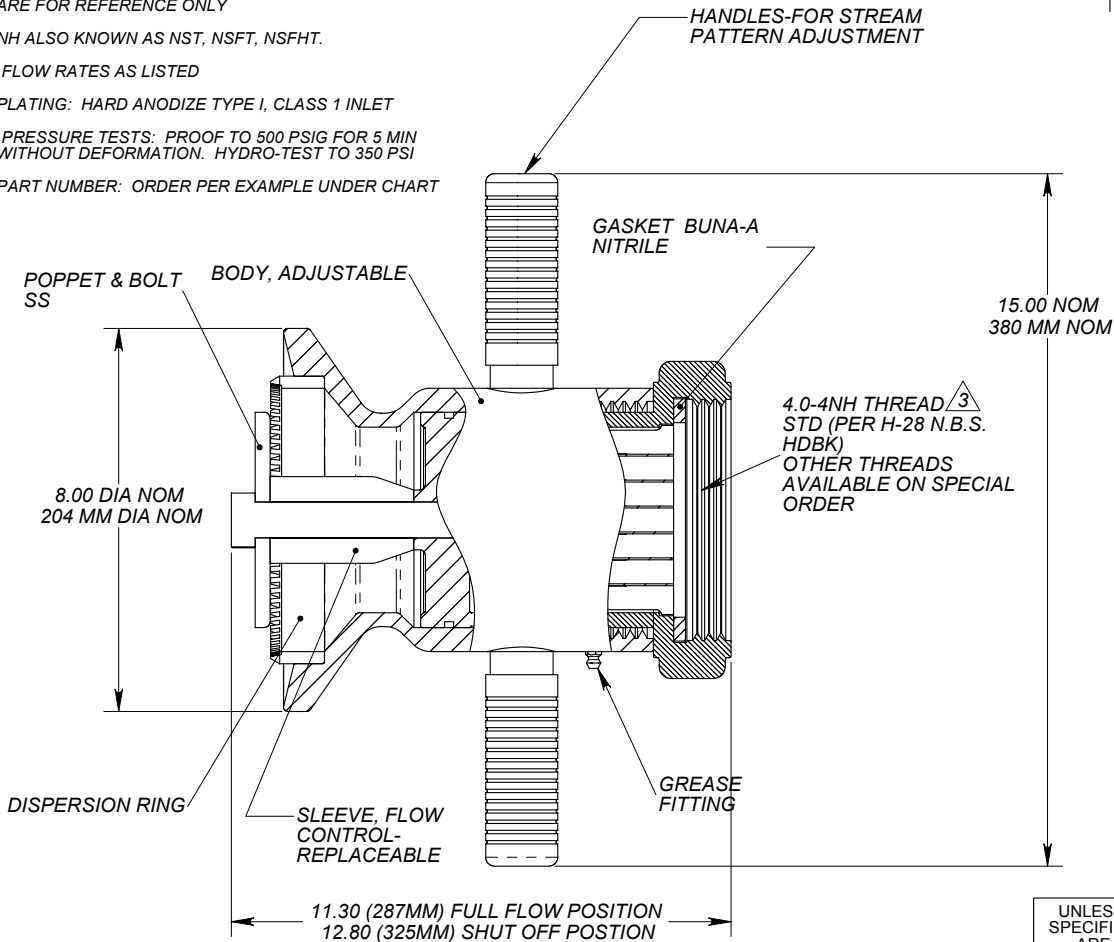
5) PLATING: HARD ANODIZE TYPE I, CLASS 1 INLET

6) PRESSURE TESTS: PROOF TO 500 PSIG FOR 5 MIN WITHOUT DEFORMATION. HYDRO-TEST TO 350 PSI

7) PART NUMBER: ORDER PER EXAMPLE UNDER CHART

MODEL DESCRIPTION	
MODEL NO.	FINISH, PLATE, ETC.
4316AC-X	AS CAST
4316HA-X	HARD & CHROMIC ANODIZED PER NOTE 5
4316TC-X	TEFLON COATED

X= SUFFIX DESCRIPTION	
MODEL SUFFIX	FLOW RATE IN US GPM @ 100 PSI
-1	3000
-2	2750
-3	2500
-4	2250
-5	2000
-6	1750
-7	1500
-8	1200
-9	1000



7) PART NUMBER DEFINED:
EXAMPLE: 104316HA-3
 BASE NUMBER → HARD ANODIZE → 2500 GPM

UNLESS OTHERWISE SPECIFIED: DIMENSIONS ARE IN INCHES TOLERANCES DECIMALS ANGULAR .XX ±.03 ±2° .XXX ±.010 DO NOT SCALE DRAWING

STANG STANG INDUSTRIAL PRODUCTS
 A DIVISION OF GST INDUSTRIES
 16692 BURKE LN.
 HUNTINGTON BEACH, CA 92647

NOZZLE, 4.00" MANUAL FOG

TREATMENT	N/A	PART#	104316		REF PART #	B			
FINISH	SEE NOTES	CAGE	55822	DRAWN	EK	CHECK	N/A	REVISION	B
NOTE		DATE	10.20.03	DESIGN	N/A	SCALE	N/A	SHEET	1 OF 1

The information and design disclosed herein is the property of GST Industries Inc. All proprietary use and sales rights thereto are reserved. This disclosure is confidential and must not be copied in whole or part.