

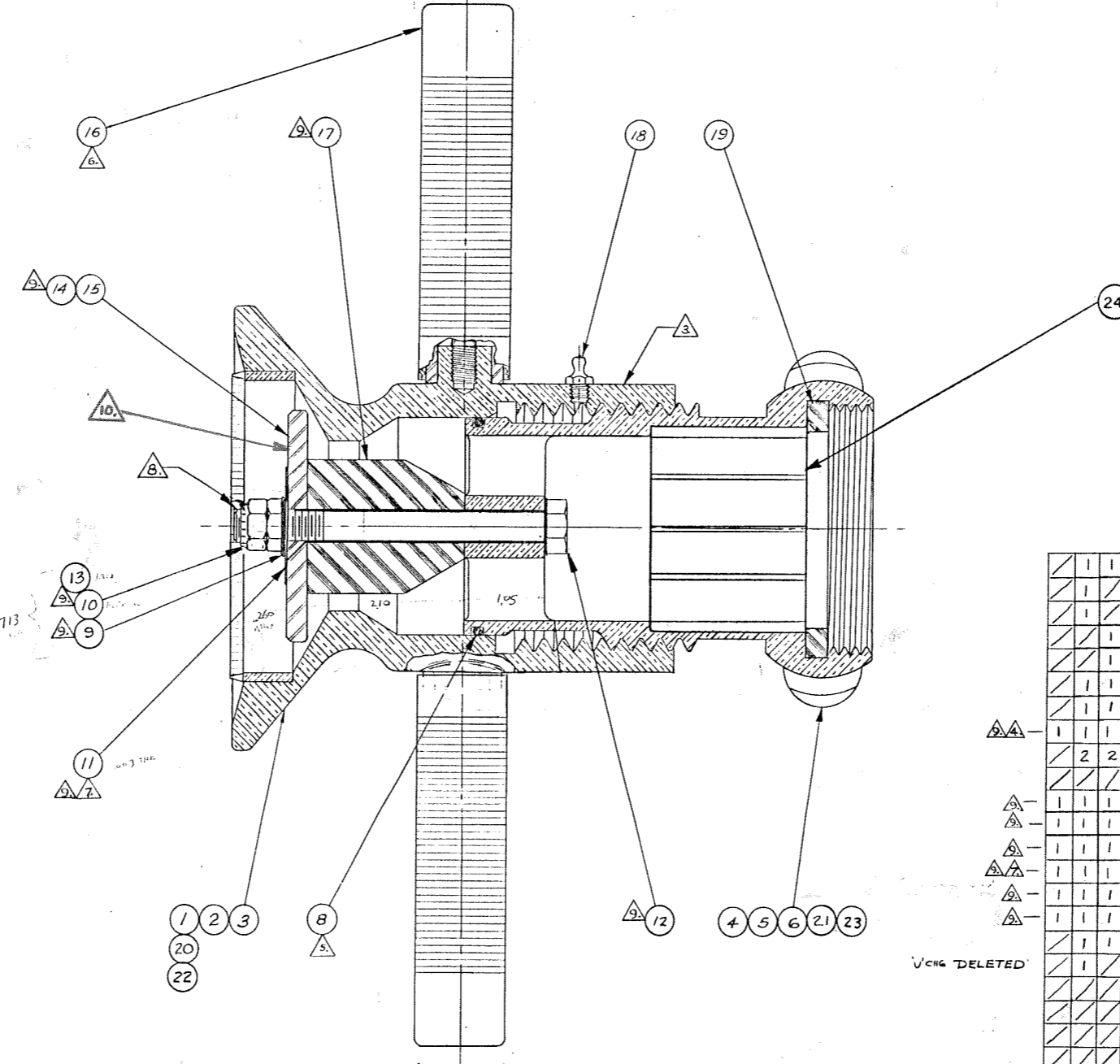
- NOTES: (UNLESS OTHERWISE SPECIFIED):
- DO NOT SCALE THIS DRAWING.
 - REMOVE BURRS & SHARP EDGES.
 - IDENTIFY: IMPRESSION STAMP WITH MODEL NUMBER AND APPLICABLE SUFFIX IN .19 HIGH CHARACTERS. EXAMPLE: 3729-ACNS-6 SEE TABULATION BLOCK.
 - SLEEVE TO BE DETERMINED BY FLOW REQUIREMENTS, SPECIFIED BY CUSTOMER. USED 100790-GPM FOR COMPUTER CODE ONLY!
 - LUBRICATE O-RINGS AT TIME OF ASSEMBLY WITH A GOOD GRADE OF SILICON GREASE.
 - SHRINK FIT PER A104508 - DELETED! V'CHG
 - NAMEPLATE TO BE DETERMINED BY FLOW RATE OF ASSEMBLY. USED 102381-GPM FOR COMPUTER CODE ONLY!
 - LAST AVAILABLE THREAD TO BE WELL STAKED TO PREVENT DISENGAGEMENT.
 - 101 POPPET/STEM KIT: CONSISTS OF ITEMS MARKED 9.
- CUSTOMER TO SPECIFY GPM WHICH WILL DETERMINE SLEEVE DIA ITEM 17 & NAMEPLATE ITEM 11.

REF: A105440-1 POPPET SEAL (DISK) TB-31
 VCN 103729AC-3L
 A105441-1 KIT, SEAL

LTR	REVISIONS	DATE	BY
A	REVERTED TO OLD BODY.	3-26-75	J.P.C.
B	ADDED ITEM 20, GRID	2-19-76	C.W.H.
C	ITEM 20 (GRID) REMOVED	9-22-76	N.D.W.
D	ITEM 8 WAS PARTIAL O-RING P/N N674-70-230	23 DEC 76	EDA
E	CHANGED MODEL I.D.	30 APR 77	EDA
F	ITEM 12 WAS: SHOULDER BOLT; ITEM 13 WAS: -112 O-RING. CHG'D DWG PICTORIALY	3/28/78	B.W.M.
G	ITEM 10 WAS: -10 CRES GREER LOCKNUT	10-2-79	B.W.M.
H	-2A WAS: -3; -3 WAS: -4; -3A WAS: -5; -4 WAS: -6; -5 WAS: -7. ADDED -6 (200GPM). MADE B100790 - MATCH ABOVE	12/28/79	B.W.M.
J	ITEM'S 9, 10 & 12 LOCATION REVERSED. NOTE 8 ADDED. (CENTER 20LT & HDW)	9-17-80	B.W.M.
K	ITEM 9 & 12 WAS: AN 960-C616L -12 RESP (STREEL)	1-27-82	B.W.M.
L	ADDED -TF, TFNS & ITEM'S 20, 21 ITEM 7 WAS -3	7-14-83	B.W.M. OBS
M	ADDED-GPM COMPUTER CODE TO ITEMS 11, 17; NOTES A, A.	3-14-85	C. OGLE OBS
N	ITEM 13 WAS N674-70-110	3-18-85	OGLE
P	ADDED "NP" NICKEL PLT VERSION & ITEMS 22, 23	4-11-85	B.W.M. OBS
Q	PER DCR 1009 ITEM 19 ON SH'S 2 WAS B100275-4 NOW -1 BUNA-N	5-16-85	B.W.M. OBS
R	ADDED -101 KIT, NOTE 8 MADE UP OF ITEMS 9, 10 & 12. ITEM 9 WAS P101715-38CL. NOTE 8 ADDED	3-24-86	B.W.M. OBS
S	CHD'D NOTE 8 DELETED ITEM 13 O-RING ADDED ITEM 24	12-28-88	E.O. OBS
T	ADDED ITEM 13, ITEM 18 WAS -2 NOW -8	9-5-90	B.W.M. OBS
U	DELETED ITEM 7 & NOTE 8	1-16-92	B.W.M. OBS
V	ITEM 12 WAS: 4.00 LONG	9-22-92	B.W.M. OBS
W	ITEM 12 WAS 4.25 LG.	2-17-94	GH

MODEL LETTER SUFFIX	DESCRIPTION	FLOW RATE SUFFIX	FLOW IN G.P.M.	SLEEVE REQ'D.	NAMEPLATE REQ'D.
-PB	POLISHED BRASS	-1	1000	B100790-1	B102381-6
-CP	CHROME PLATED & POLISHED	-2	750	B100790-2	B102381-5
-AC	AS CAST	-2A	600	B100790-2A	B102381-7
-ACNS	AS CAST NON-S.O. TEFLON COATED	-3	500	B100790-3	B102381-4
-TFNS	AS CAST & TEFLON COATED	-3A	400	B100790-3A	B102381-7
-TC	AS CAST & TEFLON COATED	-4	350	B100790-4	B102381-3
-NP	AS CAST & ELECTROLESS NICKEL PLT	-5	250	B100790-5	B102381-2
		-6	200	B100790-6	B102381-1

SEE DWG FOR OTHER GPM'S



PART No. EXAMPLE: D103729NP-1
 1000 GPM NICKEL PLATE (ELECTROLESS)
 MIL-C-26074
 CL 1, EDA

QTY	QTY	QTY	QTY	QTY	QTY	QTY	QTY	PART NO.	ITEM	INOMENCLATURE:	MATERIAL
								C102486-3	24	GRID, STREAM SHAPER	
								D103363-10	23	INLET	REF: NI PLT BRZ
								D103414-10	22	BODY	REF: NI PLT BRZ
								D103363-9	21	INLET	TEFLON COATED
								D103414-9	20	BODY W/DISPERSION RING	TEFLON COATED
								B100275-1	19	GASKET	REF: BUNA-N
								P100112-8	18	GREASE FITTING, CRES-ALEMITE HYD. 1/4-28UNF STRAIGHT	
								B100790-GPM	17	SLEEVE (NEW 2.10 LONG)	
								C103374-1	16	HANDLE ASSY.	
								B100736-11	15	POPPET NON-SHUT OFF	
								B100736-1	14	POPPET SHUT OFF	
								P102980-3	13	NUT, HEX JAM 38-16UNC	REF: CRES
								P102473-4250	12	BOLT, HEX HD .38-16UNC X4.50 LONG	REF: CRES
								102381-GPM	11	NAMEPLATE	
								P101218-8	10	LOCK NUT, .38-16UNC (FLEXLOC TYPE)	REF: CRES
								AN960C616L	9	WASHER, (THIN) - .375 NOM (REF: P101715-38CL)	REF: CRES
								P100128-230	8	O-RING NOM SIZE: 2 1/2 x 2 3/4 x 1/8	
								C103416-1	7	DISPERSION RING AS CAST (MACHINED)	
								D103363-7	6	INLET AS CAST (MACHINED)	
								D103363-5	5	INLET CHROME	
								D103363-3	4	INLET POLISHED	
								D103414-2	3	BODY AS CAST (MACHINED)	
								D103414-3	2	BODY W/DISPERSION RING CHROMED	
								D103414-3	1	BODY POLISHED	

REF NOTE: REQ'S APPROX. 3.25" FULL TURNS FROM FULL OPEN (FOG) TO SHUT OFF. B.W.M. 5/87

SPARES KIT: A104340-1 (SOFT GOODS)
 REF: ITEMS 8, 19

SUFFIX	QTY.	NEXT ASSY.	FINAL ASSY.	APPLICATION
-3		REF VCN D103729ACNS-3B		FOR CUST.

UNLESS OTHERWISE SPECIFIED		DIMENSIONS ARE IN INCHES	
TOLERANCES	ALL MACHINED SURFACES	ANGULAR ±2°	ARITHMETIC AVERAGE
X ±.1	XX ±.03	XXX ±.010	
HEAT TREAT:		14 LB APPROX. WT.	SHEET 2 OF 2
PROTECTIVE FINISH:		DATE: 8/27/94	DRAWN: @
		CHECKED: @	DESIGN: @
		SCALE: 1/2"	APPROVED: @
		DRAWING NO: D103729	REV: W

STANG HYDRONICS, INC. MANUFACTURING DIVISION
 ORANGE, CALIFORNIA CODE IDENT. 13189
 FOG NOZZLE - MANUAL
 2.50 NOM DIA

FOR PREDICTED TEMP. SEE A103729

REDUCED SIZE COPY