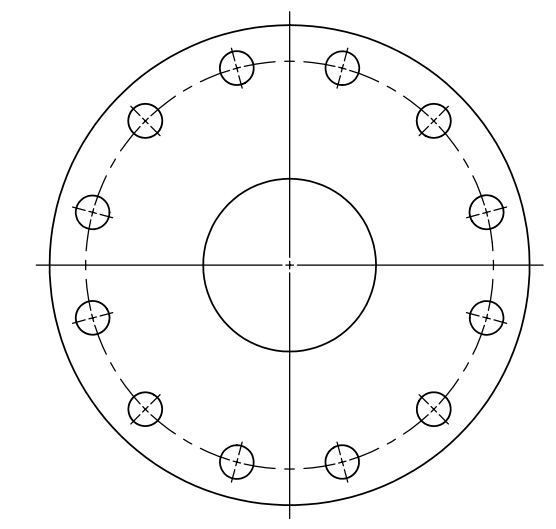
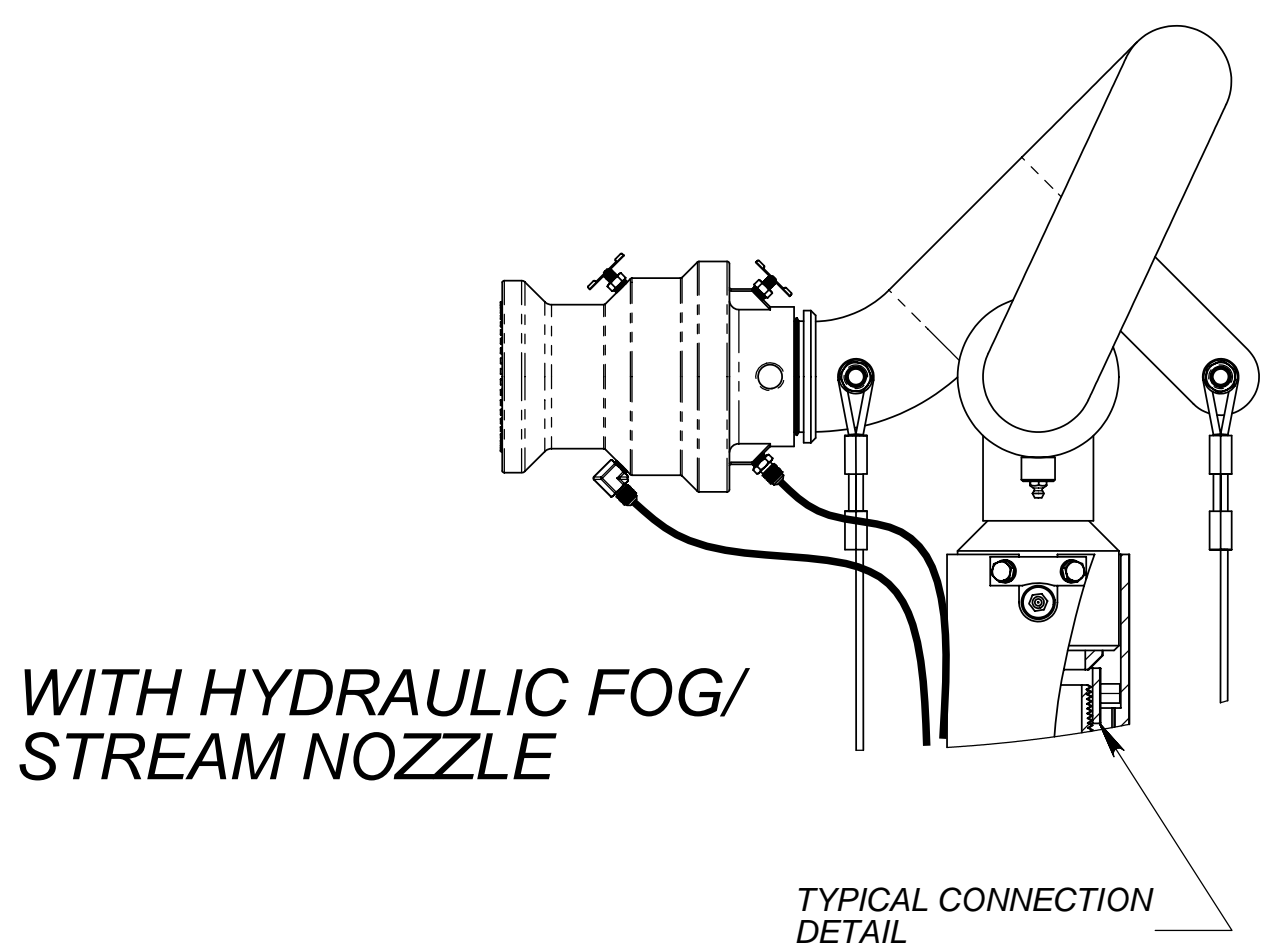
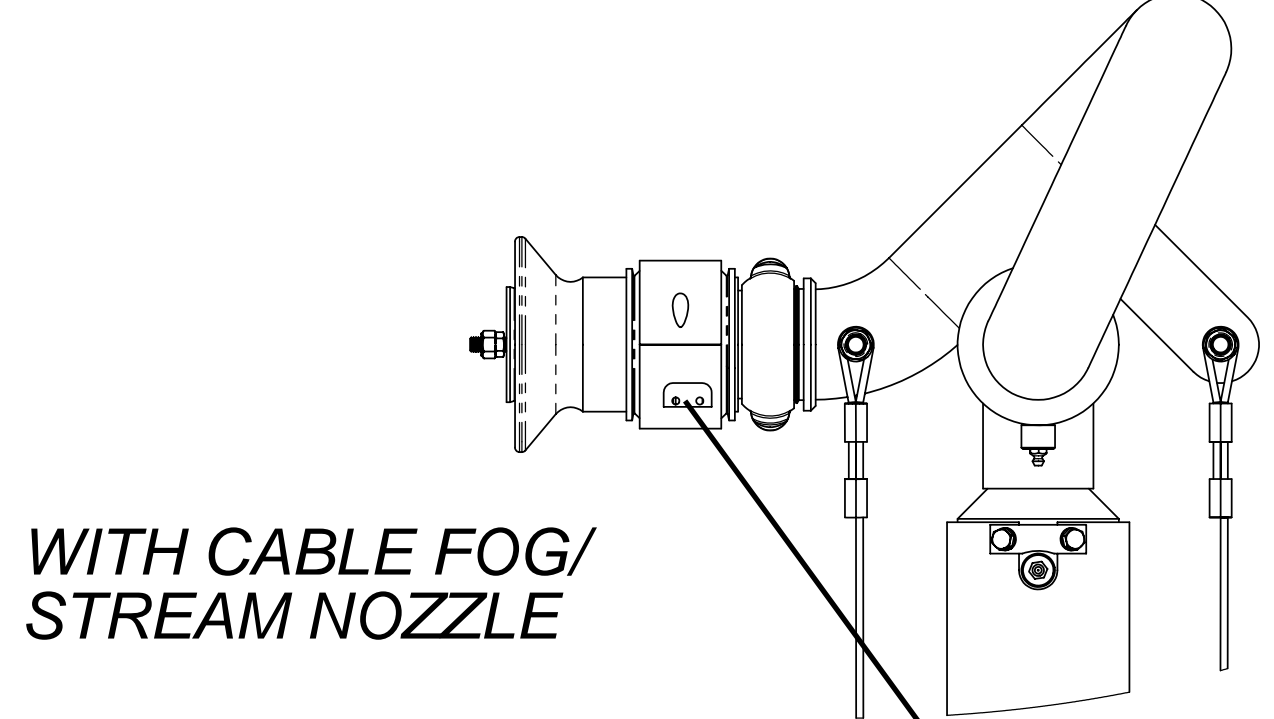
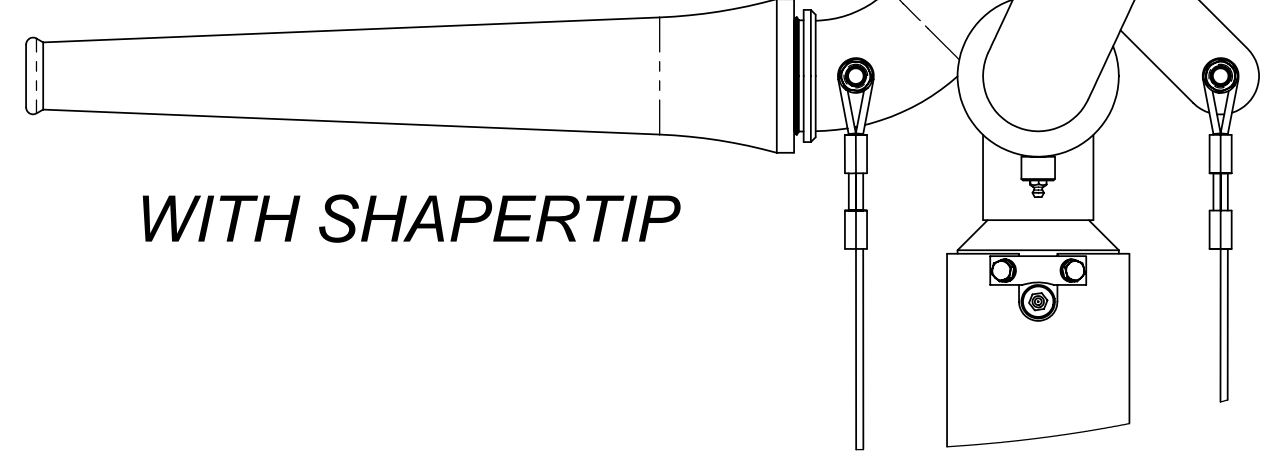
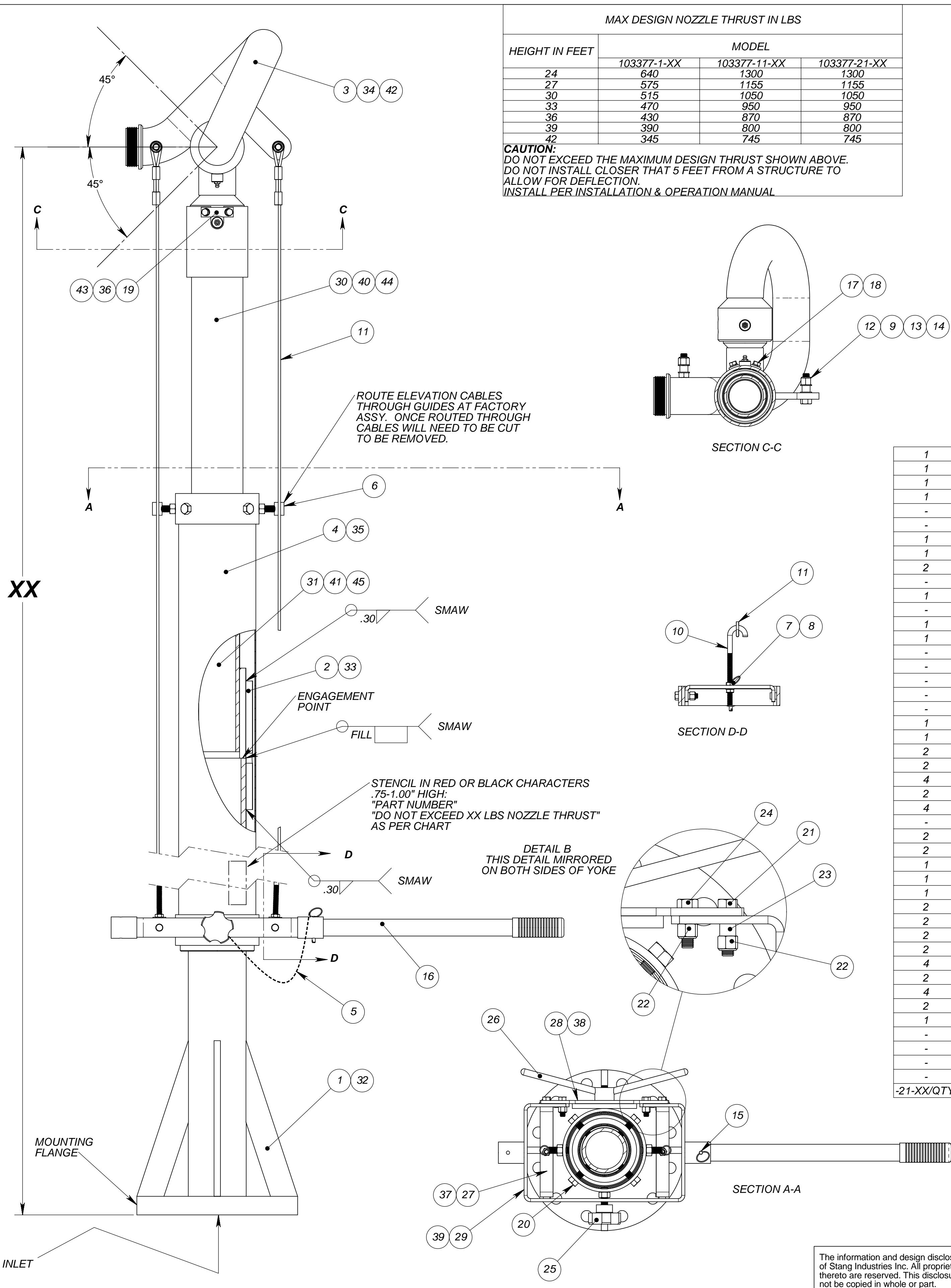


- NOTES:
- DO NOT SCALE THIS DRAWING.
 - BREAK ALL SHARP EDGES.
 - ALL DIMENSIONS DISPLAYED IN PARENTHESES ARE FOR REFERENCE ONLY.
 - MONITOR IS EPOXY COATED RED.
 - DRIVE TUBE, COLUMN, YOKE & HANDLES ARE GALVANIZED.
 - SEE O&M MANUAL FOR INSTALLATION & OPERATION.
 - LAST DASH NUMBER OF PART NUMBER "XX" IS THE HEIGHT IN FEET, AS SHOWN IN DRAWING.
 - ALL "XX" DASH NUMBER SUFFIXS IN THE BOM MUST MATCH THE DASH NUMBER SUFFIX OF THE ELEVATED MONITOR.
 - FACTORY WELD AS SHOWN. GRIND DOWN PLUG WELDS TO SURFACE LEVEL. TOUCH UP PAINT WITH GALVANIZED PAINT. UPPER AND LOWER COLUMN NEED TO BE TOUCHING AT ENGAGEMENT POINT PRIOR TO WELDING.
 - 2.50" NH THREADS ON OUTLET.
 - USE PROPER TORQUE ON ALL HARDWARE.
 - USE ANTI-SEIZE LUBRICANT ON ALL SS TO SS HARDWARE CONNECTIONS.
 - USE THREAD SEALANT AT MONITOR TO COLUMN CONNECTION.



INSTALLATION FLANGE
 -1 6X4 300#FF FLANGE
 -11 & -21 8X6 300#FF FLANGE



REVISIONS			
LTR	REVISION	DATE	BY
A-AA	SEE PREVIOUS DRAWINGS	N/A	EK
AB	MAJOR REVISION TO DRAWING; FIXED BOM	1/25/2007	EK

COMMON OPTIONS ADDITIONS	
DESCRIPTION	PART # SERIES
CABLE OPERATED FOG NOZZLE	104767-XX
SHAPER TIP	100228-XX
FOG NOZZLE	100498-XX
REMOTE SWIVEL GREASE KIT	103874
	• -21-XX (FOR -1)
	• -31-XX (FOR -11 & -21)
ELEVATION CONTROL CABLE KIT	103132-2B-XX
FOG NOZZLE CABLE/ HANDLE KIT	104825-1-XX
FOG NOZZLE CABLE BRACKET KIT	104833-X
	• -51 (FOR -1)
	• -71 (FOR -11 & -21)
GEAR PUMP INSTALL KIT (FOR HYDRAULIC FOG NOZZLE)	887700
	• -3-XX (FOR -1)
	• -4-XX (FOR -11)
	• -5-XX (FOR -21)
GEAR PUMP RETRO-FIT KIT (TO REPLACE OLD EXISTING HAND PUMP FOR HYDRAULIC FOG NOZZLE)	887700
	• -11A (FOR -1)
	• -11E (FOR -11 & -21)
ALL INTAKE BASES	103461-XX
FLANGE INSTALL KIT	968400-XX

QTY	UNIT	DESCRIPTION	PART NO.	DESCRIPTION
1	-	-	45	104975-1-XX COLUMN WELDMENT, 103377-21-XX ELEVATED UPPER
1	-	-	44	104938-1-XX DRIVE TUBE, 103777-21-XX UPPER
1	-	-	43	100761-3 PLATE, 4.00" ELEVATED HOLD DOWN
1	-	-	42	104272-21EP MONITOR, 4.00" ELEVATED FOR 103561 & 103377, STL-AB (EP)
-	1	-	41	104972-1-XX COLUMN WELDMENT, 103377-11-XX ELEVATED UPPER
-	1	-	40	104929-1-XX DRIVE TUBE, 103777-11-XX UPPER
1	1	-	39	104939-1 YOKE BODY, 3.00" & 4.00" ELEVATED CONTROL
1	1	-	38	104941-1 DISK, ELEVATED MONITOR YOKE
2	2	-	37	104940-1 BRACKET, ELEVATION YOKE CONTROL
-	1	-	36	100761-2 PLATE, 3.00" ELEVATED HOLD DOWN
1	1	-	35	104935-1 DRIVE TUBE, 103377-11 & -21 LOWER
-	1	-	34	104272-11EP MONITOR, 3.00" ELEVATED FOR 103561 & 103377, STL-AB (EP)
1	1	-	33	104973-1 COUPLING, 3377-11 & 3377-21 COLUMN
1	1	-	32	104930-1 COLUMN WELDMENT, 103377-11 & -21 ELEVATED LOWER
-	-	1	31	103436-1-XX COLUMN WELDMENT, 103377-1-XX ELEVATED UPPER
-	-	1	30	103387-1-XX DRIVE TUBE, 103377-1-XX UPPER
-	-	1	29	103391-1 YOKE BODY, 2.50" ELEVATED CONTROL
-	-	1	28	103296-1 DISK, ELEVATED MONITOR YOKE
-	-	2	27	103398-1 BRACKET, 103377-1 YOKE CABLE CONTROL
1	1	1	26	103295-1 HANDLE, ELEVATED YOKE BRAKE
1	1	1	25	102537-1 LOCK KNOB, 50-20UNF-2A THD
2	2	2	24	102473-125C BOLT, HH, 3/8-16UNC X 1.25L, 18-8
2	2	2	23	101994-4 BEARING, NYLON, .50DX.375IDX.375L
4	4	4	22	100249-11C NUT, NYLOCK, 3/8-16UNC, 18-8
2	2	2	21	102473-150C BOLT, HH, 3/8-16UNC X 1.50L, 18-8
4	4	4	20	102475-150C BOLT, HH, 1/2-13UNC X 1.50L, 18-8
-	-	1	19	100761-1 PLATE, 2.50" ELEVATED HOLD DOWN
2	2	2	18	103109-9C WASHER, LOCK, SPLIT, 5/16" NOM, 18-8
2	2	2	17	102472-50C BOLT, HH, 5/16-18UNC X .50L, 18-8
1	1	1	16	103569-1 HANDLE, ELEVATION CONTROL YOKE
1	1	1	15	100789-5 PIN, QUICK, 25D X 1.75L-18-8
1	1	1	14	102475-200C BOLT, HH, 1/2-13UNC X 2.00L, 18-8
2	2	2	13	101994-5 BEARING, NYLON, .625DX.50IDX.50L
2	2	2	12	100249-15C NUT, NYLOCK, 1/2-13UNC, 18-8
2	2	2	11	103324-2B-XX CABLE, 103377 X XX" STYLE B ELEVATION CONTROL
2	2	2	10	103236-4C J-BOLT, 3/8-16UNC X 6.375LG, SS
4	4	4	9	101715-50C WASHER, FLAT, .515ID X.88OD X.063T, 18-8
2	2	2	8	101715-38C WASHER, FLAT, .390ID X.62OD X.063T, 18-8
4	4	4	7	102980-3C NUT, JAM, 3/8-16UNC, 18-8
2	2	2	6	103390-1 GUIDE, ELEVATED CABLE
1	1	1	5	101809-06 LANYARD, NYLON COATED
-	-	1	4	103381-1 DRIVE TUBE, 103377-1 LOWER
-	-	1	3	104272-1EP MONITOR, 2.50" ELEVATED FOR 103561 & 103377, STL-AB (EP)
-	-	1	2	104973-11 COUPLING, 3377-1 COLUMN
-	-	1	1	103386-1 COLUMN WELDMENT, 103377-1 ELEVATED LOWER
-21-XX/QTY.	-11-XX/QTY.	-1-XX/QTY.	ITEM NO.	PART NUMBER DESCRIPTION

UNLESS OTHERWISE SPECIFIED: DIMENSIONS ARE IN INCHES TOLERANCES DECIMALS ANGULAR .XX ±.03 ±2° .XXX ±.010

DO NOT SCALE DRAWING TREATMENT SEE NOTES FINISH SEE NOTES

SIZE SUPP.# D N/A

DATE 01/25/07 PREVIOUS DRAWING DATE 04/08/74 SCALE NTS SHEET 1 OF 1

STANG INDUSTRIAL PRODUCTS
 1250 RAILROAD ST.
 CORONA, CA 92882

MONITOR, ELEVATED, FREESTANDING 23'-42'

PIN **103377** MATL.

CAGE# 55822 DRAWN EK CHECK AB REVISION AB

The information and design disclosed herein is the property of Stang Industries Inc. All proprietary use and sales rights thereto are reserved. This disclosure is confidential and must not be copied in whole or part.