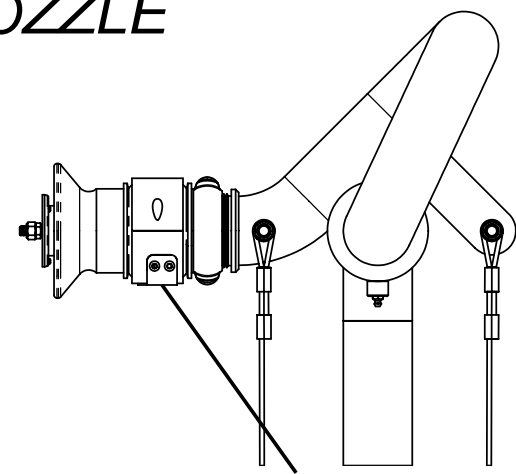


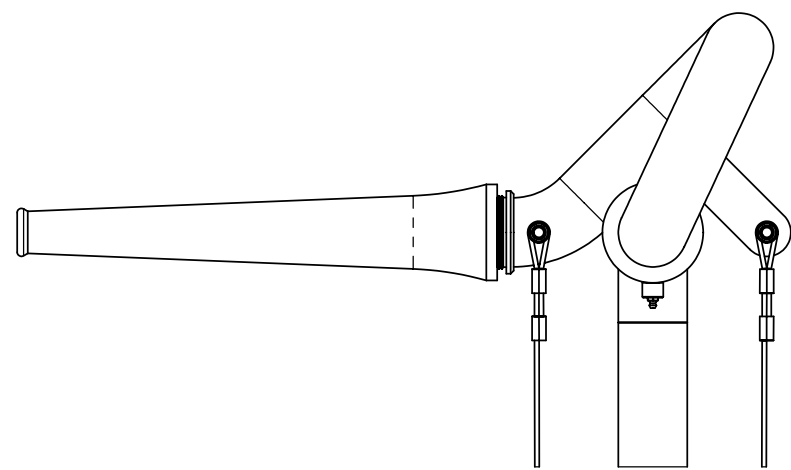
- NOTES:
- DO NOT SCALE THIS DRAWING.
 - BREAK ALL SHARP EDGES.
 - ALL DIMENSIONS DISPLAYED IN PARENTHESES ARE FOR REFERENCE ONLY.
 - MONITOR IS EPOXY COATED RED.
 - INTERCONNECTING PIPE, YOKE & HANDLES ARE GALVANIZED.
 - SEE O&M MANUAL FOR INSTALLATION & OPERATION.
 - LAST DASH NUMBER OF PART NUMBER "XX" IS THE HEIGHT IN FEET, AS SHOWN IN DRAWING.
 - ALL "XX" DASH NUMBER SUFFIXS IN THE BOM MUST MATCH THE DASH NUMBER SUFFIX OF THE ELEVATED MONITOR.
 - 2.50" NH THREADS ON OUTLET.
 - USE PROPER TORQUE ON ALL HARDWARE.
 - USE ANTI-SEIZE LUBRICANT ON ALL SS TO SS HARDWARE CONNECTIONS.
 - USE THREAD SEALANT AT MONITOR TO INTERCONNECTING PIPE CONNECTION.
 - CONSULT STANG FOR VARIOUS INTERCONNECTING PIPE DASH NUMBERS THAT MAY BE REQUIRED.

REVISIONS			
LTR	REVISION	DATE	BY
A-Z	SEE PREVIOUS DRAWINGS	N/A	N/A
AA	MAJOR REVISION TO DRAWING; FIXED BOM	3/28/2007	EK

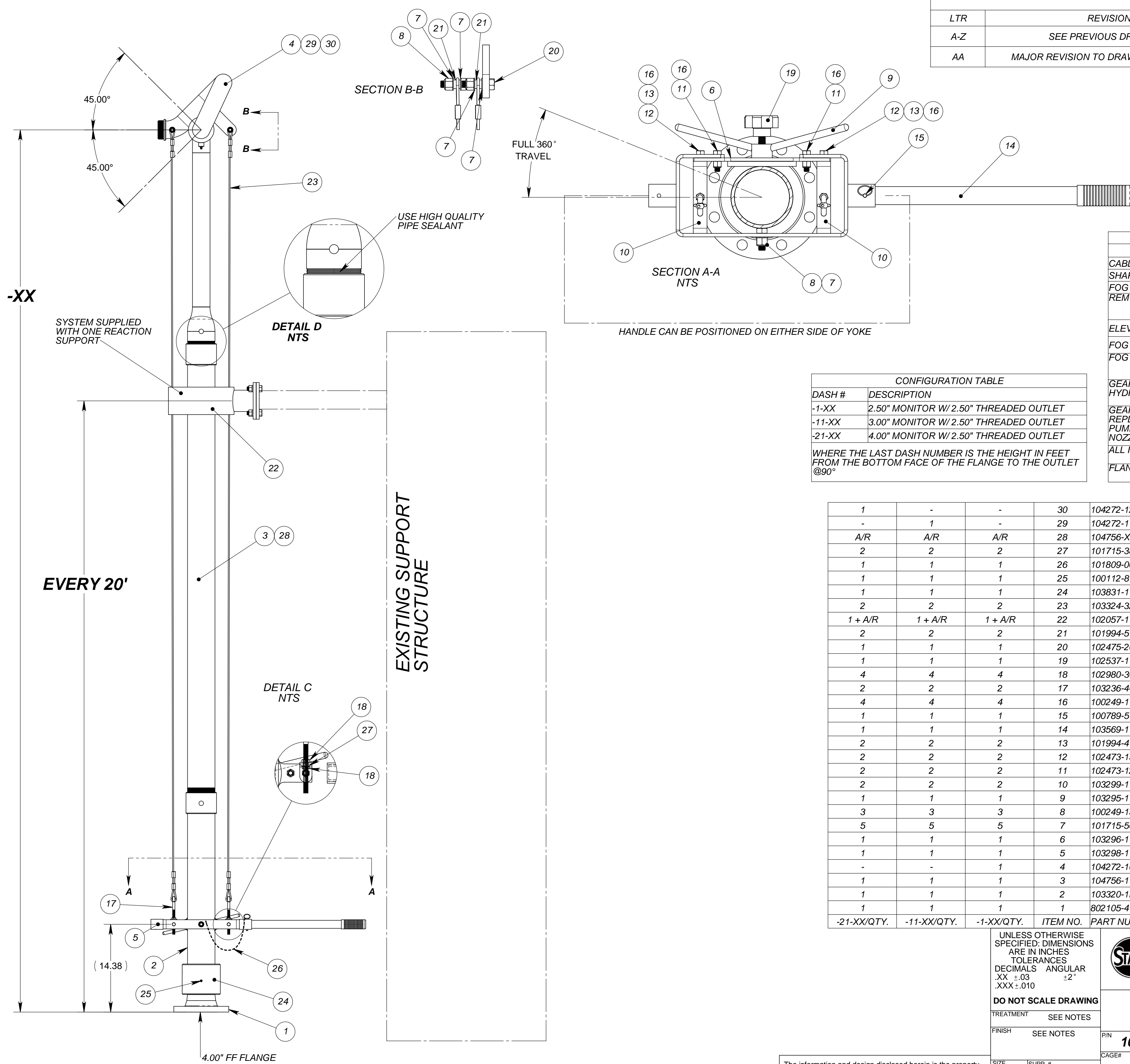
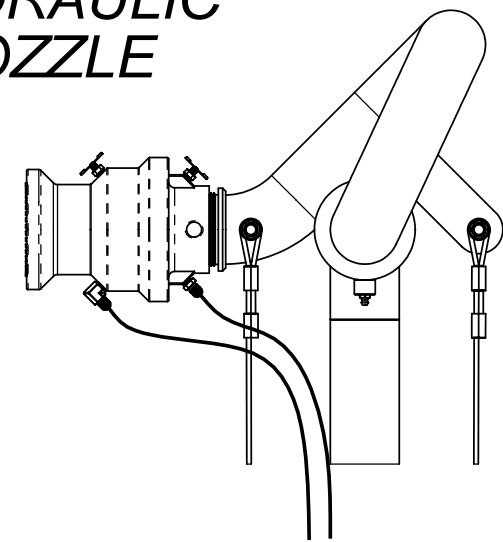
WITH CABLE OPERATED FOG NOZZLE



WITH SHAPER TIP NOZZLE



WITH HYDRAULIC FOG NOZZLE



CONFIGURATION TABLE	
DASH #	DESCRIPTION
-1-XX	2.50" MONITOR W/ 2.50" THREADED OUTLET
-11-XX	3.00" MONITOR W/ 2.50" THREADED OUTLET
-21-XX	4.00" MONITOR W/ 2.50" THREADED OUTLET

WHERE THE LAST DASH NUMBER IS THE HEIGHT IN FEET FROM THE BOTTOM FACE OF THE FLANGE TO THE OUTLET @90°

COMMON OPTIONS ADDITIONS	
DESCRIPTION	PART # SERIES
CABLE OPERATED FOG NOZZLE	104767-XX
SHAPER TIP	100228-XX
FOG NOZZLE	100498-XX
REMOTE SWIVEL GREASE KIT	103874
	• -1-XX (FOR ALL)
ELEVATION CONTROL CABLE KIT	103132-3A-XX
FOG NOZZLE CABLE/ HANDLE KIT	104825-1-XX
FOG NOZZLE CABLE BRACKET KIT	104833-X
	• -31 (FOR ALL)
GEAR PUMP INSTALL KIT (FOR HYDRAULIC FOG NOZZLE)	887700
	• -6-XX (FOR ALL)
GEAR PUMP RETRO-FIT KIT (TO REPLACE OLD EXISTING HAND PUMP FOR HYDRAULIC FOG NOZZLE)	887700
	• -11B (FOR ALL)
ALL INTAKE BASES	103461-XX
FLANGE INSTALL KIT	968400-XX

ITEM NO.	PART NUMBER	DESCRIPTION
1	-	-
-	1	-
A/R	A/R	A/R
2	2	2
1	1	1
1	1	1
1	1	1
2	2	2
1 + A/R	1 + A/R	1 + A/R
2	2	2
1	1	1
1	1	1
4	4	4
2	2	2
4	4	4
1	1	1
1	1	1
2	2	2
2	2	2
2	2	2
1	1	1
3	3	3
5	5	5
1	1	1
1	1	1
-	-	-
1	1	1
1	1	1
1	1	1
1	1	1
-21-XX/QTY.	-11-XX/QTY.	-1-XX/QTY.

UNLESS OTHERWISE SPECIFIED: DIMENSIONS ARE IN INCHES
TOLERANCES
DECIMALS ANGULAR
.XX ±.03 ±2°
.XXX ±.010

DO NOT SCALE DRAWING
TREATMENT SEE NOTES
FINISH SEE NOTES

STANG INDUSTRIAL PRODUCTS
1250 RAILROAD ST.
CORONA, CA 92882

MONITOR, ELEVATED, SUPPORTED UP TO 111'

STANG

PIN 102999
CAGE# 55822
DATE 03/28/07
DRAWN EK
DESIGN
CHECK
SCALE NTS
REVISION AA
SHEET 1 OF 1

The information and design disclosed herein is the property of Stang Industries Inc. All proprietary use and sales rights thereto are reserved. This disclosure is confidential and must not be copied in whole or part.