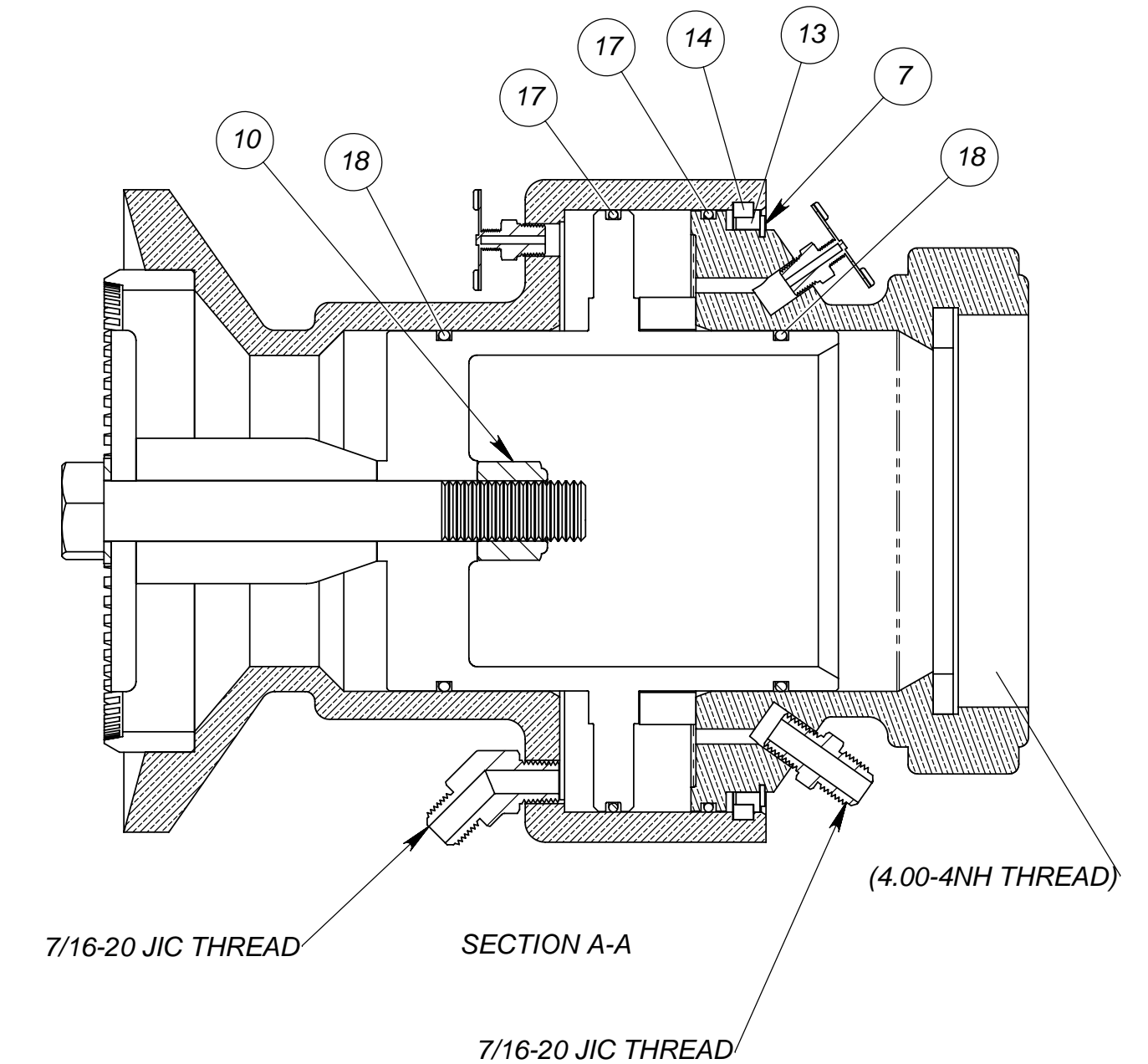
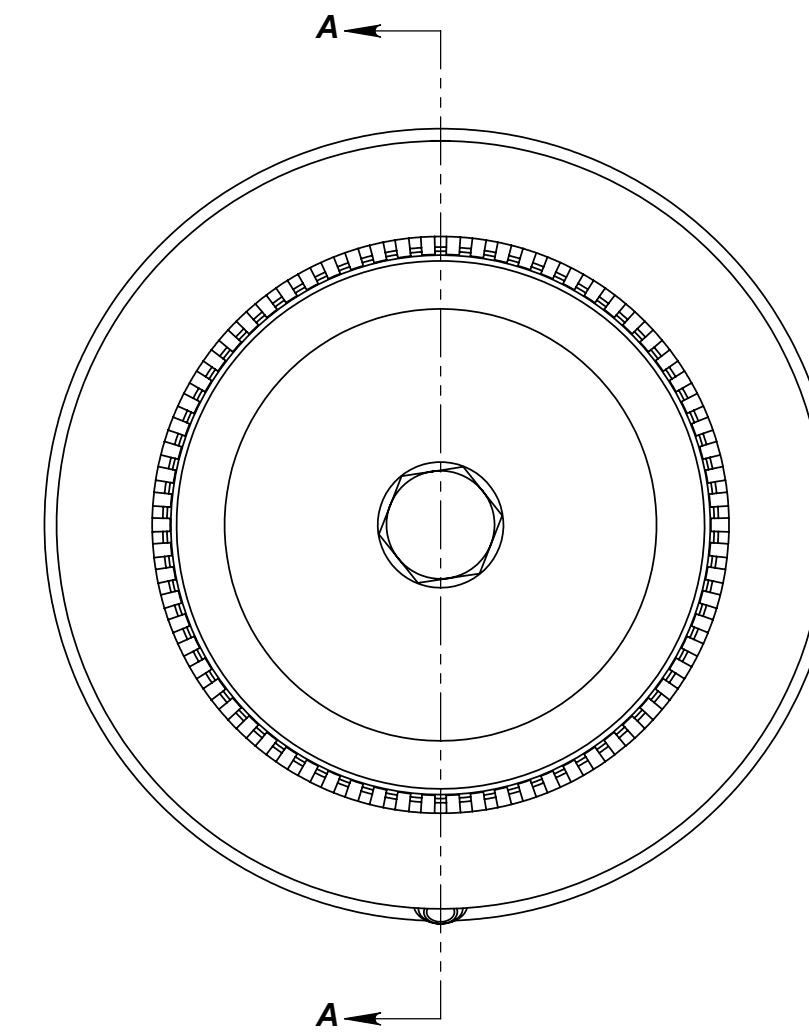
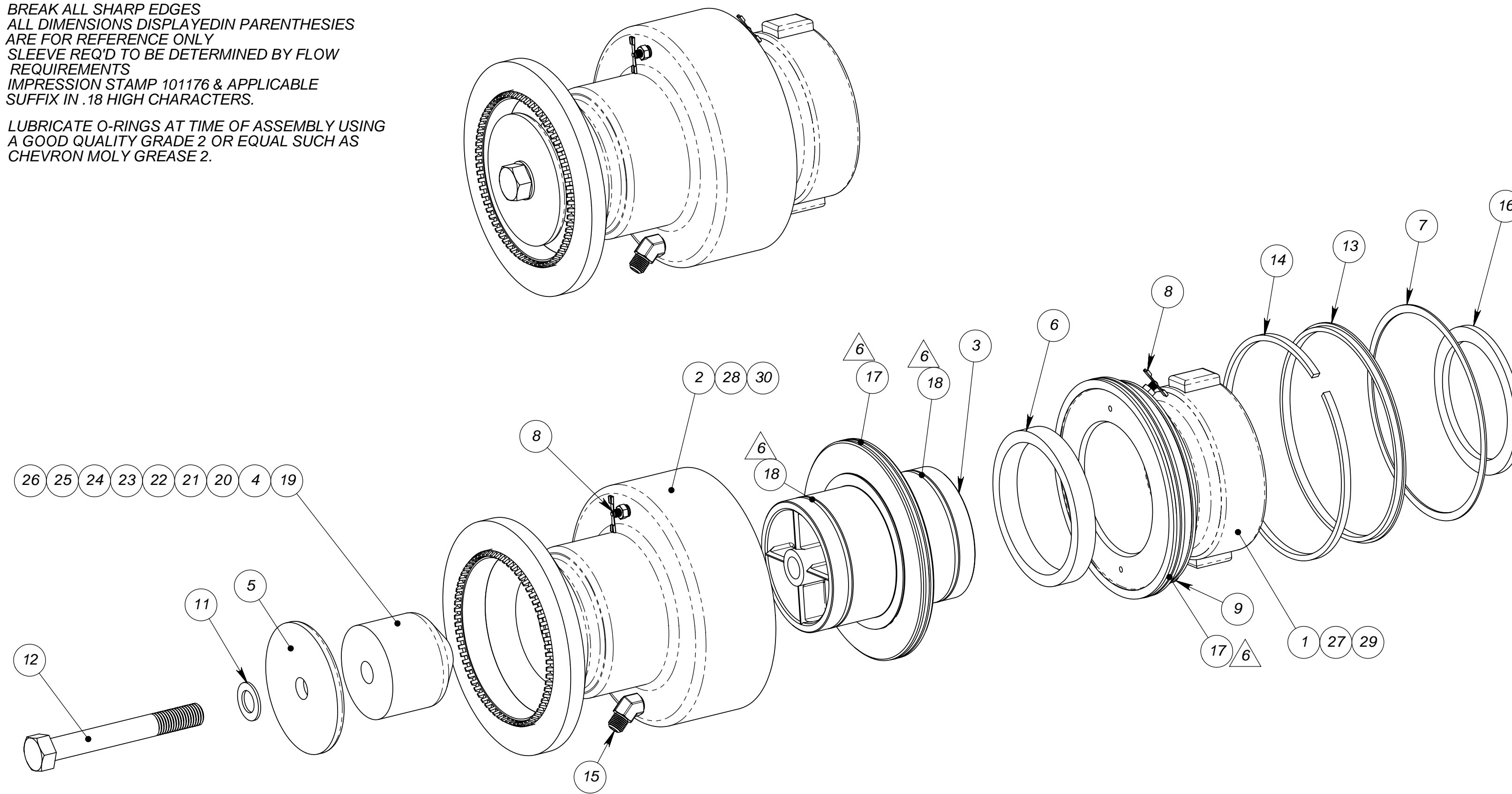


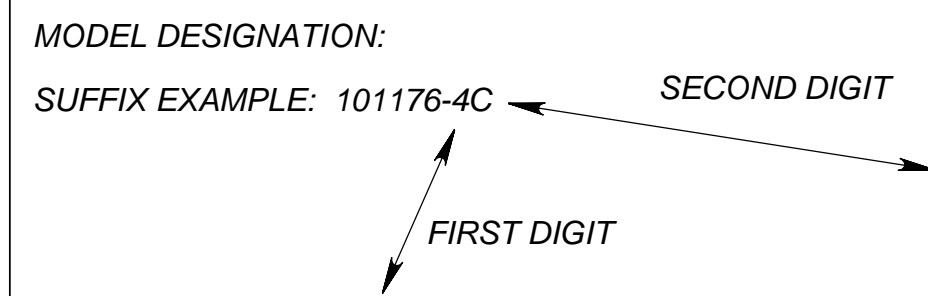
- NOTES:
 1. DO NOT SCALE THIS DRAWING
 2. BREAK ALL SHARP EDGES
 3. ALL DIMENSIONS DISPLAYED IN PARENTHESES ARE FOR REFERENCE ONLY
 4. SLEEVE REQ'D TO BE DETERMINED BY FLOW REQUIREMENTS
 5. IMPRESSION STAMP 101176 & APPLICABLE SUFFIX IN .18 HIGH CHARACTERS.

6. LUBRICATE O-RINGS AT TIME OF ASSEMBLY USING A GOOD QUALITY GRADE 2 OR EQUAL SUCH AS CHEVRON MOLY GREASE 2.



| REVISIONS | | | |
|-----------|-------------------------------------|-----------|----|
| LTR | REVISION | DATE | BY |
| AB | FOR REVISIONS SEE PREVIOUS DRAWINGS | 10/16/00 | EK |
| AC | COMPLETELY REDRAWN & REVISED | 4/26/2006 | EK |

| 4L | 4K | 4J | 4H | 4G | 4F | 4E | 4C | 4A | 3L | 3K | 3J | 3H | 3G | 3F | 3E | 3C | 3A | 2L | 2K | 2J | 2H | 2G | 2F | 2E | 2C | 2A | ITEM NO. | PART # | DESCRIPTION |
|----|----|----|----|----|----|----|----|----|----|----|----|----|----|----|----|----|----|----|----|----|----|----|----|----|----|----|----------|-------------|---|
| - | - | - | - | - | - | - | - | - | 1 | 1 | 1 | 1 | 1 | 1 | 1 | 1 | 1 | - | - | - | - | - | - | - | - | - | 30 | 101672-5 | BODY, 4.00" HYD. FOG NOZZLE CHROMED-BRONZE |
| - | - | - | - | - | - | - | - | - | 1 | 1 | 1 | 1 | 1 | 1 | 1 | 1 | 1 | - | - | - | - | - | - | - | - | - | 29 | 101663-3 | INLET, 4.00" HYD. FOG NOZZLE CHROMED-BRONZE |
| - | - | - | - | - | - | - | - | - | - | - | - | - | - | - | - | - | - | 1 | 1 | 1 | 1 | 1 | 1 | 1 | 1 | 1 | 28 | 101672-4 | BODY, 4.00" HYD. FOG NOZZLE POLISHED-BRONZE |
| - | - | - | - | - | - | - | - | - | - | - | - | - | - | - | - | - | - | 1 | 1 | 1 | 1 | 1 | 1 | 1 | 1 | 1 | 27 | 101663-2 | INLET, 4.00" HYD. FOG NOZZLE POLISHED-BRONZE |
| 1 | - | - | - | - | - | - | - | - | 1 | - | - | - | - | - | - | - | - | 1 | - | - | - | - | - | - | - | - | 26 | 101673-1 | SLEEVE, FLOW, 3000 GPM @100PSI |
| - | 1 | - | - | - | - | - | - | - | 1 | - | - | - | - | - | - | - | - | - | 1 | - | - | - | - | - | - | - | 25 | 101673-2 | SLEEVE, FLOW, 2750 GPM @100PSI |
| - | - | 1 | - | - | - | - | - | - | - | 1 | - | - | - | - | - | - | - | - | - | 1 | - | - | - | - | - | - | 24 | 101673-3 | SLEEVE, FLOW, 2500 GPM @100PSI |
| - | - | - | 1 | - | - | - | - | - | - | - | 1 | - | - | - | - | - | - | - | - | - | 1 | - | - | - | - | - | 23 | 101673-4 | SLEEVE, FLOW, 2250 GPM @100PSI |
| - | - | - | - | 1 | - | - | - | - | - | - | - | 1 | - | - | - | - | - | - | - | - | - | 1 | - | - | - | - | 22 | 101673-5 | SLEEVE, FLOW, 2000 GPM @100PSI |
| - | - | - | - | - | 1 | - | - | - | - | - | - | - | 1 | - | - | - | - | - | - | - | - | - | 1 | - | - | - | 21 | 101673-6 | SLEEVE, FLOW, 1750 GPM @100PSI |
| - | - | - | - | - | - | 1 | - | - | - | - | - | - | - | 1 | - | - | - | - | - | - | - | - | - | 1 | - | - | 20 | 101673-7 | SLEEVE, FLOW, 1500 GPM @100PSI |
| - | - | - | - | - | - | - | 1 | - | - | - | - | - | - | - | 1 | - | - | - | - | - | - | - | - | - | - | 1 | 19 | 101673-9 | SLEEVE, FLOW, 1200 GPM @100PSI |
| 2 | 2 | 2 | 2 | 2 | 2 | 2 | 2 | 2 | 2 | 2 | 2 | 2 | 2 | 2 | 2 | 2 | 2 | 2 | 2 | 2 | 2 | 2 | 2 | 2 | 2 | 2 | 18 | 100128-244 | O-RING, AS568A-244, 4.250ID X .139Cs, BUNA-N |
| 2 | 2 | 2 | 2 | 2 | 2 | 2 | 2 | 2 | 2 | 2 | 2 | 2 | 2 | 2 | 2 | 2 | 2 | 2 | 2 | 2 | 2 | 2 | 2 | 2 | 2 | 2 | 17 | 100128-263 | O-RING, AS568A-263, 7.250ID X .139Cs, BUNA-N |
| 1 | 1 | 1 | 1 | 1 | 1 | 1 | 1 | 1 | 1 | 1 | 1 | 1 | 1 | 1 | 1 | 1 | 1 | 1 | 1 | 1 | 1 | 1 | 1 | 1 | 1 | 1 | 16 | 100275-10 | GASKET, 4.0" NOM., NEOP A60-70,MFN G22 |
| 1 | 1 | 1 | 1 | 1 | 1 | 1 | 1 | 1 | 1 | 1 | 1 | 1 | 1 | 1 | 1 | 1 | 1 | 1 | 1 | 1 | 1 | 1 | 1 | 1 | 1 | 1 | 15 | 101746-2 | FITTING, 45°, 1/4-18(M)NPT - 7/16-20JIC(M) BRASS |
| 1 | 1 | 1 | 1 | 1 | 1 | 1 | 1 | 1 | 1 | 1 | 1 | 1 | 1 | 1 | 1 | 1 | 1 | 1 | 1 | 1 | 1 | 1 | 1 | 1 | 1 | 1 | 14 | 104292-1 | RING, RETAINING, .188SQ 4.00" FOG NOZZLE |
| 1 | 1 | 1 | 1 | 1 | 1 | 1 | 1 | 1 | 1 | 1 | 1 | 1 | 1 | 1 | 1 | 1 | 1 | 1 | 1 | 1 | 1 | 1 | 1 | 1 | 1 | 1 | 13 | 104291-1 | RING, KEEPER/RETAINER, 4.00" FOG NOZZLE |
| 1 | 1 | 1 | 1 | 1 | 1 | 1 | 1 | 1 | 1 | 1 | 1 | 1 | 1 | 1 | 1 | 1 | 1 | 1 | 1 | 1 | 1 | 1 | 1 | 1 | 1 | 1 | 12 | 102478-600C | BOLT, HH, 3/4-10UNC X 6.00L, 18-8 |
| 1 | 1 | 1 | 1 | 1 | 1 | 1 | 1 | 1 | 1 | 1 | 1 | 1 | 1 | 1 | 1 | 1 | 1 | 1 | 1 | 1 | 1 | 1 | 1 | 1 | 1 | 1 | 11 | 101715-75C | WASHER, FLAT, .765ID X1.310D X.063T, 18-8 |
| 1 | 1 | 1 | 1 | 1 | 1 | 1 | 1 | 1 | 1 | 1 | 1 | 1 | 1 | 1 | 1 | 1 | 1 | 1 | 1 | 1 | 1 | 1 | 1 | 1 | 1 | 1 | 10 | 100249-13C | NUT, NYLOCK, 3/4-10UNC, 18-8 |
| 1 | 1 | 1 | 1 | 1 | 1 | 1 | 1 | 1 | 1 | 1 | 1 | 1 | 1 | 1 | 1 | 1 | 1 | 1 | 1 | 1 | 1 | 1 | 1 | 1 | 1 | 1 | 9 | 101816-7 | FITTING, STR, 1/4-18(M)NPT - 7/16-20JIC(M) BRASS |
| 2 | 2 | 2 | 2 | 2 | 2 | 2 | 2 | 2 | 2 | 2 | 2 | 2 | 2 | 2 | 2 | 2 | 2 | 2 | 2 | 2 | 2 | 2 | 2 | 2 | 2 | 2 | 8 | 100235-4 | VALVE, PETCOCK, .125-27NPT, MFN, #135 |
| 1 | 1 | 1 | 1 | 1 | 1 | 1 | 1 | 1 | 1 | 1 | 1 | 1 | 1 | 1 | 1 | 1 | 1 | 1 | 1 | 1 | 1 | 1 | 1 | 1 | 1 | 1 | 7 | 100452-8 | RING, INT. RETAINING, 7.00 DIA SPIROLOX, SS |
| 1 | 1 | 1 | 1 | 1 | 1 | 1 | 1 | 1 | 1 | 1 | 1 | 1 | 1 | 1 | 1 | 1 | 1 | 1 | 1 | 1 | 1 | 1 | 1 | 1 | 1 | 1 | 6 | 103201-4 | SPACER, FOG NOZZLE SHIM, 5.320D X 4.52ID X .70L-STL |
| 1 | 1 | 1 | 1 | 1 | 1 | 1 | 1 | 1 | 1 | 1 | 1 | 1 | 1 | 1 | 1 | 1 | 1 | 1 | 1 | 1 | 1 | 1 | 1 | 1 | 1 | 1 | 5 | 101670-1 | POPPET, NSO, 4.00" FOG NOZZLE |
| - | - | - | - | - | - | - | - | - | 1 | - | - | - | - | - | - | - | - | - | - | - | - | - | - | - | - | - | 4 | 101673-11 | SLEEVE, FLOW, 1000 GPM @100PSI |
| 1 | 1 | 1 | 1 | 1 | 1 | 1 | 1 | 1 | 1 | 1 | 1 | 1 | 1 | 1 | 1 | 1 | 1 | 1 | 1 | 1 | 1 | 1 | 1 | 1 | 1 | 1 | 3 | 101664-2 | PISTON, 4.00" FOG NOZZLE-BRONZE |
| 1 | 1 | 1 | 1 | 1 | 1 | 1 | 1 | 1 | 1 | 1 | 1 | 1 | 1 | 1 | 1 | 1 | 1 | 1 | 1 | 1 | 1 | 1 | 1 | 1 | 1 | 1 | 2 | 101672-6 | BODY, 4.00" HYD. FOG NOZZLE AS CAST-BRONZE |
| 1 | 1 | 1 | 1 | 1 | 1 | 1 | 1 | 1 | 1 | 1 | 1 | 1 | 1 | 1 | 1 | 1 | 1 | 1 | 1 | 1 | 1 | 1 | 1 | 1 | 1 | 1 | 1 | 101663-4 | INLET, 4.00" HYD. FOG NOZZLE AS CAST-BRONZE |



| FIRST DIGIT OF MODEL SUFFIX | NOMINAL FLOW RATE @100PSI |
|-----------------------------|---------------------------|
| -XL | 3000GPM |
| -XK | 2750GPM |
| -XJ | 2500GPM |
| -XH | 2250GPM |
| -XG | 2000GPM |
| -XF | 1750GPM |
| -XE | 1500GPM |
| -XC | 1200GPM |
| -XA | 1000GPM |

HYDRAULIC OPERATION:
 • USE OIL SUCH AS SHELL TELLUS PLUS 32
 • HYDRAULIC FLUID REQUIRED FOR FULL STROKE IS 32.913 CUBIC INCHES. .14 GAL/STROKE REFERENCE VOLUME WILL VARY WITH THE ADDITION OF 103201
 • HYDRAULIC OPERATION: RECOMMENDED WORKING PRESSURE-250-400PSI, MAX PRESSURE IS 500PSI

UNLESS OTHERWISE SPECIFIED: DIMENSIONS ARE IN INCHES
 TOLERANCES
 DECIMALS ANGULAR
 .XX ±.03 ±2°
 .XXX ±.010

DO NOT SCALE DRAWING
 TREATMENT SEE NOTES
 FINISH SEE NOTES

STANG INDUSTRIAL PRODUCTS
 1250 RAILROAD ST.
 CORONA, CA 92882

NOZZLE, FOG, 4.00" HYDRAULIC, NSO

P/N **101176**

CAGE# 55822 DRAWN EK CHECK EK REVISION AC
 DATE 04/26/06 DESIGN SCALE NTS SHEET 1 OF 1

The information and design disclosed herein is the property of Stang Industries Inc. All proprietary use and sales rights thereto are reserved. This disclosure is confidential and must not be copied in whole or part.