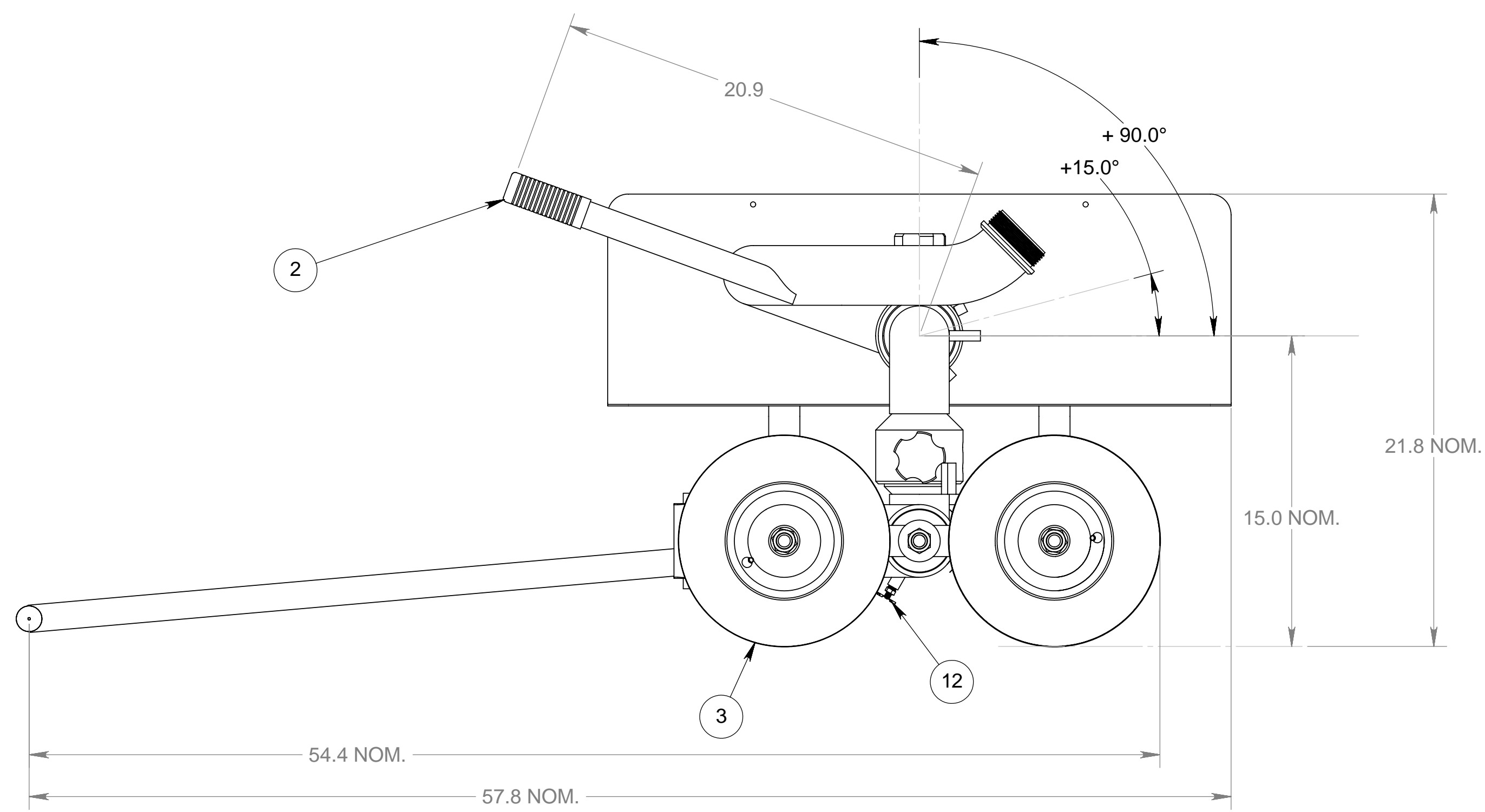
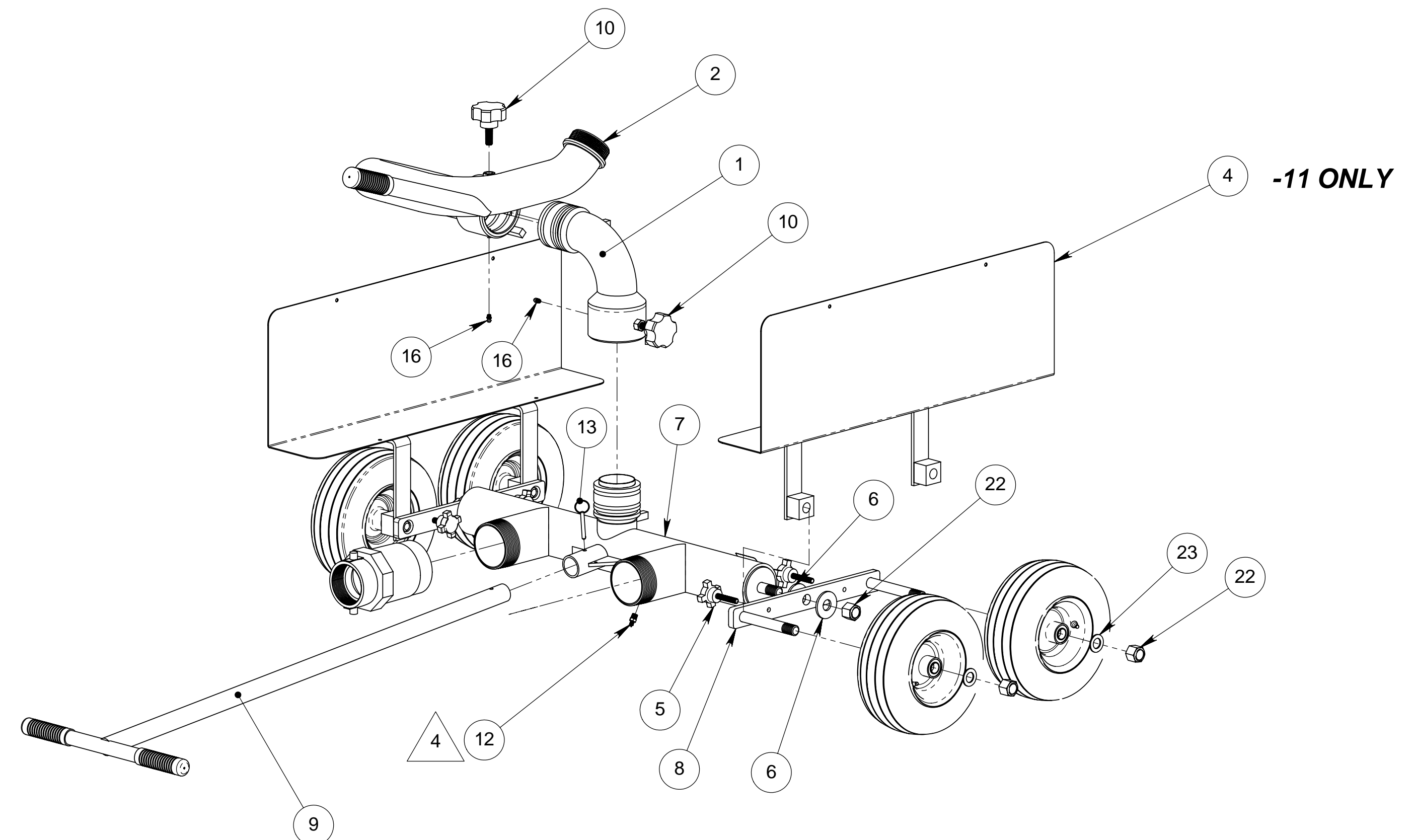
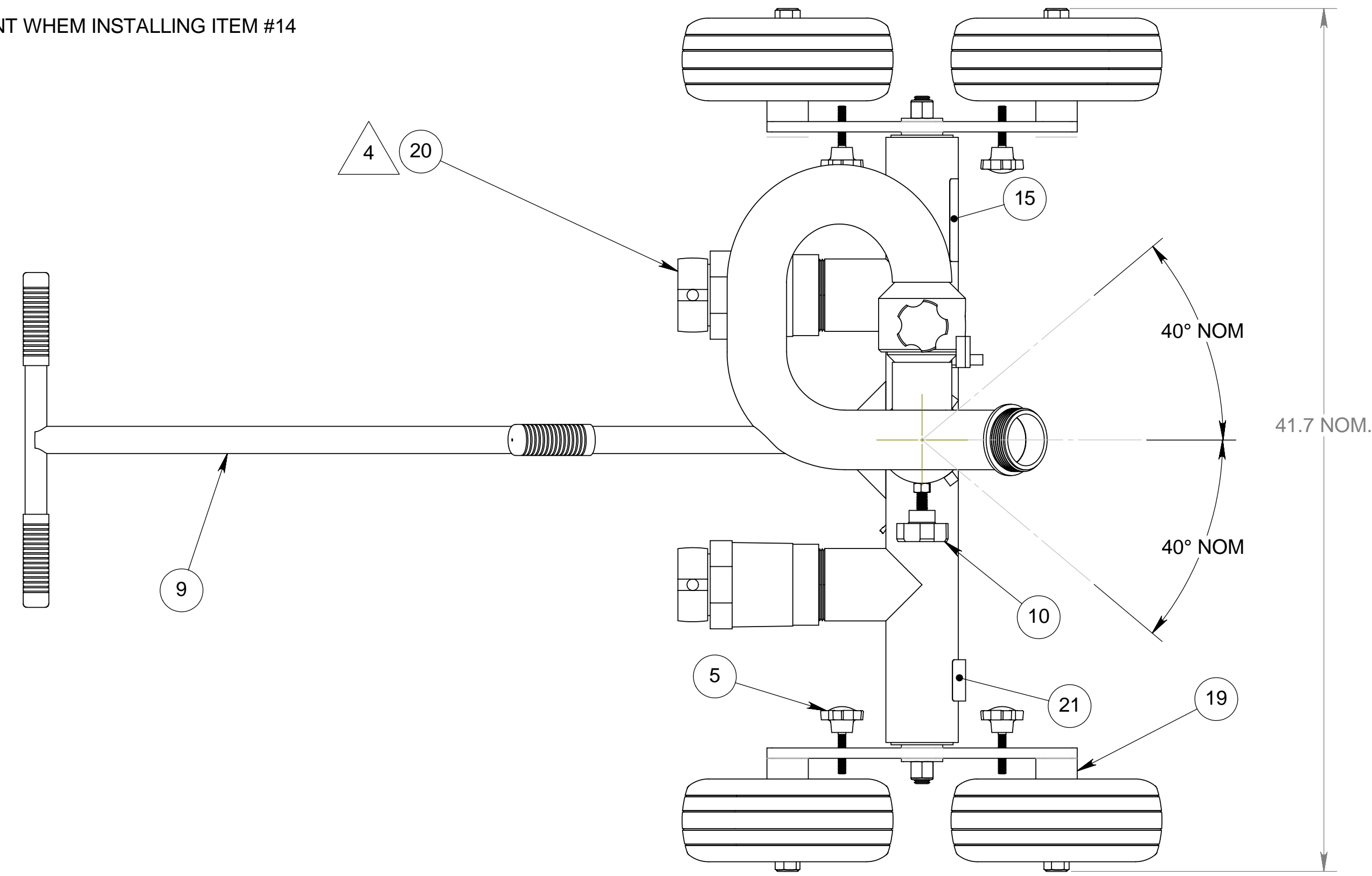


NOTES:
 1) DO NOT SCALE THIS DRAWING
 2) BREAK ALL SHARP EDGES
 3) ALL DIMENSIONS DISPLAYED IN PARENTHESES ARE FOR REFERENCE ONLY

4 USE PIPE THREAD SEALANT WHEN INSTALLING ITEM #14

| REVISIONS | | | |
|-----------|--|----------|----|
| LTR | REVISION | DATE | BY |
| AH | REVISED AND REDRAWN: ELIMINATED ALL ITEMS CORRESPONDING WITH THE INLET SWIVELS. ADDED ITEM 14; REVISED SW MODELS | 06.03.03 | EK |
| AI | REVISED BOM; ADDED DIMENSIONAL INFO | 2/3/2006 | EK |



| QTY. | ITEM NO. | PART # | DESCRIPTION |
|----------|----------|--------|---|
| 4 | 4 | 23 | 101715-75C WASHER, FLAT, .765ID X1.31OD X.063T, 18-8 |
| 6 | 6 | 22 | 100249-13C NUT, NYLOCK, 3/4-10UNC, 18-8 |
| 1 | 1 | 21 | 100853-1 PLATE, ALUM ID |
| 2 | 2 | 20 | 189450-1 VALVE, ONE-WAY, 2.50NH(F) IN X 3.00NPT(F) OUT, BRASS |
| - | 4 | 19 | 100831-3 SPACER, FIREFLY STL WHEEL |
| 4 | - | 18 | 100795-1 CORD BUNGEE24L W/HOOKS RED |
| 1 | - | 17 | 103782-1 COVER, FIREFLY W/HOSE RACK, PATTERN #1-#16 RED VINYL |
| 2 | 2 | 16 | 100112-8 FITTING, ZERK, STR, 1/4-28UNF, CRES |
| 1 | 1 | 15 | 100751-1 LABEL, INSTRUCTION |
| 2 | 2 | 14 | 103829-1 SWIVEL KIT, 2.5 NOM. |
| 1 | 1 | 13 | 100789-5 PIN, HITCH, .25Dx1.75 SS |
| 1 | 1 | 12 | 100235-4 VALVE, PETCOCK, .125-27NPT, MFN, #135 |
| 1 | 1 | 11 | 100256-8 GRIP,HAND,BLK PLSTC,#RG28055 |
| 2 | 2 | 10 | 102537-1 LOCK KNOB, 50-20UNF-2A THD |
| 1 | 1 | 9 | 100834-1 HANDLE, FIREFLY |
| 2 | 2 | 8 | 100830-1 BOGIE WELDMENT, FIREFLY STL |
| 1 | 1 | 7 | 100829-1 WLDMT, AXLE 2-INLET FIREFLY |
| 4 | 4 | 6 | 101989-75 WASHER, FLAT, 2.0OD X .813ID X .156THK STL |
| 4 | 4 | 5 | 100983-1 LOCK KNOB ASSY |
| 2 | - | 4 | 103106-21 RACK, FIREFLY HOSE |
| 4 | 4 | 3 | 104503-1 WHEEL ASSY, FOAM FILLED |
| 1 | 1 | 2 | 103316-111 ELL, 2.5" UPR FIREFLY STD, STL |
| 1 | 1 | 1 | 101221-6 ELL, LOWER, 2.50" FIREFLY, STL-AB |
| -11/QTY. | -1/QTY. | | ITEM NO. PART # DESCRIPTION |

SOME ITEMS NOT SHOWN FOR CLARITY

The information and design disclosed herein is the property of GST Industries Inc. All proprietary use and sales rights thereto are reserved. This disclosure is confidential and must not be copied in whole or part.

UNLESS OTHERWISE SPECIFIED: DIMENSIONS ARE IN INCHES
 TOLERANCES
 DECIMALS ANGULAR
 .XX ±.03 ±2°
 .XXX ±.010

DO NOT SCALE DRAWING
 FINISH
 STANG RED POWDERCOAT
 ADD "EP" SUFFIX FOR RED EPOXY COAT

STANG INDUSTRIAL PRODUCTS
 1250 RAILROAD ST.
 CORONA, CA 92882

STANG FIREFLY 2.5"

| | | | |
|-----------------|----------|-----------------|--------|
| NEW PART NUMBER | 100880 | OLD PART NUMBER | |
| CAGE# | 55822 | DRAWN | RBS |
| DATE | 06.03.03 | DESIGN | |
| SIZE | D | CHECK | |
| | | REVISION | AI |
| | | SCALE | NTS |
| | | SHEET | 1 OF 2 |